



**The impact of *Staphylococcus aureus* concentration on the development of pulmonary lesions and cytokine expression after intravenous inoculation of pigs**

Sørensen, Karen Elisabeth; Skovgaard, Kerstin; Heegaard, Peter M. H.; Jensen, Henrik Elvang; Nielsen, Ole Lerberg; Leifsson, Páll S.; Olsen, Helle Gerda; Aalbæk, Bent; Kristensen, Annemarie Thuri; Kjelgaard-Hansen, Mads; Wiinberg, Bo; Iburg, Tine Moesgaard

*Published in:*  
Veterinary Pathology

*DOI:*  
[10.1177/0300985812439726](https://doi.org/10.1177/0300985812439726)

*Publication date:*  
2012

*Document version*  
Early version, also known as pre-print

*Citation for published version (APA):*  
Sørensen, K. E., Skovgaard, K., Heegaard, P. M. H., Jensen, H. E., Nielsen, O. L., Leifsson, P. S., ... Iburg, T. M. (2012). The impact of *Staphylococcus aureus* concentration on the development of pulmonary lesions and cytokine expression after intravenous inoculation of pigs. *Veterinary Pathology*, 49(6), 950-962.  
<https://doi.org/10.1177/0300985812439726>

# Veterinary Pathology Online

<http://vet.sagepub.com/>

---

## **The Impact of *Staphylococcus Aureus* Concentration on the Development of Pulmonary Lesions and Cytokine Expression After Intravenous Inoculation of Pigs**

K. E. Soerensen, K. Skovgaard, P. M. H. Heegaard, H. E. Jensen, O. L. Nielsen, P. S. Leifsson, H. G. Olsen, B. Aalbaek, A. T. Kristensen, M. Kjølgaard-Hansen, B. Wiinberg and T. M. Iburg  
*Vet Pathol* 2012 49: 950 originally published online 28 March 2012  
DOI: 10.1177/0300985812439726

The online version of this article can be found at:

<http://vet.sagepub.com/content/49/6/950>

---

Published by:



<http://www.sagepublications.com>

On behalf of:

American College of Veterinary Pathologists, European College of Veterinary Pathologists, & the Japanese College of Veterinary Pathologists.

**Additional services and information for *Veterinary Pathology Online* can be found at:**

**Email Alerts:** <http://vet.sagepub.com/cgi/alerts>

**Subscriptions:** <http://vet.sagepub.com/subscriptions>

**Reprints:** <http://www.sagepub.com/journalsReprints.nav>

**Permissions:** <http://www.sagepub.com/journalsPermissions.nav>

>> [Version of Record](#) - Nov 7, 2012

[OnlineFirst Version of Record](#) - Mar 28, 2012

[What is This?](#)

# The Impact of *Staphylococcus Aureus* Concentration on the Development of Pulmonary Lesions and Cytokine Expression After Intravenous Inoculation of Pigs

Veterinary Pathology  
49(6) 950-962  
© The Author(s) 2012  
Reprints and permission:  
sagepub.com/journalsPermissions.nav  
DOI: 10.1177/0300985812439726  
http://vet.sagepub.com



K. E. Soerensen<sup>1</sup>, K. Skovgaard<sup>2</sup>, P. M. H. Heegaard<sup>2</sup>,  
H. E. Jensen<sup>1</sup>, O. L. Nielsen<sup>1</sup>, P. S. Leifsson<sup>1</sup>, H. G. Olsen<sup>1</sup>,  
B. Aalbaek<sup>1</sup>, A. T. Kristensen<sup>3</sup>, M. Kjelgaard-Hansen<sup>3</sup>,  
B. Wiinberg<sup>3</sup>, and T. M. Iburg<sup>1,4</sup>

## Abstract

Acute respiratory distress syndrome is a common complication in severe sepsis. In pigs, the lungs play an important role in clearing systemic bacterial infections due to pulmonary intravascular macrophages found specifically in pigs. However, this increases the exposure of the porcine lungs to pathogens and potential injury. The authors propose that increasing the concentration of the inoculum without changing the bacterial dose will lead to severe sepsis with pronounced pulmonary lesions. This could potentially create a risk of cytokine spillover to the circulation, leading to an increased systemic response. Eight Danish Landrace pigs, approximately 10 weeks old, were inoculated twice with a low or once with a high concentration of *Staphylococcus aureus*. Three pigs were sham-inoculated. The animals were grouped based on macro- and microscopic lung lesions. The mRNA expression of local pulmonary inflammatory markers was compared to protein levels of systemic inflammatory markers. The most severe pulmonary lesions were observed in animals receiving the high *S. aureus* concentration, indicating that severity of lesions is dependent on inoculum concentration rather than total numbers of bacteria. Furthermore, local mRNA expression of inflammatory cytokines appeared to be dependent on the magnitude and severity of tissue destruction, including the ability to confine the lesions. Increasing mRNA levels of serum amyloid A could be a confident marker of severity of pulmonary lesions. Since no correlation was observed between local and systemic levels of inflammatory cytokines, this finding could indicate an ability of the porcine lung to compartmentalize the local inflammatory response and thus restrict systemic contribution.

## Keywords

bacterial concentration, cytokine, histopathology, lung, RT-qPCR, porcine model, *Staphylococcus aureus*, swine

Sepsis is a major cause of death in intensive care units (ICUs), and an increasing number of cases is caused by the Gram-positive bacterium *Staphylococcus aureus*.<sup>5,34,39</sup> Sepsis is the body's systemic response to the presence of pathogens and is caused by complicated self-reinforcing intrinsic cascade reactions that can further progress into severe sepsis with multiple organ dysfunction and septic shock.<sup>11,33</sup> Organ dysfunction manifested by acute lung injury (ALI) or the more severe form, acute respiratory distress syndrome (ARDS), are common complications.<sup>1,43</sup> The pathogenesis of sepsis is still not fully understood, however pro- and anti-inflammatory cytokines play a major role in both the local and systemic responses. Tumor necrosis factor  $\alpha$  (TNF $\alpha$ ) and interleukin (IL)-1 $\beta$  are important pro-inflammatory cytokines in the systemic response, whereas IL-6, a main initiator of the acute phase protein response, has dual properties, also initiating an anti-inflammatory response together with IL-10.<sup>7</sup> Local production of IL-8 is responsible for neutrophil migration into the

lung tissue<sup>7,24</sup> and plays, in combination with the other cytokines, an important role in regulating the local inflammatory reaction. In a review by Bone it was proposed that exceeding critical concentrations of local cytokines may lead to systemic spillover and an increased systemic inflammatory response.<sup>10</sup>

<sup>1</sup> Department of Veterinary Disease Biology, Faculty of Life Sciences, University of Copenhagen, Denmark

<sup>2</sup> Innate Immunology Group, National Veterinary Institute, Technical University of Denmark, Denmark

<sup>3</sup> Department of Small Animal Clinical Sciences, Faculty of Life Sciences, University of Copenhagen, Denmark

<sup>4</sup> Department of Pathology and Wildlife Disease, National Veterinary Institute, Sweden

## Corresponding Author:

Karen Elisabeth Soerensen, Department of Veterinary Disease Biology, Ridebanevej 3, 1870 Frederiksberg, Denmark  
Email: kes@life.ku.dk

**Table 1.** Experimental Setup: Overview of Animals, Bacterial Concentration in the Inoculums, Time and Numbers of Inoculations, and Time of Euthanasia

	Animal no.	Inoculum ( $10^8$ CFU $\text{kg}^{-1}$ BW)	Time of inoculation	Time of euthanasia <sup>d</sup>
Experiment 1 <sup>a</sup>	LC-1	Low concentration of <i>S. aureus</i> ( $10^8$ CFU/mL, 1 mL $\text{kg}^{-1}$ BW)	0 h and 12 h PI <sup>c</sup>	48 h PI
	LC-2			48 h PI
	LC-3			48 h PI
	LC-4			48 h PI
Experiment 2 <sup>b</sup>	HC-1	High concentration of <i>S. aureus</i> ( $10^9$ CFU/mL, 0.1 mL $\text{kg}^{-1}$ BW)	0 h PI <sup>c</sup>	48 h PI
	HC-2			36 h PI <sup>d</sup>
	HC-3			36 h PI <sup>d</sup>
	HC-4			48 h PI
	HC-5			30 h PI <sup>d</sup>
	HC-6	Sterile saline		48 h PI
	HC-7	Sterile saline		48 h PI

<sup>a</sup>LC, low concentration.

<sup>b</sup>HC, high concentration.

<sup>c</sup>PI, post inoculation.

<sup>d</sup>Due to ethical reasons, one infected animal was euthanized at 30 h PI (HC-5) and two at 36 h PI (HC 2-3).

Such spillover of TNF $\alpha$  from the lung has been shown after damage to the alveolar epithelium.<sup>29,50</sup>

Sepsis can be induced in animal models by intravenous (iv) inoculation using several approaches. Previous studies with lipopolysaccharide (LPS) or bacterial suspensions have tested the effect of bolus, continuous infusion, and increasing dosage.<sup>32,37,38,44</sup> All studies thoroughly describe the dose of the inoculum, namely, the number of bacteria or colony forming units (CFU) given per kg body weight (BW), but information on the volume of the bacterial suspension and thereby the administered bacterial concentration is often sparse. Few have tested the effect of increasing the concentration by decreasing the volume of the suspension, without changing the total number of bacteria administered. Following iv administration of *S. aureus*, pigs are prone to develop sepsis with incipient signs of acute lung injury.<sup>27,32,38</sup> Compared to other animal species, the porcine lung plays an important role in clearing systemic bacterial infections,<sup>15,41</sup> a result of the presence of a high number of pulmonary intravascular macrophages (PIMs).<sup>52</sup> These PIMs are apposed closely to the capillary endothelium where they phagocytise particulate elements such as bacteria in the blood. However, this may also increase the exposure of the porcine lung to pathogens and potential injury.<sup>52</sup> PIMs are not normally found in humans,<sup>35,52</sup> but it is speculated that they can be induced under certain conditions of acute pulmonary inflammation.<sup>17,26,45,48</sup>

In this article, concentration dependent pulmonary lesion after inoculation with either low or high concentration of *S. aureus* in pigs is reported. In addition, the effect of the administered bacterial concentration on the local mRNA cytokine response and the systemic protein concentration of cytokines were compared. We propose that increasing the concentration, without changing the bacterial dosage of the inoculum, would lead to a more severe inflammatory response, mimicking ICU patients with sepsis-induced multiple organ dysfunctions; especially those with deteriorating pulmonary changes. It was examined whether a spillover of pro- and anti-inflammatory

cytokines from the lungs could be the leading cause of an increased systemic response.

## Materials and Methods

Materials from two different experiments (Experiment 1 and Experiment 2) were used in this study. Animals in Experiment 1 were inoculated twice with a low concentration (LC) and animals in Experiment 2 once with a high concentration (HC) of *S. aureus*. All animals were obtained from the same specific pathogen free (SPF) herd, randomly selected based on general appearance and absence of obvious clinical symptoms. The experimental setup is displayed in Table 1. The *S. aureus* strain used (isolate No. S54F9) was originally isolated from a chronic embolic porcine lung abscess.<sup>32</sup> Preparation of the inoculum is described in detail by Nielsen et al.<sup>38</sup> Licences for both experiments were provided by the Danish National Animal Experimentation Board, Ministry of Justice, Denmark (License No. 2008/561-1465), and the animals were treated in accordance with the Council of Europe Convention ETS 123.

### Experiment 1—Inoculation With a Low Concentration of *S. Aureus*

Four female pigs, all clinically healthy SPF crossbreeds (Danish Landrace, Yorkshire, Duroc) with a BW of 20 to 25 kg and an approximately age of 10 weeks, were used. After an acclimatization period of 7 days, 3 pigs (LC 1-3) were inoculated intravenously with a saline suspension of  $10^8$  CFU *S. aureus* pr. mL, administered in a dose of  $10^8$  CFU/kg BW, corresponding to a volume of 1 mL/kg BW. The animals were inoculated twice, at 0 h and again 12 h later, namely, receiving a total of  $2 \times 10^8$  CFU/kg BW. The control pig (LC 4) was sham-inoculated with the same volume of sterile isotonic sodium chloride at identical time points (0 h and 12 h). Inoculation occurred over a period of 2 min. Clinical examinations included temperature measurements and blood

samples performed by venipuncture of the external jugular vein at regular intervals (0, 12, 24, 36, and 48 h post inoculation [PI]). Animals were euthanized at 48 h PI with an intravenous injection of 20% pentobarbital. For further detailed description see Leifsson et al.<sup>32</sup> and Jensen et al.<sup>27</sup>

### Experiment 2—Inoculation With a High Concentration of *S. Aureus*

Seven female clinically healthy SPF crossbreed pigs (Danish Landrace, Yorkshire, Duroc), approximately 10 weeks old with a body weight of 20 to 25 kg, were housed in individual pens for an acclimatization period of 5 to 6 weeks. On arrival all animals were haematologically screened for subclinical infections. When entering the study, the pigs were approximately 15 to 16 weeks old and weighted 33 to 39 kg. Five pigs (HC 1-5) were intravenously inoculated with *S. aureus*. The inoculum was administered in a saline suspension of  $1 \times 10^9$  CFU/mL and was administered intravenously at a dose of  $1 \times 10^8$  CFU/kg BW, corresponding to a volume of 0.1 mL/kg BW. Control animals (HC 6-7) were sham-inoculated with sterile isotonic sodium chloride solution by the same method. Inoculation occurred over a period of 1½ to 2 min. Blood samples were collected from a jugular catheter at regular intervals before (III, II, I, 0 h) and after inoculation (6 h, 12 h, 24 h, 36 h, and 48 h PI). Full clinical examination including temperature measurement was carried out every 6 h PI, and a veterinarian continually supervised the animals for 48 h PI. Analgesia was established with Butorphanol i.m. (0.2-0.3 mg/kg BW) (Torbugesic<sup>®</sup>, Scanvet, Denmark) every 4 h from onset of clinical signs of discomfort or obvious pain. At the termination of the experiment, all animals were sedated and euthanized with an overdose of propofol (Rapinovel<sup>®</sup>, Schering-Plough, Denmark) and exsanguinated by severing the axillary vessels. Due to ethical consideration, 3 infected animals were euthanized prior to expected, 1 at 30 h PI (HC-5) and 2 at 36 h PI (HC 2-3). For further details see Soerensen et al. (unpublished data, 2011).

### Postmortem Examination

The lungs and the corresponding tracheobronchial lymph nodes from all pigs were evaluated postmortem. Lung tissues were sampled for histopathology from both a predefined area of the dorsal margin at the right caudal lobe and from areas with gross lesions. Tissues from lungs and lymph nodes were fixed in formalin, processed routinely, and cut in sections of 3 to 4 µm. Sections were stained with haematoxylin and eosin (HE) for overall evaluation, Masson trichrome for detection of collagen, and phosphotungstic acid haematoxylin (PTAH) for fibrin.<sup>4</sup> Furthermore, sections were immunostained for cytokeratin to identify epithelium,<sup>46</sup> fibrinogen/fibrinogen-fragments D and E,<sup>30</sup> CD-3ε a surface marker to identify T cells,<sup>31</sup> lysozyme to identify macrophages,<sup>20</sup> and intracytoplasmic antigen (L1-antigen) in neutrophils, monocytes, and tissue macrophages.<sup>30</sup> The bacteria, *S. aureus*, was identified in situ as previously described.<sup>28</sup> Immunohistochemical detection of IL-8 was performed with mouse anti sheep IL-8 monoclonal

antibody, clone 8M6 (MCA1660, AbD Serotec, UK). This antibody has previously been reported to show cross-reactivity to swine IL-8 in flow cytometry and Western blot analysis.<sup>40</sup> Briefly, antigen retrieval was done by microwave heating in a buffer containing 0.01 M Tris buffer grade (A1379, Appli-chem, USA) and 0.0005 M EGTA (E3889, Sigma-Aldrich, Denmark) at pH 9.0. This was followed by overnight incubation at 4°C with the primary monoclonal antibody (1µg/ml). Detection was performed using the ultravision LP detection system HRP Polymer (Thermo Fisher Scientific, CA, USA), with the chromogen AEC-red (Thermo Fisher Scientific) and counterstained with Mayer's hematoxylin. Tissue from a severely affected lung (HC-2) were used as positive control and lung tissue from a sham-inoculated animal (HC-7) as negative control, furthermore unspecific binding were excluded by replacement of the primary antibody by an irrelevant monoclonal antibody of identical isotype and concentration (mouse IgG2a negative control, X0943, Dako A/S, Denmark).

Tissue samples were taken for reverse transcription quantitative real-time PCR (RT-qPCR) detection of mRNA levels from the dorsal margin of the left caudal lobe and fixed in an RNA preserving solution (40 mL 0.5 M EDTA, 25 mL 1 M sodium citrate, 700 g ammonium sulfate, 935 mL sterile distilled water, adjustment to pH 5.2 using H<sub>2</sub>SO<sub>4</sub>). The tissue samples were stored for 24 h at 2°C to 8°C and thereafter at -20°C.

**Grouping of lung lesions.** The pigs were divided into five groups (A, B, C, D, and E) based on the macroscopical evaluation of distribution, number of abscesses (none or a few  $\leq 5$ , moderate  $< 25$ , or many  $\geq 25$ ) and presence of necrosis combined with a histopathological evaluation of the severity of the lesions (delineated or nondelineated) and influence on the alveolar tissue (local or extensive) (Table 2).

### Microbiology

Quantitative microbiological examination was performed on heparin stabilized blood (4 mL) from both experiments, as previously described.<sup>38</sup> Lung tissues from the right caudal lobe were sampled aseptically for bacterial re-isolation of *S. aureus*.<sup>27,38</sup>

### Clinical Pathology

**Hematology.** White blood cell (WBC) counts and total neutrophil (PMN) counts were conducted on EDTA stabilized whole blood sampled from both experiments (ADVIA 120 analyzer, Bayer Healthcare Diagnostics, Germany).

**Systemic cytokines and acute phase proteins.** Serum collected from each experiment were evaluated for protein levels of TNFα, IL-1β, and IL-6, according to Nielsen et al.<sup>38</sup> In addition, the anti-inflammatory IL-10 was determined by a sandwich ELISA using mouse anti porcine IL-10 for catching and biotinylated goat anti pig IL-10 for detection following the recommendations of the manufacturer (Duoset ELISA, catalog

**Table 2.** Distribution of Pigs into 5 Groups (A, B, C, D, and E) Based on Gross Lesions and Histopathology

Groups	Animal no.	Inoculation	Pathology	
			Gross lesions	Histopathology
Group A <sup>a</sup>	LC-1 LC-2 LC-3	Low concentration	Few abscesses ( $\leq 5$ ) <sup>c</sup> Atelectasis Acute petechiae	Local to extensive DAD <sup>d</sup> Mild interlobular and alveolar oedema
Group B <sup>b</sup>	HC-3 HC-5	High concentration	Moderate disseminated abscesses ( $\leq 25$ )	Delineated abscess Local DAD <sup>d</sup> Moderate interlobular oedema
Group C <sup>b</sup>	HC-1 HC-4	High concentration	Moderate to many disseminated abscesses ( $\geq 25$ )	Delineated abscess Extensive DAD <sup>d</sup> Moderate interlobular oedema
Group D <sup>b</sup>	HC-2	High concentration	Many disseminated abscesses ( $\geq 25$ ) Necrosis and haemorrhage	Multifocal extensive lesions, no delineation Diffuse acute inflammation Marked interlobular, septal, and alveolar oedema
Group E	LC-4 HC-6 HC-7	Sterile saline	None	Smaller areas of atelectasis

<sup>a</sup>LC, low concentration.

<sup>b</sup>HC, high concentration.

<sup>c</sup>Abscesses were only observed in the lungs of one animal (LC-2) in the low concentration group.

<sup>d</sup>DAD, diffuse alveolar damage characterized by thickening of interalveolar septa by inflammatory cells and oedema.

No. DY693, R&D Systems, UK). A recombinant porcine IL-10 (R&D Systems) standard was included. Development of plates was performed following incubation with peroxidase-coupled streptavidin with a tetramethylbenzidine (TMB) peroxide color substrate (TMB X-tra, catalog No. 4800-T, Kem-En-Tec, Denmark) according to the manufacturer's instructions. All samples were run in duplicates in a dilution of 1:2 with the following detection limits: 0.0468 ng/mL (TNF $\alpha$ ), 0.031 ng/mL (IL-6), 0.25 ng/mL (IL-1 $\beta$ ), and 0.5 ng/mL (IL-10). C-reactive protein (CRP) and haptoglobin (Hp) were analyzed according to previously validated methods.<sup>22,23</sup> Correlation between CRP and Hp was calculated using Spearman correlation (GraphPad Prism version 4.00 for Windows, GraphPad Software, CA, USA).

### Reverse transcription quantitative real-time PCR detection of mRNA expression of inflammatory markers in the lung

Lung tissue from all pigs was analyzed by RT-qPCR for mRNA expression levels of IL-1 $\alpha$ , IL-1 $\beta$ , IL-6, IL-8, TNF $\alpha$ , Transferin (TRF), Hp, and Serum Amyloid A (SAA).

**RNA extraction, cDNA synthesis, and pre-amplification.** RNA stabilized lung tissues were homogenized, and total RNA was extracted using RNeasy Mini kit (Qiagen, Denmark), according to the manufacturer's instructions. Purity of extracted total RNA was assessed and the amount quantified using a Nanodrop ND-1000 spectrophotometer (Saveen and Werner AB, Sweden). RNA integrity was analyzed on an Agilent 2100 Bioanalyzer (Agilent Technologies, Denmark) using the RNA 6000 Nano Kit. Extracted RNA was converted into cDNA by reverse transcription of 500 ng total RNA by QuantiTECT

Reverse Transcription kit (Qiagen), using a mix of random primers and oligo-dT. cDNA was diluted 1:6 in low EDTA TE-buffer (VWR – Bie & Berntsen, Denmark) prior to pre-amplification. TaqMan PreAmp Master Mix (5  $\mu$ L) (Applied Biosystems, Denmark) was mixed with 2.5  $\mu$ L 200 nM pooled primer mix (prepared by combining equal concentration of all primers used in the present study) and 2.5  $\mu$ L diluted cDNA and incubated at 95°C in 10 min followed by 15 cycles of 95°C in 15 sec and 60°C in 4 min. Pre-amplified cDNA was diluted at least 1:4 in low EDTA TE-buffer (VWR – Bie & Berntsen) before quantitative real-time PCR (qPCR). Primers were designed using Primer3 (<http://frodo.wi.mit.edu/>) as described in Skovgaard et al,<sup>46</sup> and synthesized at TAG Copenhagen (Denmark). Primer sequences, amplicon length, and primer PCR efficiency are shown in Table 3.

**qPCR.** qPCR was performed in 48.48 Dynamic Array Integrated Fluidic Circuits (Fluidigm, CA, USA). The following components were used for 48 reactions (sample mix): 3  $\mu$ L ABI TaqMan Gene Expression Master Mix (Applied Biosystems), 0.3  $\mu$ L 20X DNA Binding Dye Sample Loading Reagent (Fluidigm), 0.3  $\mu$ L 20X EvaGreen (Biotium, VWR – Bie & Berntsen), and 0.9  $\mu$ L low EDTA TE Buffer (VWR – Bie & Berntsen). Sample mix (4.5  $\mu$ L) was mixed with 1.5  $\mu$ L pre-amplified cDNA. Primer mix (48 reactions) was prepared using 2.3  $\mu$ L 20  $\mu$ M primer set (Table 3), 2.5  $\mu$ L 2X Assay Loading Reagent (Fluidigm), and 0.2  $\mu$ L low EDTA TE-buffer (VWR – Bie & Berntsen). Sample mix, including cDNA (5  $\mu$ L) and primer mix (5  $\mu$ L), was dispensed into appropriate inlets and loaded into the chip (Fluidic Circuit of the Dynamic array) in the IFC Controller (Fluidigm). The chip was placed in the BioMark real-time PCR instrument (Fluidigm), and the following cycle parameters were used: 2 min at 50°C, 10 min at 95°C, followed by 35 cycles with denaturing



**Table 3.** Primers Used for Quantitative Real-Time PCR (qPCR)

Gene symbol	Gene name	Sequence	Amplicon length	PCR efficiency
GAPDH	Glyceraldehyde-3-phosphate-dehydrogenase	F: ACCCAGAAGACTGTGGATGG R: AAGCAGGGATGATGTTCTGG	79	99%
HP/Hap	Haptoglobin	F: ACAGATGCCACAGATGACAGC R: CGTGCGCAGTTTGTAGTAGG	105	102%
HPRT1	Hypoxanthine-phosphoribosyltransferase I	F: AACTTCATGAGGGTGC R: GCAGCCATGTCAAAT	143	82%
IL1A/IL-1 $\alpha$	Interleukin 1 alpha	F: CCAAAGAGGGACATGGAGAA R: GGGCTTTTGTCTGCTTGAG	123	86%
IL1B/IL-1 $\beta$	Interleukin 1 beta	F: TGGGTTCAATCAGGAGACCT R: CAGCCTCGACATTTCCCTTA	116	98%
IL6/IL-6	Interleukin 6	F: GAAGAGAAGTGAAGCAACAACA R: TTGTGTTGGCATCTTTACTGAGA	99	86%
IL8/IL-8	Interleukin 8	F: TAAAGTGATCAGCAATGCCAAA R: TCAACCCTTGAGTCCTCCAC	96	81%
SAA	Serum Amyloid A	F: CTCAACCTCAAACTCCTGGAA R: CCGTCTCCATCAGGTGGTA	82	98%
TRF	Transferrin	F: CCCCCAGAAGGAAGAGTTTC R: CGGGCTTATCTGAGGTTGA	92	91%

for 15 s at 95°C and annealing/elongation for 1 min at 60°C. Melting curves were generated after each run to confirm a single PCR product (from 60°C to 95°C, increasing 1°C/ 3 s.). Reactions were performed in duplicates (qPCR replicates). Nontemplate controls (NTCs) were included to indicate potential problems with nonspecific amplification or sample contaminations. Data were acquired using the Fluidigm Real-Time PCR Analysis software 3.0.2 (Fluidigm) and exported to GenEx (MultiD, Göteborg, Sweden) for further analysis.

**RT-qPCR data analysis.** Data pre-processing, normalization, relative quantification, and statistics were performed using GenEx5. Data were pre-processed as follows: (1) Data were corrected for PCR efficiency for each primer assay individually; (2) average of technical repeats was calculated before reference gene normalization; (3) hypoxanthine phosphoribosyl-transferase 1 (HPRT1) and glyceraldehyde-3-phosphate dehydrogenase (GAPDH) were found to be the most stably expressed reference genes in the present study using both GeNorm<sup>51</sup> and NormFinder,<sup>2</sup> thus the geometric mean of these two genes was used to normalize all samples in GenEx. For each primer assayed, relative mRNA expression levels for all the samples were calculated relative to the control group. Data was log<sub>2</sub> transformed to approach normal distribution prior to *t*-test. Gene expression was considered to be significant if the *P*-value < .05 and fold change >  $\pm 2.0$ .

## Results

### Evaluation of Lung Pathology

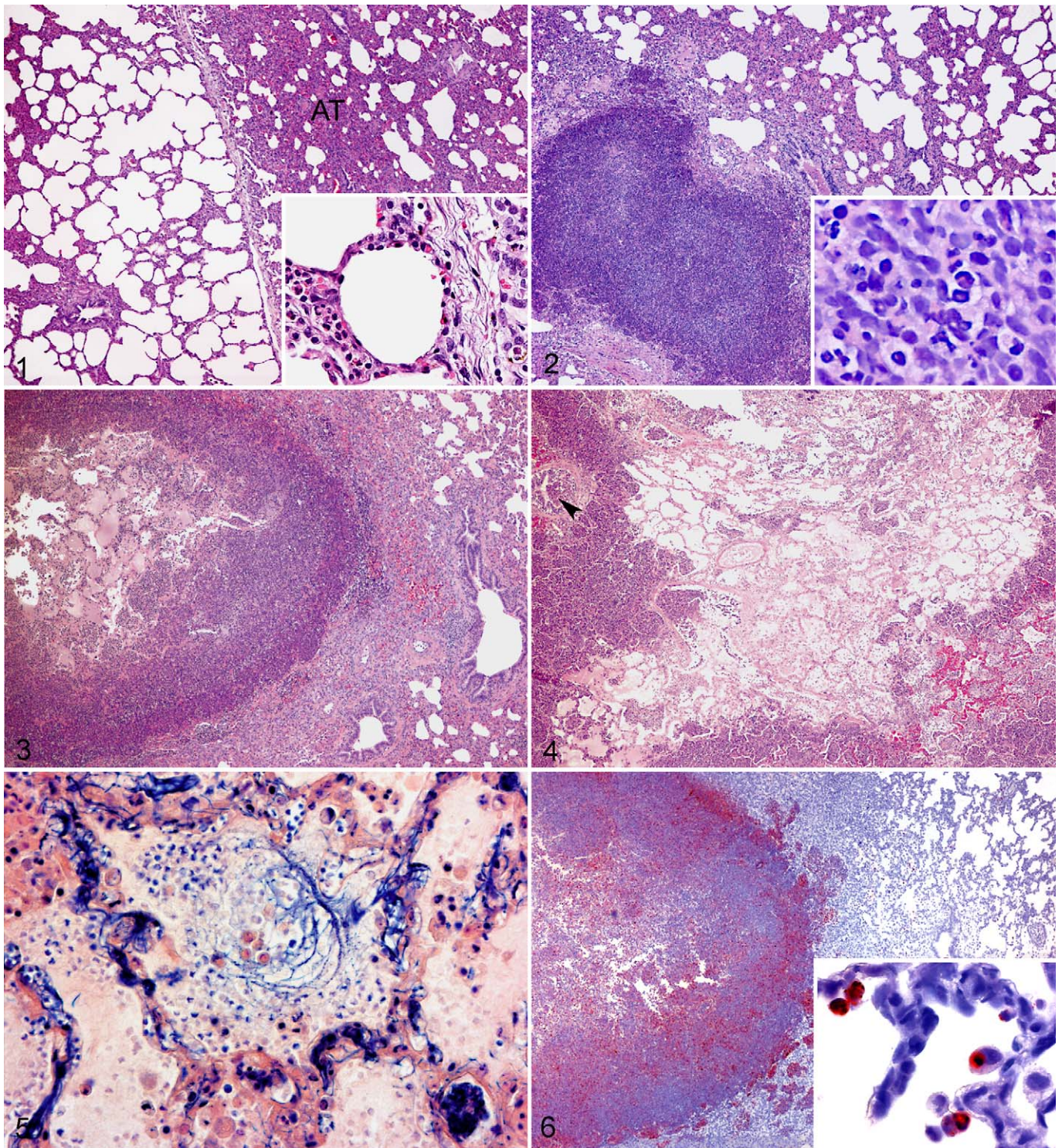
Grouping of animals (A, B, C, D, and E) according to the degree of macro- and microscopical lung lesions is presented in Table 2.

**Group A.** Gross lesions were characterized by areas of atelectasis with acute petechiae. In one animal (LC-2) a few abscesses (2 mm) with hemorrhagic margins were observed in the right cranial lobe. In sections from predefined areas, local to more extensive alveolar affection was observed microscopically, characterized by mild alveolar oedema, an increased number of alveolar macrophages, atelectasis, and thickening of the alveolar septa by mild inflammation and oedema. Mild dilation of capillaries and medium sized vessels with congestions and thrombosis was present. Interlobular oedema and mild dilation of lymph vessels were seen in all animals of the group. Only one abscess was identified microscopically in a section taken from an area with gross lesions (LC-2). All pigs infected with the low concentration of *S. aureus* were included in this group (LC 1-3) (Fig. 1).

**Group B.** A moderate number of bilateral pulmonary disseminated abscesses, some with an acute hemorrhagic margin, were seen macroscopically. In histological sections from predefined areas, abscesses with clear delineation from the surrounding tissue were presented. Thickening of alveolar septa was observed in the local area surrounding the abscesses, along with an increased number of alveolar macrophages. Moderate interlobular oedema with fibrinogen/fibrinogen-fragments and dilation of lymphatic vessels was present. Small amounts of fibrin were found in congested arteries. In HC-5, thrombosis was seen in medium sized vessels at the abscess periphery. In HC-3, lesions were more acute with marked hyperaemia and congestion of capillaries and medium sized blood vessels. Pig HC-3 and HC-5 were included in this group (Fig. 2).

**Group C.** Moderate to many disseminated bilaterally distributed abscesses occasionally associated with necrotic areas were present in the lungs. Microscopical evaluation of sections from





**Figure 1.** Porcine lung; Group A (LC-1). Areas of atelectasis (AT). Haematoxylin and eosin (HE). Insert shows mild thickening of inter-alveolar septa, intra-capillary neutrophil accumulation, and mild interlobular oedema. HE. **Figure 2.** Porcine lung; Group B (HC-5). Clearly delineated abscess with local affection of surrounding inter-alveolar septa. Haematoxylin and eosin (HE). Insert shows mixed inflammatory cells, representing the typical cell population in the periphery of the abscesses. HE. **Figure 3.** Porcine lung; Group C (HC-1). Clearly delineated abscess with central necrosis. Affection of inter-alveolar septa in the whole section. Capillary congestion. Haematoxylin and eosin (HE). **Figure 4.** Porcine lung; Group D (HC-2). Extensive lesions with no clear delineation. Infiltration of inflammatory cells, necrotic cellular debris, and intra-alveolar exudation. There is spread of inflammatory cells to the conducting system (arrowhead). Capillary congestion. Haematoxylin and eosin (HE). **Figure 5.** Porcine lung; Group D (HC-2). Fibrin accumulation in alveoli and alveolar septa. Thrombosis is seen in a small artery in the right corner. Phosphotungstic acid haematoxylin (PTAH). **Figure 6.** Porcine lung; HC group (HC-4). Distribution of IL-8 immunohistochemical staining in abscesses of the HC Group. IL-8 and Mayer's hematoxylin counterstain. Insert shows IL-8 positive cells with macrophage morphology and intracytoplasmic staining. IL-8 and Mayer's hematoxylin counterstain.



predefined areas showed clearly delineated abscesses with surrounding moderate septal inflammation extending to all alveolar septa in the section. Dilatation of lymph vessels and moderate interlobular oedema containing fibrinogen/fibrinogen-fragments and smaller amounts of fibrin were seen. Vascular congestion with a proteinaceous homogeneous appearance, fibrinogen/fibrinogen-fragments, and some fibrin were present. Furthermore, minor areas of alveolar exudation containing erythrocytes, neutrophils, and mononuclear cells were found in one animal (HC-4). Pigs HC-1 and HC-4 were included in this group (Fig. 3).

**Group D.** Disseminated, necrotizing, and hemorrhagic abscesses were seen bilaterally, along with marked oedema and acute fibrinous pleuritis. Microscopically, extensive acute lesions without clear delineation were seen in sections taken from predefined areas. Acute severe suppurative inflammation with necrotic cellular debris and fibrinous exudation was seen in the alveoli with spreading to the conducting system (Fig. 4). Marked interlobular, septal, and alveolar oedema with fibrinogen/fibrinogen-fragments and fibrin exudation was found (Fig. 5). All vessels were congested with accumulation of fibrin, and thrombosis was seen in small and medium sized arteries. Lymphatic vessels were distended with fibrinous material, and severe neutrophilic infiltrations were seen especially in subpleural lymph vessels. Pig HC-2 was included in this group (Fig. 4).

**Group E.** No gross lesions were found. Microscopically, smaller areas of atelectasis were seen in Pigs HC-6 and HC-7. Areas of capillary hyperaemia and mild-interlobular oedema were seen in Pig LC-4. All control animals fell into this group (LC-4, HC 6-7).

Well-delineated abscesses were observed as a prevailing histological lesion in three of the groups; one animal (LC-2) in Group A and all animals in Groups B and C. These abscesses were microscopically characterized by a central area of necrotic tissue and cellular debris surrounded by inflammatory cells. In most abscesses, *S. aureus* was demonstrated centrally. Oat-shaped cells created a darker condensed necrotic edge at the abscess periphery, surrounded by small mononuclear cells (identified as immature macrophages by morphology, positive staining for L1-antigen, and lack of CD-3ε staining) filling the alveolar spaces. All abscesses contained lysozyme positive fragments or cells at the periphery, together with strongly positive IL-8 stained cells, some with a fragmented or a granular appearance (Fig. 6). Fibrinogen/fibrinogen-fragments and fibrin were seen in relation to the periphery of the abscesses. All abscesses were acute with no signs of granulation tissue and located either interlobularly or expanding from the alveolar septa. Increasing numbers of lysozyme positive macrophages, some with IL-8 positive intracytoplasmic granules, were found within the alveolar septa, alveoli, conducting system, and vascular structures in the HC groups (Fig. 6). All infected animals showed a mild increase in T-lymphocyte infiltration, in

association with bronchus-associated lymphoid tissue (BALT) and bordering the abscesses in Groups B and C.

In Pig HC-2 (Group D), increasing amounts of the aforementioned cell types were present with a more extensive distribution pattern, exemplified by a diffuse IL-8 response with spreading of positive cell material to the conducting system. Furthermore, a few positive *S. aureus* clusters were found scattered in the lesions. Increased amounts of L1-antigen positive cells, lysozyme stained macrophages, and T-lymphocytes were found in the conducting system, interlobularly, in lymphatic vessels, and peri- and intravascularly.

### Histopathological Evaluation of the Tracheobronchial Lymph Nodes

Marked neutrophil accumulations were observed in the tracheobronchial lymph nodes of Groups B, C, and D receiving the high *S. aureus* concentration. Neutrophil infiltrations were primarily localized peripheral to trabecular structures and in the subcapsular sinus. Lesions varied from haemorrhage and microabscess formation (HC-5) to diffuse neutrophil infiltration (HC 1-4). Lymph vessels were distended and the tissue oedematous. Fibrin was seen in trabecular and subcapsular sinuses in most pigs. Hemorrhage, severe congestion, and thrombosis in blood and lymphatic vessels were found in one pig (HC-2). In animals receiving the low *S. aureus* concentration (Group A) areas of subcapsular hemorrhage and mild neutrophil infiltration were found. In one animal (LC-1) a macroscopically visible abscess was observed, and in another (HC-1) a large abscess was observed by histology. One animal (LC-3) showed no significant reaction in the lymph nodes. No reactions were seen in the tracheobronchial lymph nodes of the control animals (Group E).

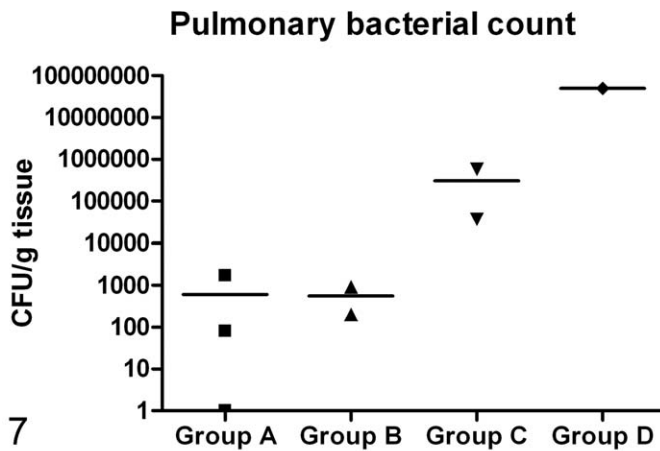
### Microbiology

Pulmonary *S. aureus* counts appeared to increase with the severity of lesions, with the highest bacterial count found in Group D, followed by Group C. Approximately identical mean bacterial counts were seen in Groups A and B (Fig. 7). *S. aureus* was not isolated from any of the control samples (Group E).

### Systemic Inflammatory Markers

A marked rise in body temperature was observed between 6 and 12 h PI in animals from both inoculated groups, and the temperature remained elevated during the rest of the experiment (Fig. 8). Regardless of the bacterial concentration of the inoculum, neutrophilia were present in all infected animals during the first 6 h, peaking at 12 h to 24 h (Fig. 9).

Increasing systemic IL-6 protein concentrations were observed between 6 h and 12 h PI in all infected animals and remained elevated throughout the experimental period (Fig. 10). Serum protein concentrations of CRP and Hp also increased, with CRP increasing earlier than Hp in most infected animals (Figs. 12, 13). A highly positive correlation was seen between CRP and Hp levels ( $P < .0001$ ). Small transient peaks



**Figure 7.** Pulmonary bacterial count of *S. aureus* (CFU/g tissue). Lines show mean values and symbols show the value of the individual pigs assigned to the Groups A, B, C, and D (■, ▲, ▼, ◆). No *S. aureus* were found in the lungs of the control animals (Group E).

of TNF $\alpha$  were observed at 6 h PI (Fig. 11) but only in infected animals from Experiment 2 (HC groups) with blood sampled at 6 h PI. At the end of the study (48 h PI) TNF $\alpha$  protein values of most infected pigs were below values of control animals. Systemic protein levels of IL-1 $\beta$  and IL-10 did not exceed the detection limit.

### Local Pulmonary Inflammatory Markers

Mean relative mRNA expression of selected pro-inflammatory markers in the lungs of animals inoculated with the low or the high concentration of *S. aureus* compared to control animals is presented in Figure 14. mRNA coding for the acute phase protein SAA was found to be significantly up-regulated ( $P = .030$ ) in the HC group compared to the control group. Likewise, the negative acute phase reactant, TRF, was found to be significantly down-regulated ( $P = .022$ ) in the HC group compared to the control group. In general, no significant concentration dependent differences were seen in the pro-inflammatory cytokine levels. However, a tendency towards decreasing levels in the LC group and increasing levels in the HC group were observed for the interleukins. The contribution of the individual five groups (A, B, C, D, and E) to the mean relative mRNA expression levels of the selected pro-inflammatory markers in the lung is shown in Figure 15. A decrease of mRNA coding for the pro-inflammatory cytokines (IL-1 $\alpha$ , IL-1 $\beta$ , IL-6, IL-8, and TNF $\alpha$ ) was found in the lung tissue of most groups, except for Group D/HC-2, in which a 2fold to 8fold increase compared to the control group was seen for all of the aforementioned pro-inflammatory cytokines, except for TNF $\alpha$ . TNF $\alpha$  mRNA expression appeared to be down-regulated in all groups, with the lowest levels observed in the severely affected Group D/HC-2. In complete contrast to this, SAA expression was stepwise increased in all groups, from more than a 2fold increase in Group A to an almost 48fold increase in Group D. An increased

expression of Hp was seen in all infected groups, except in Group D, where a small decrease was seen.

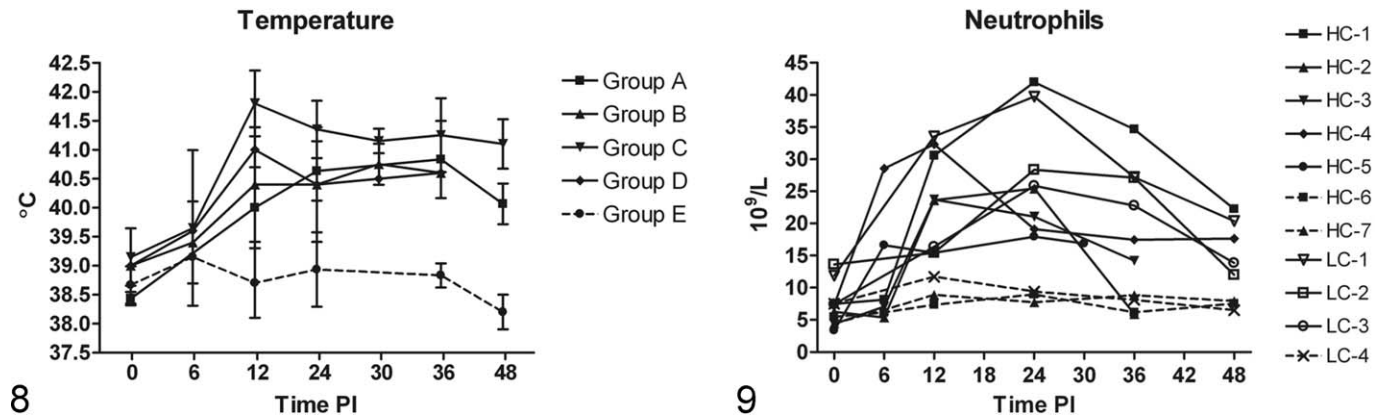
### Discussion

In this study, a bacterial concentration dependent change in pulmonary lesions and local mRNA expression of inflammatory markers was described. By increasing the concentration of *S. aureus* in the inoculum, more severe pulmonary disease with pronounced gross lesions and histological changes developed in the HC groups (Groups B, C, and D) compared to the LC group (Group A), even though animals in Group A (LC group) received the low concentration dose twice and hereby the double amount of *S. aureus*.<sup>27,32</sup> Interestingly, despite this difference in total bacterial numbers, the highest mean bacterial count was found in the lungs of the HC groups with the most pronounced pulmonary lesions (Groups C and D). When comparing pulmonary lesion between the LC (11 weeks) and the HC group (15-16 weeks), the effect of age difference on immune response should be addressed. No definitive studies have been made to determine the age at which the immune system are fully developed in pigs, but key elements of the immune system are suggested to be present soon after birth. However, different studies have assessed aspects of cellular development and immunoglobulin maturity, indicating that immunity develops at 5 to 7 weeks and are fully developed at 7 to 12 week of age.<sup>8,9,18</sup> This validates comparison of pigs in the LC group with a finished or nearly finished immune response to pigs of the HC group.

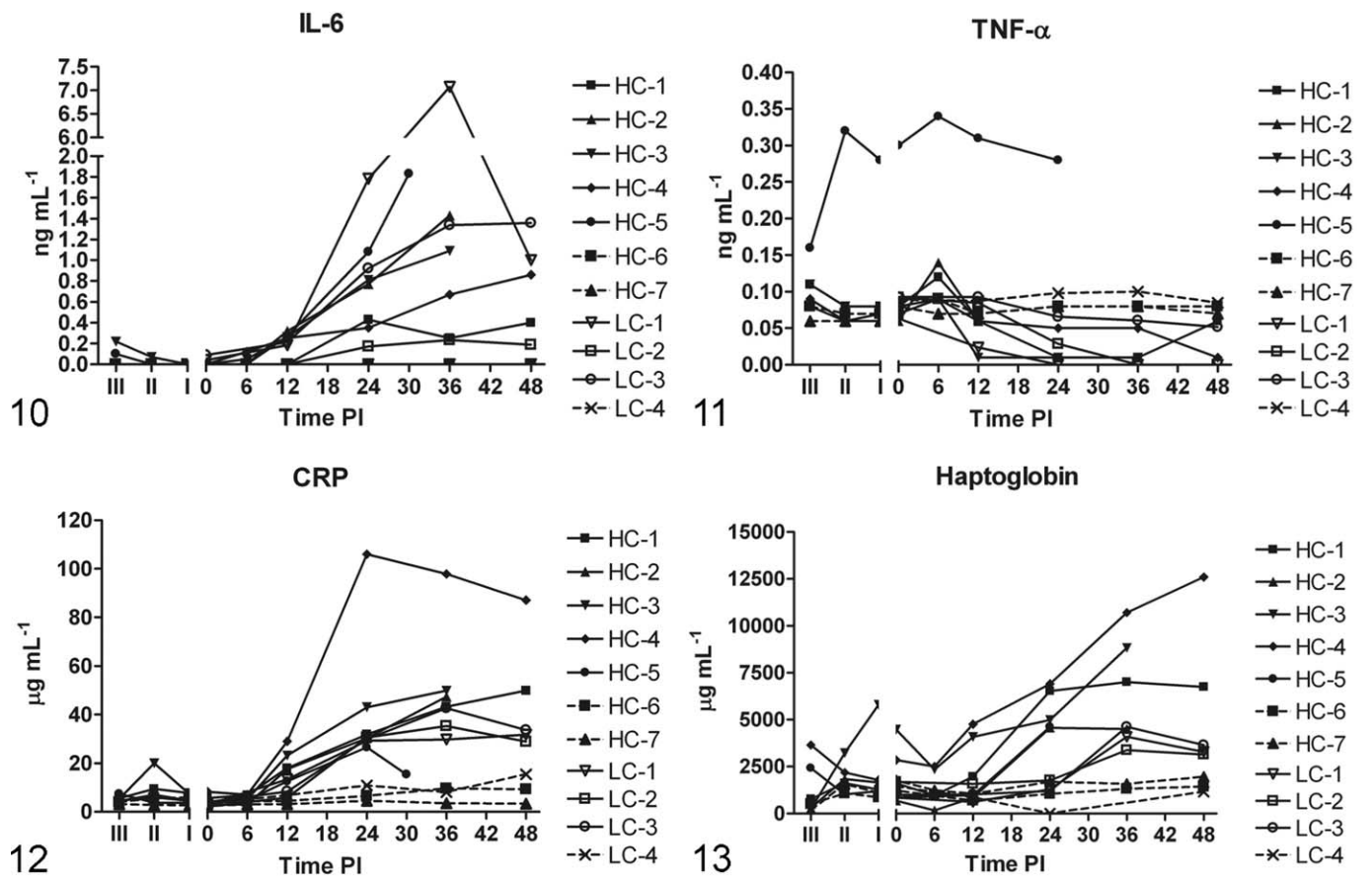
In the LC group (A), a good clearance was evidenced by a low bacterial count in the lung and limited tissue affection, whereas in the two HC groups (group B and C) the clearance capacity of the lungs or more specifically the PIMs appeared to have been exceeded, leading to bacterial containment within focal lesions. However, as the animals of Group B were euthanized at 30 h and 36 h PI, respectively, the effect of a time factor on the development of lesions cannot be rejected. It can only be speculated if the lung lesions of Group B would have developed into lesions similar to what was observed in Group C. Despite a similar short lifespan (36 h PI) of the animal in the HC Group D, neither clearance nor focal containment seemed to occur. More extensive lesions with a high pulmonary bacterial count were seen and may reflect an individual host immune response in this animal. Such extensive lesions could increase the risk of cytokine spillover from the lungs to the circulation.<sup>10,29,50</sup>

In other porcine studies, pulmonary clearance has been shown to be dependent on bacterial strain<sup>16</sup> and dose.<sup>15</sup> However, this study suggests that the difference in pulmonary clearance ability depends on the bacterial concentration in the inoculum rather than the total number of bacteria injected into the systemic circulation. This emphasizes the importance of reporting the concentration of the inoculum in bacterial infection studies.

Low or decreasing levels of mRNA coding for pulmonary pro-inflammatory cytokines were observed in Groups A

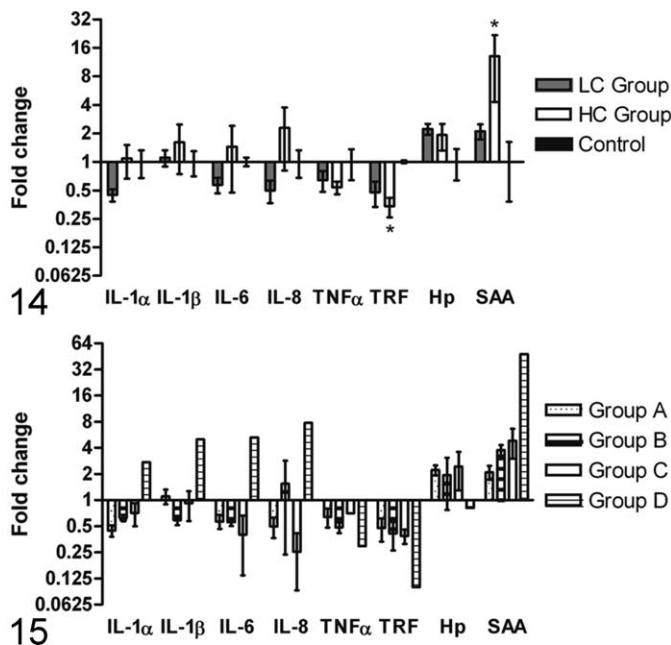


**Figure 8.** (A) Changes in body temperature in the different groups. Individual variations in the groups are shown by standard deviation (SD) bars. A marked rise in temperature was seen in the infected groups (A, B, C, D) compared to the control group (E). **Figure 9.** Individual changes in blood neutrophil count. Increased levels were seen in all infected animals, independently of receiving the LC or the HC dose. In both figures, the broken lines represent sham-inoculated control animals and the full lines the infected pigs.



**Figure 10.** Serum levels of interleukin-6 (IL-6) (ng/mL). Notice division of Y-axis, with the highest observed IL-6 levels in LC-1. IL-6 levels of sham-inoculated control animal (LC-4, HC-6, HC-7) were below the detection limit and are therefore not shown (no broken lines). **Figure 11.** Serum levels of tumor necrosis factor alpha (TNF $\alpha$ ) (ng/mL). Generally a high level of TNF $\alpha$  was observed in HC-5 in measurements both prior to and after inoculation. **Figure 12.** Serum levels of C-reactive protein (CRP) ( $\mu$ g/mL). **Figure 13.** Serum levels of haptoglobin (Hp) ( $\mu$ g/mL). In all figures, the broken lines represent sham-inoculated control animals and the full lines the infected pigs. First part of the x-axis = reference values from three time points before inoculation (III, II, and I). Last part of the x-axis = hours post inoculation (PI).





**Figure 14.** mRNA expression of inflammatory markers in lung tissue, visualized as fold changes for low concentration (LC = Group A) and high concentration (HC = Group B, C, and D) of *S. aureus* compared to sham-inoculated control animals (Control = Group E). Fold changes in the concentration groups (LC and HC) are shown as increasing or decreasing mRNA expression levels in comparison to the control group. Mean level of the control group was set to 1. mRNA levels coding for serum amyloid A (SAA) ( $P = .030$ ) and transferrin (TRF) ( $P = .022$ ), were found to be significantly up- and down-regulated in the high concentration group compared to the control group, respectively, represented by \*. **Figure 15.** Contributions to the fold changes from the individual infected groups (A, B, C, and D). In both figures, bars represent mean  $\pm$  SEM. Y-axis: note logarithmic scale.

through C, compared to the control group. The same groups showed correspondingly minor histological lung lesions (Group A) or focal confinement of major lesions by abscess formation (Groups B and C). In contrast, the lung with more extensive diffuse lesions (Group D/HC-2) showed up-regulations of 2fold to 8fold in IL-1 $\alpha$ , IL-1 $\beta$ , IL-6, and IL-8 mRNA levels. Similar up-regulation of mRNA levels of pro-inflammatory markers have been found in lungs infected with *Actinobacillus pleuropneumoniae*, where a high degree of tissue destruction and impairment of pulmonary boundaries is normally seen.<sup>3,36</sup> This suggests that the porcine pulmonary cytokine response could be dependent on the extent of tissue destruction and the degree of confinement or vice versa.

The highest mRNA fold changes of pro-inflammatory cytokines were seen for IL-8 in Group D/HC-2, corresponding with the more diffuse IL-8 response detected by IHC in the same pig (HC-2). Previous studies confirm the central role of IL-8 in the pathogenesis of human ARDS<sup>24</sup> and findings of high IL-8 protein content in the lungs of pigs with sepsis.<sup>12</sup> An IHC IL-8 response was also detected at the periphery of the abscesses in Groups B and C, equivalent to the location seen by mRNA in situ hybridization in other studies.<sup>3,6</sup> However, this was

contrasted by down-regulation of IL-8 mRNA levels in Group C, which might be explained by the fact that mRNA detection in tissue only reflects the gene expression at the time the sample is taken (eg, time of death in this study) and not necessarily the cytokine protein content, which could be accumulated in the tissue over time.<sup>13</sup>

The mRNA expression of acute phase proteins appeared to be highly induced in the lungs of infected pigs. SAA showed a step-wise increase in mRNA expression when moving from slightly affected to severely affected groups, which may reflect a local, pulmonary synthesis of this acute phase protein and mirror the degree of local tissue damage. SAA mRNA expression was clearly induced more dramatically than any of the other factors investigated. Haptoglobin, a hemoglobin-binding acute phase protein normally produced in the liver, has in previous studies been shown to increase in the serum of pigs with, for example, respiratory infections.<sup>22</sup> Increased levels of serum Hp were seen in all infected animals but primarily in pigs receiving the HC dose (HC-1, 3, and 4). However, mRNA expression in pulmonary tissue were almost equally enhanced in Groups A, B, and C, although no increases were seen in the highly diseased pig in Group D. Analysis of pulmonary Hp mRNA expression is complicated by the fact that neutrophils attracted to the lung during inflammation produce Hp.<sup>49</sup> However, Hp does seem to be highly induced locally in the infected lungs of the pigs in this study, probably as a manner of protection from oxidative damage due to hemoglobin.<sup>55</sup> This finding supports the theory by Hiss et al<sup>25</sup> of Hp production in bronchial/bronchiolar epithelium in infected porcine lungs, as it is seen in humans and mice.<sup>53,54</sup> In pigs with pleuropneumonia extra-hepatic Hp mRNA expression was also found in leucocytes, spleen, and lymph nodes.<sup>46</sup> As expected, mRNA levels of TRF, a negative acute phase reactant, were generally down-regulated in all infected animals but only significantly in the HC group.

All infected animals in both the LC and HC groups developed sepsis and severe sepsis with organ dysfunction (Soerensen et al, unpublished data, 2011),<sup>32</sup> fulfilling the SIRS criteria by signs of hyperventilation, marked increases in body temperature, and neutrophils.<sup>11</sup> This was furthermore supported by increased levels of systemic acute phase proteins (CRP and Hp) and IL-6.<sup>33</sup> Circulating IL-6 has previously been associated with prediction of multiple organ dysfunction in human septic patients.<sup>21</sup> Nevertheless, no correlation was observed between the severely affected lung with a high IL-6 mRNA level (Group D/HC-2) and high systemic protein levels of IL-6. On the contrary, the highest systemic IL-6 level was observed in a pig from the LC group (LC-1), in which local pulmonary mRNA IL-6 levels were down-regulated, thus suggesting that the lungs might not be the main contributor to the increasing systemic IL-6 protein levels. Lack of correlation between organ-specific cytokine expression and plasma cytokines has previously been described in inflammatory porcine models.<sup>13,19</sup> An ability of the lung to control or compartmentalize the cytokines has been shown by others<sup>3</sup> and speculations could be made that as a result of bacterial blood clearance in the lungs of the pig, a high degree of pulmonary self-regulation is

needed to prevent all infections from leading to severe pulmonary impairment and sepsis. This is supported by a porcine endotoxin study by Brix-Christensen et al,<sup>12</sup> where low cytokine protein content was found in the lung tissue compared to high levels in the kidney, adipose tissue, and liver. Systemic TNF $\alpha$  levels showed a small, transient peak at 6 h PI (only observed in HC groups). This does not preclude that a bigger response might have taken place in the unsampled 0 to 6 h PI time window and that the slightly elevated 6 h peak represent the decline of a larger peak. It has been shown previously that the TNF $\alpha$  response to Gram-positive infections in pigs might be absent altogether<sup>32</sup> or smaller and more slowly occurring,<sup>44</sup> compared to the TNF $\alpha$  response in Gram-negative infections, which are consistently found to be very high and often occurring within the first hour after infection.<sup>14,37,42</sup> However, one animal (HC-5) showed an abnormally high serum concentration of TNF $\alpha$ , which could indicate illness prior to inoculation (initiating at II). However, no other markers of inflammation were suspiciously increased. The great individual variation seen in both the systemic and the local inflammatory response, regardless of concentration, could mimic the large heterogeneity seen in human patients with sepsis. But it also reflects the low power of the study due to the few animals used.

In conclusion, in this study pulmonary clearance was found to be dependent on bacterial concentration of the inoculum rather than the total number of bacteria. Lesion dependent increases in mRNA levels of the acute phase protein SAA appear to reflect the degree of local tissue damage and could be a future target for developing a test for the degree of specific organ lesions. Furthermore, a correlation between the occurrence of nonconfined lesions and increasing mRNA levels of pro-inflammatory cytokines in the lungs was observed for one animal (Group D/HC-2). No obvious correlation was seen between the local pulmonary mRNA expression of inflammatory markers and the systemic levels of inflammatory markers. This could indicate that no major systemic cytokine contributions are seen by spillover from the lungs, despite the porcine PIMs causing a bacterial predisposition for lung lesions.<sup>15,41</sup>

### Acknowledgements

We thank Hanne H. Moeller, Betina Andersen, and Lisbet Kioerboe for their excellent assistance with tissue collection and histological staining procedures. We also thank Karin Tarp Wendt and Henriette Vorsholt for technical assistance with gene expression analysis.

### Declaration of Conflicting Interests

The authors declared no potential conflicts of interest with respect to the research, authorship, and/or publication of this article.

### Funding

The authors disclosed receipt of the following financial support for the research, authorship and/or publication of this article: This work was supported by grant no. 271-07-0417 from the Danish Medical Research Council (Ministry of Science, Technology and Innovation). The gene expression analysis was partly supported by the Danish Research Council for Technology and Production Sciences (274-07-0389).

### References

1. Abraham E, Matthay MA, Dinarello CA, et al. Consensus conference definitions for sepsis, septic shock, acute lung injury, and acute respiratory distress syndrome: time for a reevaluation. *Crit Care Med* 2000;**28**(1):232–235.
2. Andersen CL, Jensen JL, Orntoft TF. Normalization of real-time quantitative reverse transcription-PCR data: a model-based variance estimation approach to identify genes suited for normalization, applied to bladder and colon cancer data sets. *Cancer Res* 2004;**64**(15):5245–5250.
3. Baarsch MJ, Scamurra RW, Burger K, et al. Inflammatory cytokine expression in swine experimentally infected with *Actinobacillus-Pleuropneumoniae*. *Infect Immun* 1995;**63**(9):3587–3594.
4. Bancroft J, Gamble M. *Theory and Practice of Histological Techniques*. 6th ed. New York: Churchill Livingstone, Elsevier; 2008.
5. Benfield T, Espersen F, Frimodt-Moller N, et al. Annual report on *Staphylococcus aureus* bacteraemia cases 2006. [http://www.ssi.dk/Forskning/Infektioner/Systemiske%20infektioner/~ /media/Indhold/DK%20-%20dansk/Forskning/Infektioner/Annual06\\_3\\_rev.ashx](http://www.ssi.dk/Forskning/Infektioner/Systemiske%20infektioner/~ /media/Indhold/DK%20-%20dansk/Forskning/Infektioner/Annual06_3_rev.ashx). Published 2006. Accessed February 20, 2012.
6. Berndt A, Heller M, Kosmehl H. Cytokine mRNA expression in experimental porcine pneumonia. *Dtsch Tierarztl Wochenschr* 2002;**109**(4):205–209.
7. Bhatia M, Moochhala S. Role of inflammatory mediators in the pathophysiology of acute respiratory distress syndrome. *J Pathol* 2004;**202**(2):145–156.
8. Bianchi ATJ, Scholten JW, Moonen-Leusen HWM, et al. Development of the natural response of immunoglobulin secreting cells in pigs as a function of organ, age and housing. *Dev Comp Immunol* 1999;**23**(6):511–520.
9. Bianchi ATJ, Zwart RJ, Jeurissen SHM, et al. Development of the B- and T-cell compartments in porcine lymphoid organs from birth to adult life: an immunohistological approach. *Vet Immunol Immunopathol* 1992;**33**(3):201–221.
10. Bone RC. Toward a theory regarding the pathogenesis of the systemic inflammatory response syndrome: what we do and do not know about cytokine regulation. *Crit Care Med* 1996;**24**(1):163–172.
11. Bone RC, Balk RA, Cerra FB, et al. Definitions for sepsis and organ failure and guidelines for the use of innovative therapies in sepsis. The ACCP/SCCM Consensus Conference Committee. American College of Chest Physicians/Society of Critical Care Medicine. *Chest* 1992;**101**(6):1644–1655.
12. Brix-Christensen V, Gjedsted J, Andersen SK, et al. Inflammatory response during hyperglycemia and hyperinsulinemia in a porcine endotoxemic model: the contribution of essential organs. *Acta Anaesthesiol Scand* 2005;**49**(7):991–998.
13. Brix-Christensen V, Vestergaard C, Chew M, et al. Plasma cytokines do not reflect expression of pro- and anti-inflammatory cytokine mRNA at organ level after cardiopulmonary bypass in neonatal pigs. *Acta Anaesthesiol Scand* 2003;**47**(5):525–531.
14. Castellheim A, Thorgersen EB, Hellerud BC, et al. New biomarkers in an acute model of live *Escherichia coli*-induced sepsis in pigs. *Scand J Immunol* 2008;**68**(1):75–84.

15. Crocker SH, Eddy DO, Obenauf RN, et al. Bacteremia-host-specific lung clearance and pulmonary failure. *J Trauma* 1981; **21**(3):215–220.
16. Dehring DJ, Crocker SH, Wismar BL, et al. Comparison of live bacteria infusions in a porcine model of acute respiratory-failure. *J Surg Res* 1983; **34**(2):151–158.
17. Dehring DJ, Wismar BL. Intravascular macrophages in pulmonary capillaries of humans. *Am Rev Respir Dis* 1989; **139**(4):1027–1029.
18. du Manoir JM, Albright BN, Stevenson G, et al. Variability of neutrophil and pulmonary alveolar macrophage function in swine. *Vet Immunol Immunopathol* 2002; **89**(3–4):175–186.
19. Ebdrup L, Krog J, Granfeldt A, et al. Leukocyte, plasma, and organ-associated cytokine profiles in an animal model of acute inflammation. *APMIS* 2008; **116**(5):352–360.
20. Falk E, Fallon JT, Mailhac A, et al. Muramidase—a useful monocyte/macrophage immunocytochemical marker in swine, of special interest in experimental cardiovascular-disease. *Cardiovasc Pathol* 1994; **3**(3):183–189.
21. Frink M, van Griensven M, Kobbe P, et al. IL-6 predicts organ dysfunction and mortality in patients with multiple injuries. *Scand J Trauma Resusc Emerg Med* 2009; **17**:49–55.
22. Heegaard PMH, Klausen J, Nielsen JP, et al. The porcine acute phase response to infection with *Actinobacillus pleuropneumoniae*. Haptoglobin, C-reactive protein, major acute phase protein and serum amyloid A protein are sensitive indicators of infection. *Comp Biochem Physiol B* 1998; **119**(2):365–373.
23. Heegaard PMH, Pedersen HG, Jensen AL, et al. A robust quantitative solid phase immunoassay for the acute phase protein C-reactive protein (CRP) based on cytidine 5'-diphosphocholine coupled dendrimers. *J Immunol Methods* 2009; **343**(2):112–118.
24. Hildebrand F, Stuhmann M, van Griensven M, et al. Association of IL-8-251A/T polymorphism with incidence of Acute Respiratory Distress Syndrome (ARDS) and IL-8 synthesis after multiple trauma. *Cytokine* 2007; **37**(3):192–199.
25. Hiss S, Willbrenning GS, Suntz M, et al. Immunohistochemical localization of Haptoglobin in porcine lungs. *Anat Histol Embryol* 2008; **37**(3):196–199.
26. Imarisio JJ. Liver scan showing intense lung uptake in neoplasia and infection. *J Nucl Med* 1975; **16**(3):188–190.
27. Jensen HE, Nielsen OL, Agerholm JS, et al. A non-traumatic *Staphylococcus aureus* osteomyelitis model in pigs. *In vivo* 2010; **24**(3):257–264.
28. Johansen LK, Frees D, Aalbaek B, et al. A porcine model of acute, haematogenous, localized osteomyelitis due to *Staphylococcus aureus*: a pathomorphological study. *APMIS* 2011; **119**(2):111–18.
29. Kurahashi K, Kajikawa O, Sawa T, et al. Pathogenesis of septic shock in *Pseudomonas aeruginosa* pneumonia. *J Clin Invest* 1999; **104**(6):743–750.
30. Kvist PH, Bielecki M, Gerstenberg M, et al. Evaluation of subcutaneously-implanted glucose sensors for continuous glucose measurements in hyperglycemic pigs. *In vivo* 2006; **20**(2):195–203.
31. Kvist PH, Iburg T, Bielecki M, et al. Biocompatibility of electrochemical glucose sensors implanted in the subcutis of pigs. *Diabetes Technol Ther* 2006; **8**(4):463–475.
32. Leifsson PS, Iburg T, Jensen HE, et al. Intravenous inoculation of *Staphylococcus aureus* in pigs induces severe sepsis as indicated by increased hypercoagulability and hepatic dysfunction. *FEMS Microbiol Lett* 2010; **309**(2):208–216.
33. Levy MM, Fink MP, Marshall JC, et al. 2001 SCCM/ESICM/ACCP/ATS/SIS International Sepsis Definitions Conference. *Crit Care Med* 2003; **31**(4):1250–1256.
34. Martin GS, Mannino DM, Eaton S, et al. The epidemiology of sepsis in the United States from 1979 through 2000. *N Engl J Med* 2003; **348**(16):1546–1554.
35. Matute-Bello G, Frevert CW, Martin TR. Animal models of acute lung injury. *Am J Physiol Lung Cell Mol Physiol* 2008; **295**(3):L379–L399.
36. Mortensen S, Skovgaard K, Hedegaard J, et al. Transcriptional profiling at different sites in lungs of pigs during acute bacterial respiratory infection. *Innate Immun* 2011; **17**(1):41–53.
37. Nielsen EW, Hellerud BC, Thorgersen EB, et al. A new dynamic porcine model of meningococcal shock. *Shock* 2009; **32**(3):302–309.
38. Nielsen OL, Iburg T, Aalbaek B, et al. A pig model of acute *Staphylococcus aureus* induced pyemia [published online ahead of print March 27, 2009]. *Acta Vet Scand*. doi:10.1186/1751-0147-51-14
39. Opal SM. Severe sepsis and septic shock: defining the clinical problem. *Scand J Infect Dis* 2003; **35**(9):529–534.
40. Pedersen LG, Castelruiz Y, Jacobsen S, et al. Identification of monoclonal antibodies that cross-react with cytokines from different animal species. *Vet Immunol Immunopathol* 2002; **88**(3–4):111–122.
41. Ricci MA, Mehran R, Christou NV, et al. Species differences in the clearance of *Staphylococcus aureus* bacteremia. *J Invest Surg* 1991; **4**:53–58.
42. Rimmele T, Assadi A, Benatir F, et al. Validation of a *Pseudomonas aeruginosa* porcine model of septic shock. *Journal of Infection* 2006; **53**(3):199–205.
43. Rubenfeld GD, Caldwell E, Peabody E, et al. Incidence and outcomes of acute lung injury. *New Engl J Med* 2005; **353**(16):1685–1693.
44. Saetre T, Hoiby EA, Aspelin T, et al. Acute serogroup A streptococcal shock: A porcine model. *J Infect Dis* 2000; **182**(1):133–141.
45. Singh B, Pearce JW, Gamage LN, et al. Depletion of pulmonary intravascular macrophages inhibits acute lung inflammation. *Am J Physiol Lung Cell Mol Physiol* 2004; **286**(2):L363–L372.
46. Skovgaard K, Mortensen S, Boye M, et al. Rapid and widely disseminated acute phase protein response after experimental bacterial infection of pigs [published online ahead of print February 24, 2009]. *Vet Res*.
47. Soerensen CM, Holmskov U, Aalbaek B, et al. Pulmonary infections in swine induce altered porcine surfactant protein D expression and localization to dendritic cells in bronchial-associated lymphoid tissue. *Immunology* 2005; **115**(4):526–535.
48. Staub NC. Pulmonary intravascular macrophages. *Annu Rev Physiol* 1994; **56**:47–67.
49. Theilgaard-Monch K, Jacobsen LC, Nielsen MJ, et al. Haptoglobin is synthesized during granulocyte differentiation, stored in specific granules, and released by neutrophils in response to activation. *Blood* 2006; **108**(1):353–361.



50. Tutor JD, Mason CM, Dobard E, et al. Loss of compartmentalization of alveolar tumor necrosis factor after lung injury. *Am J Respir Crit Care Med* 1994;**149**(5):1107–1111.
51. Vandesompele J, De Preter K, Pattyn F, et al. Accurate normalization of real-time quantitative RT-PCR data by geometric averaging of multiple internal control genes [published online ahead of print June 18, 2002]. *Genome Biol.*
52. Winkler GC. Pulmonary intravascular macrophages in domestic-animal species - review of structural and functional-properties. *Am J Anat* 1988;**181**(3):217–234.
53. Yang FM, Friedrichs WE, Navarijoashbaugh AL, et al. Cell-type-specific and inflammatory-induced expression of haptoglobin gene in lung. *Lab Invest* 1995;**73**(3):433–440.
54. Yang FM, Ghio AJ, Herbert DC, et al. Pulmonary expression of the human haptoglobin gene. *Am J Respir Cell Mol Biol* 2000;**23**(3):277–282.
55. Yang FM, Haile DJ, Berger FG, et al. Haptoglobin reduces lung injury associated with exposure to blood. *Am J Physiol Lung Cell Mole Physiol* 2003;**284**(2): L402–L409.