



Data imputation and body weight variability calculation using linear and nonlinear methods in data collected from digital smart scales

Simulation and validation study

Turicchi, Jake; O'Driscoll, Ruairi; Finlayson, Graham; Duarte, Cristiana; Palmeira, A. L.; Larsen, Sofus C.; Heitmann, Berit L.; James Stubbs, R.

Published in:

JMIR mHealth and uHealth

DOI:

[10.2196/17977](https://doi.org/10.2196/17977)

Publication date:

2020

Document version

Publisher's PDF, also known as Version of record

Document license:

[CC BY](#)

Citation for published version (APA):

Turicchi, J., O'Driscoll, R., Finlayson, G., Duarte, C., Palmeira, A. L., Larsen, S. C., Heitmann, B. L., & James Stubbs, R. (2020). Data imputation and body weight variability calculation using linear and nonlinear methods in data collected from digital smart scales: Simulation and validation study. *JMIR mHealth and uHealth*, 8(9), [e17977]. <https://doi.org/10.2196/17977>

Original Paper

Data Imputation and Body Weight Variability Calculation Using Linear and Nonlinear Methods in Data Collected From Digital Smart Scales: Simulation and Validation Study

Jake Turicchi¹, BSc; Ruairi O'Driscoll¹, MSc; Graham Finlayson¹, PhD; Cristiana Duarte¹, PhD; A L Palmeira², PhD; Sofus C Larsen³, PhD; Berit L Heitmann^{3,4,5}, PhD; R James Stubbs¹, PhD

¹School of Psychology, The University of Leeds, Leeds, United Kingdom

²Faculdade de Motricidade Humana, Universidade de Lisboa, Lisbon, Portugal

³Research Unit for Dietary Studies, The Parker Institute, Bispebjerg and Frederiksberg Hospital, The Capital Region, Copenhagen, Denmark

⁴The Boden Institute of Obesity, Nutrition and Eating disorder, University of Sydney, Sydney, Australia

⁵Department of Public Health, Section for General Medicine, University of Copenhagen, Copenhagen, Denmark

Corresponding Author:

Jake Turicchi, BSc
School of Psychology
The University of Leeds
2 Lifton Place
Leeds, LS2 9JS
United Kingdom
Phone: 44 7718300764
Email: psjt@leeds.ac.uk

Abstract

Background: Body weight variability (BWV) is common in the general population and may act as a risk factor for obesity or diseases. The correct identification of these patterns may have prognostic or predictive value in clinical and research settings. With advancements in technology allowing for the frequent collection of body weight data from electronic smart scales, new opportunities to analyze and identify patterns in body weight data are available.

Objective: This study aims to compare multiple methods of data imputation and BWV calculation using linear and nonlinear approaches

Methods: In total, 50 participants from an ongoing weight loss maintenance study (the NoHoW study) were selected to develop the procedure. We addressed the following aspects of data analysis: cleaning, imputation, detrending, and calculation of total and local BWV. To test imputation, missing data were simulated at random and using real patterns of missingness. A total of 10 imputation strategies were tested. Next, BWV was calculated using linear and nonlinear approaches, and the effects of missing data and data imputation on these estimates were investigated.

Results: Body weight imputation using structural modeling with Kalman smoothing or an exponentially weighted moving average provided the best agreement with observed values (root mean square error range 0.62%-0.64%). Imputation performance decreased with missingness and was similar between random and nonrandom simulations. Errors in BWV estimations from missing simulated data sets were low (2%-7% with 80% missing data or a mean of 67, SD 40.1 available body weights) compared with that of imputation strategies where errors were significantly greater, varying by imputation method.

Conclusions: The decision to impute body weight data depends on the purpose of the analysis. Directions for the best performing imputation methods are provided. For the purpose of estimating BWV, data imputation should not be conducted. Linear and nonlinear methods of estimating BWV provide reasonably accurate estimates under high proportions (80%) of missing data.

(*JMIR Mhealth Uhealth* 2020;8(9):e17977) doi: [10.2196/17977](https://doi.org/10.2196/17977)

KEYWORDS

weight variability; weight fluctuation; weight cycling; weight instability; imputation; validation; digital tracking; smart scales; body weight; energy balance

Introduction

Background

Recently, the idea of remote health care monitored through a network of internet-connected devices, termed *The (Medical) Internet of Things* [1-3], has become popular, and in 2020, it is thought that 40% of internet of things–related technology is health related, accounting for US \$117 billion [4]. With this information, precision medicine will become the future of health care. Frequently tracked body weight data are likely to become a valuable prognostic tool. We have already seen the incorporation of Wi-Fi–connected smart scales into research environments [5-7] accompanied by an increase in popularity and a decrease in costs among the general public. In weight management interventions, 80% and 60% of successful weight loss maintainers report self-weighing weekly and daily, respectively [8]. Regular self-weighing in research environments using tracking technologies will allow for more accurate recognition of body weight patterns, which are currently not well understood.

Body weight variability (BWV), that is, the variability around the overall trend in body weight, can be quantified from frequent body weight measures. Several recent studies have associated BWV with outcomes such as all-cause mortality [9-11], type 2 diabetes incidence [12], cardiovascular morbidity or mortality [13,14], and cancer [15]. Further indications suggest that BWV may serve as a potential prognostic tool for obesity [16,17] and as a risk factor in patients with heart failure [18]. However, significant heterogeneity exists in the methods used to process body weights and define BWV.

Although body weight is a reliable, valid, and simple metric to measure, its short-term dynamics are not well understood because, until recently, it has been difficult and time-consuming to make frequent longitudinal measures from an objective (ie, not self-reported) source, and previous studies estimating BWV generally use infrequent measurements (eg, every 6-12 months). Limitations in the methodologies used may contribute to the poor replicability of the results drawn from differing studies and populations: (1) definitions used and statistical inferences drawn from longitudinal weight data are extremely heterogeneous, (2) body weight changes are often measured retrospectively (by self-report) and/or infrequently (12 months apart), (3) overall trends in body weight (eg, weight increase or decrease) are often not addressed appropriately and may confound independent effects of BWV, and (4) missing data are often not appropriately addressed. Simple linear approaches to the measurement of BWV (such as root mean square error [RMSE] around the linear trend) are not able to fully differentiate the overall trend from the variability component. New strategies must be developed to improve the estimation of BWV.

Using frequent body weight measurements, few studies have examined weekly [19-21] or seasonal [21-23] patterns in body weight, although no study to our knowledge has estimated total BWV over the long term. In future, tracking technologies will become increasingly popular and accompanied by the acquisition

of dense and complex data. Appropriate, validated, and accessible data processing methodologies must be devised to deal with such data. Such protocols have been developed for activity tracking [24-26], although they lack body weight tracking.

Objectives

Recently, we collected body weight data from Wi-Fi–connected smart scales in individuals engaged in a weight loss maintenance trial (the NoHoW trial [27]) over 12 months. Therefore, we aimed to develop and evaluate a statistical protocol for analyzing frequent weight data by outlining an approach to cleaning, imputation, detrending, and estimating BWV using frequent body weight data to better inform future practices and quantify the magnitude of errors potentially associated with BWV estimates.

Methods

Materials and Subjects

For the purpose of this analysis, a subsample of 50 individuals were selected from the 1627 participants in the NoHoW trial. The NoHoW study is a 2×2 randomized controlled trial (RCT) testing the efficacy of an information and communications technology–based toolkit for delivering a weight loss maintenance intervention structured around evidence-based strategies related to self-regulation and emotion regulation in the United Kingdom (Leeds), Denmark (Copenhagen), and Portugal (Lisbon). Full inclusion and exclusion criteria and procedures can be found elsewhere [27]. Individuals who participated in the trial had reported ≥5% body weight loss in the 12 months before recruitment. The trial was registered with the ISRCTN registry (ISRCTN88405328). The study was conducted in accordance with the Helsinki Declaration. Ethical approval was granted by local institutional ethics committees at the University of Leeds (17-0082; February 27, 2017), the University of Lisbon (17/2016; February 20, 2017), and the Capital Region of Denmark (H-16030495; March 8, 2017).

The selection of the 50 participants for this analysis was based on those who had the greatest number of weight measurements in the first 12 months of the trial. Selecting those with the greatest completeness of data allowed for (1) better ability to simulate missingness and test imputation performance and (2) more valid baseline estimation of BWV, which can be used to test the agreement with other estimations (in comparison with missing simulated and imputed data). Although the study was an RCT, the structure of the RCT was not used, and all its arms were collapsed. Only 50 individuals were chosen to limit missingness in the observed data, which increases with sample size. All participants were provided with a Fitbit Aria (Fitbit Inc) body weight scale linked to a personalized Fitbit account, and the data were retrieved via the Fitbit app programming interface to a web-based data hub. The device has been shown previously by others to have excellent agreement with a calibrated research-grade SECA 769 scale [28]. Participants were instructed to weigh themselves at least twice per week for the duration of the trial. The characteristics of the participants are presented in Table 1.

Table 1. Participant characteristics (N=50).

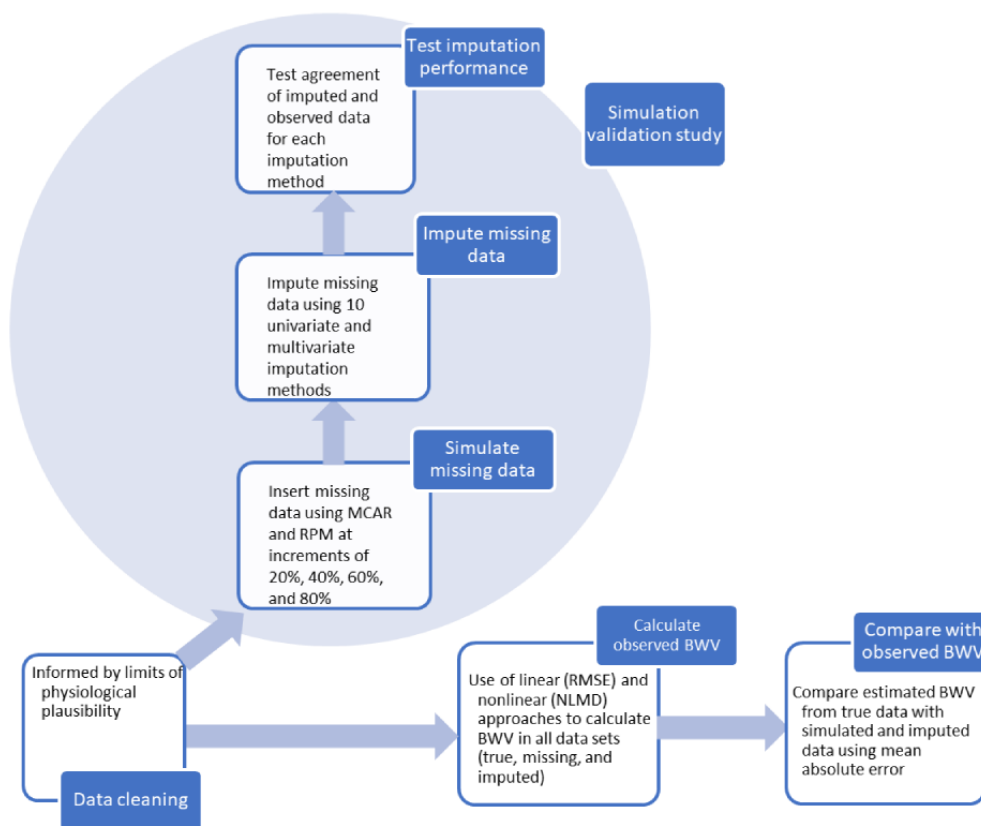
Characteristics	Values
Gender, n (%)	
Male	15 (30)
Female	35 (70)
Age (years), mean (SD)	49.2 (9.3)
Weight (kg), mean (SD)	81.9 (15.4)
BMI (kg/m ²), mean (SD)	29.3 (6.8)
Number of weight measurements, mean (SD)	336.0 (9.1)

Analysis Overview

All statistical analyses were conducted using R version 3.5.1. All statistical codes used can be found in GitHub [29]. A flow diagram of the study is shown in Figure 1. First, we removed outliers based on the limits of physiological plausibility (detailed in Multimedia Appendix 1). Next, we used an amputation and imputation strategy outlined previously [30,31], which involved the simulation of missing data by 2 mechanisms: (1) removal completely at random and (2) removal informed by true patterns of missingness, followed by imputation using univariate and

multivariate methods and performance testing using RMSE. Next, we calculated BWV in observed, simulated (ie, inserted missingness), and imputed data sets. This was done to test the accuracy of BWV estimation under conditions of incrementally missing data and when missing data were imputed. BWV was estimated using a commonly used linear approach (RMSE) and a nonlinear approach (nonlinear mean deviation, NLMD) devised for this analysis. Finally, we compared the agreement between BWV estimates from observed weight with those generated by simulated and imputed data sets under different conditions of missingness.

Figure 1. Study flow diagram. Outline of the study detailing the simulation validation study aimed to test imputation performance and calculation of linear and nonlinear body weight variability under conditions of true, missing, and imputed data sets with associated comparisons. BWV: body weight variability; MCAR: missing completely at random; NLMD: nonlinear mean deviation; RMSE: root mean square error; RPM: real patterns of missingness.



Data Cleaning

Data outliers may be present for numerous reasons such as (1) decalibration of electronic scales, (2) inconsistent weighing conditions (eg, clothed vs unclothed or morning vs night), (3) weighing of another person of similar weight (which may register as a rapid weight change on the same Fitbit account), and (4) incorrect manual entry of body weight. We defined the limits of physiological plausibility for weight change over given periods, which can be seen in [Multimedia Appendix 1](#). These limits were informed by substantial weight changes reported during rapid weight loss, such as those achieved by a very low-calorie diet [32,33], and rapid weight gain observed in intentional overfeeding studies [34,35]. It was deemed preferable to remove data based on these plausible limits than risk-removing potentially correct data.

Data Removal

Typically, self-weighing is irregular, and thus, missing data are common. Missing data are generally categorized into missing at random (MAR), missing completely at random (MCAR), or not MAR [36]. Absence of body weight data may have identifiable mechanisms, for example, breaks in self-weighing may be indicative of weight gain [37]; however, these patterns may not be consistent between and within individuals. Data described as MCAR has no mechanism of missingness; however, data that are MAR are not related to the missing data but may be partially explained by the observed data. The data removal processes are described in detail in [Multimedia Appendix 2](#). Briefly, to simulate missing data, we used 2 strategies. First, we inserted data using an MCAR strategy in increments of 20%, 40%, 60%, and 80%. For each of the 50 participants, we simulated 20 data sets per increment of missingness within each participant's data, resulting in 4000 total MCAR-simulated data sets. One potential concern is that missing data in observed data are not entirely MCAR; therefore, MCAR simulation may not be representative of true missingness. To address this, we selected 20 random participants (for each increment of missingness) from our entire NoHoW study sample of 1627 individuals with approximately 20%, 40%, 60%, and 80% missing data and imposed these missing patterns on our 50-participant sample (with a near-complete data), resulting in 4000 simulated data sets with real patterns of missingness (RPM) data. Removing 20%, 40%, 60%, and 80% data left a mean of 255 (SD 54.5), 209 (SD 36.2), 144.8 (SD 50.1), and

67 (SD 40.1) available data points within a year (bearing in mind some data was missing in the original samples).

Data Imputation

Data imputation can be broadly divided into univariate and multivariate approaches. Univariate methods impute missing data based on information gained from a single variable (in this case, a time series [TS] of body weights), whereas multivariate algorithms can be used to infer predictive value from related variables [38] through regression, clustering, or even advanced deep learning techniques. In a remote health care setting, many potentially useful variables for imputing weight data may not be collected (eg, information on psychology and behavior or physiological features), in which case univariate imputation may be necessary. The imputation of univariate TS data lends itself to a limited number of techniques that have been reviewed previously [30].

In total, 7 univariate imputation algorithms and 3 multivariate analyses were run on all missingness-simulated data sets. Univariate methods included (1) linear interpolation; (2) cubic spline interpolation; (3) Stine interpolation; (4) exponentially weighted moving average (EWMA); (5) structural modeling with Kalman smoothing (SMKS); (6) AutoRegressive Integrated Moving Average (ARIMA) state-space representation and Kalman smoothing (ASSRKS), all from the impute TS package [39]; and finally (7) an approach using the Friedman super smoother on nonseasonal data or seasonal decomposition on seasonal data followed by interpolation (TsClean) from the forecast package [40]. Each method is described briefly in [Textbox 1](#). Illustrated examples using a single participant, showing imputation of 40% and 80% missingness by each imputation method, are provided in [Multimedia Appendix 3](#). Multivariate imputation techniques, namely, 2 machine learning techniques (a K-nearest neighbors [KNN] method from the Data Mining with R (DMwR) package [41] and a random forest [RF] method from the MissForest package [42]) and a regression-based technique using predictive means matching (PMM) from the multivariate imputation by the chained equations (MICE) package [43] are described in [Textbox 1](#). To maximize the usability of these methods where further information on participants were not available, we used only the day number and the day of the week as predictive variables for multivariate imputation.

Textbox 1. Description of univariate time series imputation methods used.

<p>Linear interpolation</p> <ul style="list-style-type: none"> This method looks for a straight line that passes between 2 values (Xa and Xb), where the imputed values are bound between Xa and Xb. It has been demonstrated to be efficient when predicting values with constant rate of change [44], however, it tends to smooth data rather than impute variability <p>Spline interpolation</p> <ul style="list-style-type: none"> This method fits local polynomial functions, which are connected at each end to form a spline, creating a succession of cubic splines over successive intervals of the data [45]. The order of the polynomial can be defined manually. The approach benefits from its nonlinear approach; however, its ability to predict oscillations from univariate data is limited [46] <p>Stine interpolation</p> <ul style="list-style-type: none"> This is an advanced interpolation method where interpolation occurs based on (1) whether values of the ordinates of the specified points change monotonically and (2) the slopes of the line segments joining the specified points change monotonically. It produces a smoothed imputation known to be robust against sporadic outliers and performs better than spline interpolations, where abrupt changes are observed [47] <p>Exponentially weighted moving average (EWMA)</p> <ul style="list-style-type: none"> This approach calculates the EWMA by assigning the value of the moving average window, which is user defined; the mean, thereafter, is calculated from equal number of observations on either side of a central missing value. The weighting factors decrease exponentially the greater distance from the missing value <p>Structural modeling with Kalman smoothing</p> <ul style="list-style-type: none"> This method aims to identify the structure (trend, seasonality, and error) in a time series (TS). Unlike AutoRegressive Integrated Moving Average (ARIMA) state-space approaches where each component is eliminated, these components are used to inform imputation of missing data. Kalman filter and smoothing works in 2 steps to (1) produce estimates of the current state variables, along with their uncertainties, and (2) update estimates using a moving average to give a smoothing effect [48]. The Kalman smoother is given the entire sample and is not locally weighted. The Kalman smoother is robust to disparate observation periods (eg, when observations are made weekly and monthly in one TS) [49] <p>ARIMA state-space representation and Kalman smoothing</p> <ul style="list-style-type: none"> This method converts the TS to an ARIMA model by decomposing the trend, seasonality, and error through a differencing protocol, resulting in a stationary TS where means and covariances would remain invariant over time [31]. Next, a Kalman smoother is applied as above <p>TsClean [40]</p> <ul style="list-style-type: none"> This method first assesses evidence of seasonality. If present, a robust seasonal-trend decomposition for seasonal series is conducted followed by linear interpolation. If no seasonality is present, Friedman's super smoother [50] is applied followed by linear interpolation <p>K-nearest neighbors [41]</p> <ul style="list-style-type: none"> For every observation to be imputed, this algorithm locates k closest observations based on the Euclidean distance [51] and computes the weighted average (weighted based on distance) of these k observations <p>Random forest [42]</p> <ul style="list-style-type: none"> This method is an extension of typical classification and regression, which generates predictive models that recursively subdivide the data based on values of the predictor variables. It does not rely on parametric assumptions and can accommodate nonlinear interactions, although it may be prone to overfitting [51] <p>Predictive means matching [43]</p> <ul style="list-style-type: none"> For each missing entry, this method generates a small set of candidate donors from all complete cases that have predicted values closest to the predicted value for the missing entry. One donor is randomly drawn from the candidates, and the observed value of the donor is taken to replace the missing value. The assumption is the distribution of the missing cell is the same as the observed data of the candidate donors
--

Estimating Body Weight Variability

We estimated BWV using 2 discrete methods in the observed data as well as in all simulated and imputed data sets. These methods are illustrated in [Figure 2](#) for linear (top) and nonlinear (bottom) approaches. First, the RMSE method was used by calculating the relative residual error of the linear relationship between body weight and time ([Figure 2](#)). Relative residuals were produced by dividing the centered weight by the observed

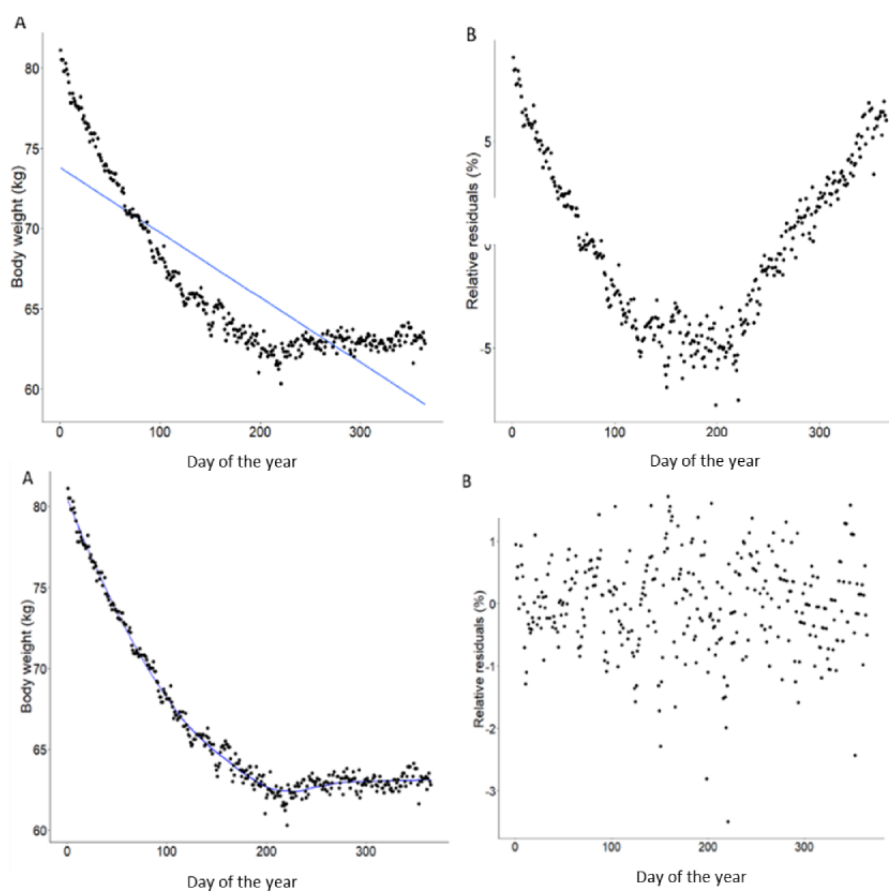
weight at each time point ([Figure 2](#)). This method is commonly used to assess BWV in epidemiological research [16,52-56], although it is limited by the assumption of linearity of body weight change. For example, if an individual displays a curvilinear weight trajectory (such as in [Figure 2](#)), then the residuals from a linear trendline will be substantially different from those from a nonlinear trendline. To overcome this, we devised a nonlinear approach detailed below.

First, the series of body weights was detrended for each individual. Detrending is a necessary step in the decomposition of a TS. It can be used to isolate the variability component of the series from the overall trend, resulting in a combination of seasonal patterns (eg, any repetitive patterns including within-week) and random noise. First, a locally estimated scatterplot smoothing (LOESS) regression was fitted to each participant (Figure 2). LOESS regression is a nonlinear, nonparametric smoothing tool. Owing to its nonparametric approach, it does not assume previous specifications about the structure of the data, thus allowing for visual representation of relationships that do not conform to any structure [57]. LOESS regressions were conducted with the *stats* package in R [58]. It employs quadratic polynomial models on a moving collection of data points (termed a *neighborhood*) in a TS [59]. The size of the neighborhood is user defined and referred to as the *span* of the LOESS model, with greater spans creating more smooth trends because of using a wider collection of surrounding data

points, whereas shorter spans resulting in closer fitting to the data. The span fits data based on the number of available data; therefore, when fitting the LOESS to data with missingness, the span must be reactive to the number of weight measurements available. To address this, we generated a linear relationship between the span and the number of available data, which resulted in a similar BWV estimation under varying conditions of missingness. Finally, a polynomial order of 2 was used in the model based on the nonlinearity of body weight data, as suggested previously [57].

The detrending process centers body weight around 0. The centered weights were converted to relative centered weights by dividing the centered weight by the observed weight at each time point (Figure 2). This gives an estimate of the relative deviation from the nonlinear trend. BWV was estimated by taking the mean of the centered relative residuals (which act as a proxy of the mean relative deviation from the trend on each day).

Figure 2. Performance summaries of univariate and multivariate imputation. Boxplots of the errors associated with imputation of body weight data collected by smart scales. Data was removed by a missing completely at random algorithm (left plots) and also informed by real patterns of missingness (right plots) in increments of 20%, 40%, 60% and 80%. Imputation was done by 7 univariate methods (top plots) and 3 multivariate methods (bottom plots). Root mean square error was used as the performance metric. ASSRKS: ARIMA state-space representation and Kalman smoothing; EWMA: exponentially weighted moving average; KNN: K-Nearest neighbors; Lin Int: linear interpolation; PMM: predictive means matching; RF: random forest; RMSE: root mean square error; SMKS: structural modelling with Kalman smoothing; Spline int: spline interpolation; Stine int: stine interpolation.



Data Availability

There are legal restrictions on sharing data from this study that contain potentially identifying or sensitive personal information. The restrictions are imposed by the Danish Data Protection Agency Data used in this study will be made available upon request after application to the NoHoW data controller (the James Hutton Institute). The application procedure can be obtained from the James Hutton Institute (DPO@hutton.ac.uk) or David Nutter (david.nutter@bioss.ac.uk).

Results

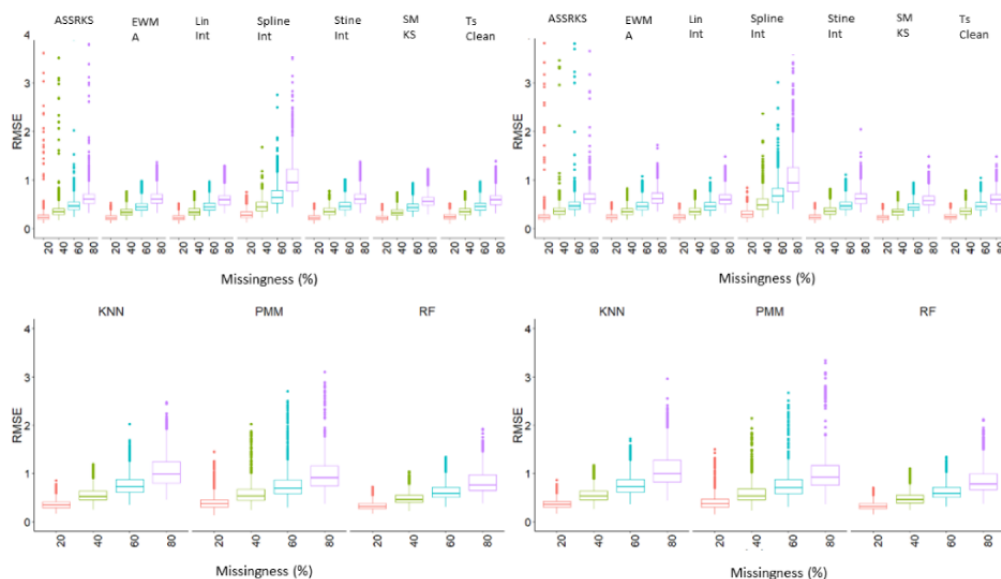
Imputation Performance

All imputation algorithms were run on each simulated data set, generating 28,000 and 12,000 imputed data sets from MCAR and RPM simulations, respectively (4000 imputed data sets per imputation method). The performance of each imputed data set in comparison with the observed weight data was evaluated using the RMSE, which is commonly used for performance evaluation [60]. The RMSE was calculated using the following equation:

$$RMSE = \sqrt{\frac{\sum_{i=1}^n (Observed_i - Imputed_i)^2}{n}}$$

The results were grouped by imputation strategy and proportion of missingness. A summary of the performances is illustrated using the RMSE in Figure 3, and the full results are provided in Multimedia Appendix 4. To further test the imputation performance, we used the mean absolute percentage error and mean absolute error, the results of which are shown in Multimedia Appendix 5. The errors increased with greater amounts of missing data. SMKS showed the lowest errors overall, followed by EWMA, linear interpolation, and Stine interpolation, though each of these methods were similar in performance. Machine learning-based methods (RF and KNN) generally performed worse than univariate methods, as did the regression-based multivariate method PMM. The ASSRKS method showed the greatest error, followed by the spline interpolation. Imputation of MCAR-simulated data sets generally showed lower errors than RPM-simulated data sets.

Figure 3. Illustration of linear and non-linear calculation of body weight variability. Scatterplots represent an example of a single participant with a non-linear weight trajectory over 12-months. Figure (A) shows a linear trendline fitted to the data with (B) the trendline subtracted and the associated residuals plotted. Figure (C) shows a non-linear locally estimated scatterplot smoothing regression fitted to the data with (D) the trendline subtracted and the associated residuals plotted. RMSE: root mean square error.

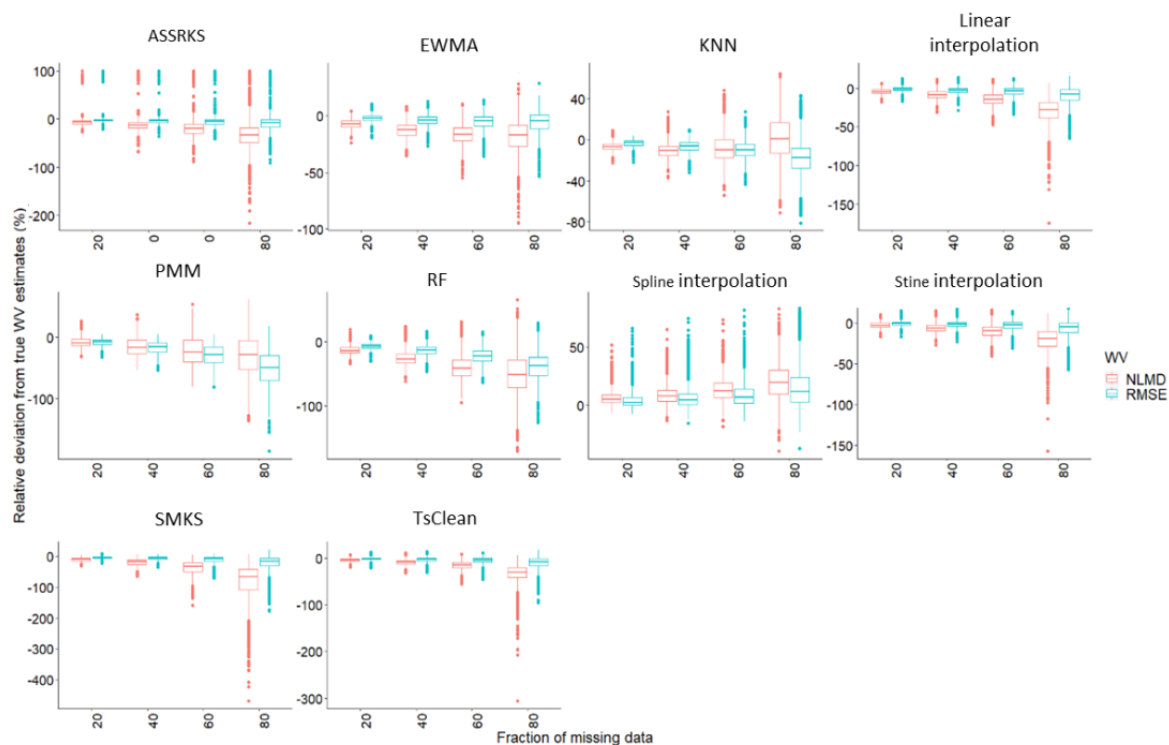


Calculation of BWV

Next, we investigated the agreement between BWV estimations from observed data sets and simulated and imputed data sets for each participant. First, data sets simulated by MCAR and RPM were combined. For simulated data sets (ie, those with missing data), the errors were minimal, reaching an average of 7% (SD 15.4) and 3.2% (SD 19.5) disagreement between the true weight variability (WV) estimates and estimates made on 80% missing data for nonlinear and linear BWV calculation methods, respectively. At 60%, 40%, and 20% of missing data,

errors were 2.3% (SD 9.1) and 0.6% (SD 7.3), 1.3% (SD 6.4) and 0.4% (SD 9.8), and 0.4% (SD 6.9) and 0.2% (SD 6.0) for nonlinear and linear WV estimates, respectively, compared with true estimates. The full results can be viewed in Multimedia Appendix 6. When data were imputed, imputation introduced substantial errors in BWV estimates (Figure 4). For most methods, imputation resulted in underestimation of BWV, apart from spline imputation, which overestimated BWV. Biases increased with missingness and were generally greater for NLMD than for RMSE.

Figure 4. Influence of data imputation on linear and non-linear body weight variability estimates. Caption: Boxplots of the relative errors associated with calculation of body weight variability in body weight data collected by smart scales when using 10 different imputation methods imputing data in increments of 20%, 40%, 60%, and 80%. Errors represent the deviation from estimates made from observed data sets. ASSRKS: ARIMA state-space representation and Kalman smoothing; EWMA: exponentially weighted moving average; KNN: K-nearest neighbors; NLMD: nonlinear mean deviation; PMM: predictive means matching; RF: random forest; RMSE: root mean square error; SMKS: structural modeling with Kalman smoothing.



Discussion

In this study, we proposed a method for processing body weight data acquired from electronic smart scales, with both general and specific applications (to BWV). The analysis was produced in response to the increasing use of smart scales in clinical and research environments [24-26]. For the purposes of cleaning, imputation, and detrending, this analysis can inform most researchers dealing with body weight data from smart scales. Furthermore, we provide specific validations on the estimation of BWV using linear and nonlinear approaches and report the errors associated with these estimations when (1) data are missing and (2) data are imputed. We found that SMKS, EWMA, and linear interpolation performed imputation best. These methods are available to researchers through many statistical packages [39]. For the purpose of estimating BWV, we showed that leaving data as missing does not introduce significant bias (only 3%-7% error with >80% data missing), whereas calculating BWV on imputed data causes significant underestimation and should be avoided.

Body Weight Imputation

We considered 7 univariate and 3 multivariate approaches to imputation. As access to further individual-level information (eg, participant characteristics or behavioral patterns and psychological traits) may be unavailable, body weight data collected by smart scales may be treated as univariate, and therefore, the use of more advanced approaches to multivariate imputation such as tree-based models, neural networks, and KNN methods is limited. To test multivariate imputation

algorithms, we added day number (ie, day of trial) and day of the week as predictive variables, as these can be automatically collected in free-living environments without any participant burden. Within-week (eg, weekday vs weekend) fluctuations in body weight have been shown previously [19,20] and may have predictive value in imputation. However, we found that these methods, in the current circumstances, did not outperform simple methods such as SMKS or EWMA on MCAR- or RPM-simulated data sets. Indeed, machine learning methods may perform better when trained on large, complete data sets and then applied to missing data; however, in this analysis, we did not have enough complete data sets to train machine learning imputation models, and we chose to limit the variables used in multivariate imputation to improve accessibility. This is the first study to address the issue of missingness and imputation in body weight tracking data; however, several studies have addressed the tracking of physical activity from accelerometers [25,61,62], often using similar simulation and validation approaches with success.

Body Weight Variability Estimation

We proposed a method of estimating BWV using a nonlinear approach, which we termed NLMD. This was devised to address the assumption of linearity associated with RMSE estimations commonly used. Using a nonlinear approach, the trendline is fitted more closely to the data. The result is the ability to identify day-to-day variability or within-week patterns. In contrast, in the case of curvilinear weight trends, RMSE generates large residual errors; this may be more suitable when the aim is to detect larger fluctuations over several months or years. We

found that BWV estimates from data sets with simulated missingness were similar to true estimates, using both RMSE and NLMD methods. Surprisingly, using our current methods, BWV estimates were not greatly different between complete and 80% missing data sets (3.2%, SD 0.2% and 7.0%, SD 0.2% for RMSE and NLMD methods, respectively). However, when these missing data were imputed, substantial biases were introduced largely as underestimations, which increased for each increment of imputed data. As such, although our imputation-validation analysis may inform general imputation of body weight data for numerous other purposes, for the purpose of estimating BWV, we advise that data be left as missing.

To our knowledge, no previous study has examined long-term BWV from electronic smart scales, and only a few studies have modeled frequent weight data using TS methods. A recent study examining the effect of breaks in self-weighing on weight outcomes used a linear mixed model approach using time and weight as fixed predictor and response variables, respectively [37]. However, the use of linear modeling when examining BWV is not sensitive to the often-polynomial features of body weight trajectories. In another study, the authors compared differences in weekday and weekend body weights with longer-term weight changes [20]; however, the data were not detrended. Therefore, weekly weight patterns may potentially be sensitive to overall weight change (particularly in individuals with rapidly changing weight). In a study examining the effect of season on weight patterns across several countries, the authors fitted orthogonal polynomials to the weight data before conducting a detrending process, which may help isolate seasonal patterns from the overall trend (eg, loss or gain) of an individual, showing clear seasonal patterns across the year in different geographical regions [23]. Finally, in a recent study investigating within-week patterns of BWV in 80 adults, the authors took a comprehensive approach by applying nonparametric smoothing techniques (similar to this study) and removed the trend component of the TS using a moving average approach, reporting significant weekly patterns within a week characterized by weekend weight gain and weekday compensation [19]. Recently, we used the present methods to inform the description of weight fluctuation patterns across weeks, years, and holidays [1] and to investigate the associations between BWV and cardiometabolic health outcomes [2].

Strengths and Limitations

This study has several strengths. First, we developed our data processing methods from true rather than simulated data, thus increasing the validity of the analysis. Our simulation-imputation analysis was comprehensive, including the generation of 8000 missingness-simulated data sets in total with varying levels of missingness using both random and real-missingness informed simulations, which resulted in 80,000 imputed data sets produced using 10 univariate and multivariate algorithms. Next, we described and compared both linear and nonlinear approaches to estimating BWV under different conditions of missingness and reported the errors produced in the common case of missing data, which should inform the magnitude of errors expected from missing data estimations in future studies. Some limitations should also be addressed. First, all imputation methods were deterministic, although body weight seems to be a relatively stochastic (ie, randomly determined) process. The resultant effect is that imputation may reduce the variability by attempting to recognize predictive patterns that are not there. We recommend that consideration should be given to whether imputation is necessary. In some analyses, including instances where machine learning algorithms are employed, complete data are a necessity; therefore, imputation is required. Next, we did not have entirely complete data by which to test imputation, although we opted to use real rather than simulated data for external validity.

Conclusions

BWV potentially represents (1) a significant health risk and (2) a prognostic tool that is currently not well understood or well measured. This study evaluated the performance of various imputation methods applied to body weight data and presented a protocol for estimating BWV under varying amounts of missing data. We showed that structural modeling with a Kalman smoother and EWMA performed an imputation most effectively. However, in the case of estimating BWV, the imputations generally produced large underestimations due to the tendency to revert toward the mean. Furthermore, we demonstrated the errors associated with BWV estimates at varying levels of missing data, concluding that errors are small when using both linear and nonlinear methods even under high proportions of missingness. In future, the importance of both frequent measurement of body weight and consistent and appropriate methods of analyzing the data produced should be underlined in the study of BWV.

Acknowledgments

The authors wish to thank all the individuals who were involved in the collection of data at the University of Leeds, the University of Lisbon, and the Capital Region of Denmark. The NoHoW study received funding from the European Union's Horizon 2020 research and innovation programme (Grant agreement No. 643309) in addition to an Engineering and Physical Sciences Research Council (grant no: EP/R51171/1).

Authors' Contributions

JS, AL, SL, and BH were involved in the design of the NoHoW trial. JT, RO, and RS were involved in the conception of this study. JT and RO were involved in the development of the protocol and data analysis. JT was primarily responsible for writing the manuscript. All authors reviewed and edited the manuscript and approved the final version of the manuscript.

Conflicts of Interest

RJS consults for Slimming World via consulting Leeds, a wholly-owned subsidiary of the University of Leeds. All other authors have no conflicts of interest to declare.

Multimedia Appendix 1

Outlier detection limits based on physiological plausibility.

[\[DOCX File , 13 KB-Multimedia Appendix 1\]](#)

Multimedia Appendix 2

Detailed description of the data removal processes.

[\[DOCX File , 17 KB-Multimedia Appendix 2\]](#)

Multimedia Appendix 3

Illustrated examples of body weight imputation by all methods.

[\[DOCX File , 6111 KB-Multimedia Appendix 3\]](#)

Multimedia Appendix 4

Table of imputation performance by root mean square error.

[\[DOCX File , 16 KB-Multimedia Appendix 4\]](#)

Multimedia Appendix 5

Summary figures of imputation performance by mean absolute percentage error and mean absolute error.

[\[DOCX File , 109 KB-Multimedia Appendix 5\]](#)

Multimedia Appendix 6

Table of mean errors in body weight variability calculation following simulation and imputation.

[\[DOCX File , 16 KB-Multimedia Appendix 6\]](#)

References

1. Schreier G. The internet of things for personalized health. *Stud Health Technol Inform* 2014;200:22-31. [Medline: [24851958](#)]
2. Sheth A, Jaimini U, Yip HY. How will the internet of things enable augmented personalized health? *IEEE Intell Syst* 2018;33(1):89-97 [FREE Full text] [doi: [10.1109/MIS.2018.012001556](#)] [Medline: [29887765](#)]
3. Wu F, Wu T, Yuce M. An internet-of-things (IoT) network system for connected safety and health monitoring applications. *Sensors (Basel)* 2018 Dec 21;19(1):21 [FREE Full text] [doi: [10.3390/s19010021](#)] [Medline: [30577646](#)]
4. Dimitrov DV. Medical internet of things and big data in healthcare. *Healthc Inform Res* 2016 Jul;22(3):156-163 [FREE Full text] [doi: [10.4258/hir.2016.22.3.156](#)] [Medline: [27525156](#)]
5. Painter SL, Ahmed R, Hill JO, Kushner RF, Lindquist R, Brunning S, et al. What matters in weight loss? An in-depth analysis of self-monitoring. *J Med Internet Res* 2017 May 12;19(5):e160 [FREE Full text] [doi: [10.2196/jmir.7457](#)] [Medline: [28500022](#)]
6. Steinberg DM, Tate DF, Bennett GG, Ennett S, Samuel-Hodge C, Ward DS. The efficacy of a daily self-weighing weight loss intervention using smart scales and e-mail. *Obesity (Silver Spring)* 2013 Sep;21(9):1789-1797 [FREE Full text] [doi: [10.1002/oby.20396](#)] [Medline: [23512320](#)]
7. Valle CG, Deal AM, Tate DF. Preventing weight gain in African American breast cancer survivors using smart scales and activity trackers: a randomized controlled pilot study. *J Cancer Surviv* 2017 Feb;11(1):133-148 [FREE Full text] [doi: [10.1007/s11764-016-0571-2](#)] [Medline: [27631874](#)]
8. Vanwormer JJ, French SA, Pereira MA, Welsh EM. The impact of regular self-weighing on weight management: a systematic literature review. *Int J Behav Nutr Phys Act* 2008 Nov 4;5:54 [FREE Full text] [doi: [10.1186/1479-5868-5-54](#)] [Medline: [18983667](#)]
9. Oh T, Moon J, Choi S, Lim S, Park KS, Cho NH, et al. Body-weight fluctuation and incident diabetes mellitus, cardiovascular disease, and mortality: a 16-year prospective cohort study. *J Clin Endocrinol Metab* 2019 Mar 1;104(3):639-646. [doi: [10.1210/jc.2018-01239](#)] [Medline: [30500906](#)]
10. Nam GE, Cho KH, Han K, Han B, Cho SJ, Roh YK, et al. Impact of body mass index and body weight variabilities on mortality: a nationwide cohort study. *Int J Obes (Lond)* 2019 Feb;43(2):412-423. [doi: [10.1038/s41366-018-0079-0](#)] [Medline: [29777238](#)]

11. Kim MK, Han K, Park Y, Kwon H, Kang G, Yoon K, et al. Associations of variability in blood pressure, glucose and cholesterol concentrations, and body mass index with mortality and cardiovascular outcomes in the general population. *Circulation* 2018 Dec 4;138(23):2627-2637. [doi: [10.1161/CIRCULATIONAHA.118.034978](https://doi.org/10.1161/CIRCULATIONAHA.118.034978)] [Medline: [30571256](https://pubmed.ncbi.nlm.nih.gov/30571256/)]
12. Kodama S, Fujihara K, Ishiguro H, Horikawa C, Ohara N, Yachi Y, et al. Unstable bodyweight and incident type 2 diabetes mellitus: a meta-analysis. *J Diabetes Investig* 2017 Jul;8(4):501-509 [FREE Full text] [doi: [10.1111/jdi.12623](https://doi.org/10.1111/jdi.12623)] [Medline: [28083921](https://pubmed.ncbi.nlm.nih.gov/28083921/)]
13. Aucott LS, Philip S, Avenell A, Afolabi E, Sattar N, Wild S, Scottish Diabetes Research Network Epidemiology Group. Patterns of weight change after the diagnosis of type 2 diabetes in Scotland and their relationship with glycaemic control, mortality and cardiovascular outcomes: a retrospective cohort study. *BMJ Open* 2016 Jul 26;6(7):e010836 [FREE Full text] [doi: [10.1136/bmjopen-2015-010836](https://doi.org/10.1136/bmjopen-2015-010836)] [Medline: [27466237](https://pubmed.ncbi.nlm.nih.gov/27466237/)]
14. Bangalore S, Fayyad R, Laskey R, DeMicco DA, Messerli FH, Waters DD. Body-weight fluctuations and outcomes in coronary disease. *N Engl J Med* 2017 Apr 6;376(14):1332-1340. [doi: [10.1056/nejmoa1606148](https://doi.org/10.1056/nejmoa1606148)] [Medline: [28379800](https://pubmed.ncbi.nlm.nih.gov/28379800/)]
15. Welti LM, Beavers DP, Caan BJ, Sangi-Haghpeykar H, Vitolins MZ, Beavers KM. Weight fluctuation and cancer risk in postmenopausal women: the women's health initiative. *Cancer Epidemiol Biomarkers Prev* 2017 May;26(5):779-786 [FREE Full text] [doi: [10.1158/1055-9965.EPI-16-0611](https://doi.org/10.1158/1055-9965.EPI-16-0611)] [Medline: [28069684](https://pubmed.ncbi.nlm.nih.gov/28069684/)]
16. Lowe M, Feig E, Winter S, Stice E. Short-term variability in body weight predicts long-term weight gain. *Am J Clin Nutr* 2015 Nov;102(5):995-999 [FREE Full text] [doi: [10.3945/ajcn.115.115402](https://doi.org/10.3945/ajcn.115.115402)] [Medline: [26354535](https://pubmed.ncbi.nlm.nih.gov/26354535/)]
17. Feig EH, Lowe MR. Variability in weight change early in behavioral weight loss treatment: theoretical and clinical implications. *Obesity (Silver Spring)* 2017 Sep;25(9):1509-1515 [FREE Full text] [doi: [10.1002/oby.21925](https://doi.org/10.1002/oby.21925)] [Medline: [28845608](https://pubmed.ncbi.nlm.nih.gov/28845608/)]
18. Jimison H, Pavel M. Monitoring of Body Weight for Heart Failure Patients: Variability of Weight and Self-Reporting. In: *Proceedings of the 25th Annual International Conference of the IEEE Engineering in Medicine and Biology Society*. 2003 Presented at: IEMBS'03; September 17-21, 2003; Cancun, Mexico. [doi: [10.1109/iembs.2003.1280950](https://doi.org/10.1109/iembs.2003.1280950)]
19. Orsama A, Mattila E, Ermes M, van Gils M, Wansink B, Korhonen I. Weight rhythms: weight increases during weekends and decreases during weekdays. *Obes Facts* 2014;7(1):36-47 [FREE Full text] [doi: [10.1159/000356147](https://doi.org/10.1159/000356147)] [Medline: [24504358](https://pubmed.ncbi.nlm.nih.gov/24504358/)]
20. Racette SB, Weiss EP, Schechtman KB, Steger-May K, Villareal DT, Obert KA, et al. Influence of weekend lifestyle patterns on body weight. *Obesity (Silver Spring)* 2008 Aug;16(8):1826-1830 [FREE Full text] [doi: [10.1038/oby.2008.320](https://doi.org/10.1038/oby.2008.320)] [Medline: [18551108](https://pubmed.ncbi.nlm.nih.gov/18551108/)]
21. Turicchi J, O'Driscoll R, Horgan G, Duarte C, Palmeira AL, Larsen SC, et al. Weekly, seasonal and holiday body weight fluctuation patterns among individuals engaged in a European multi-centre behavioural weight loss maintenance intervention. *PLoS One* 2020;15(4):e0232152 [FREE Full text] [doi: [10.1371/journal.pone.0232152](https://doi.org/10.1371/journal.pone.0232152)] [Medline: [32353079](https://pubmed.ncbi.nlm.nih.gov/32353079/)]
22. Fahey MC, Klesges RC, Kocak M, Talcott GW, Krukowski RA. Seasonal fluctuations in weight and self-weighing behavior among adults in a behavioral weight loss intervention. *Eat Weight Disord* 2020 Aug;25(4):921-928. [doi: [10.1007/s40519-019-00707-7](https://doi.org/10.1007/s40519-019-00707-7)] [Medline: [31093925](https://pubmed.ncbi.nlm.nih.gov/31093925/)]
23. Mehrang S, Helander E, Chieh A, Korhonen I. Seasonal Weight Variation Patterns in Seven Countries Located in Northern and Southern Hemispheres. In: *38th Annual International Conference of the IEEE Engineering in Medicine and Biology Society*. 2016 Presented at: EMBC'16; August 16-20, 2016; Orlando, FL, USA. [doi: [10.1109/embc.2016.7591232](https://doi.org/10.1109/embc.2016.7591232)]
24. Faust L, Wang C, Hachen D, Lizardo O, Chawla NV. Physical activity trend extraction: a framework for extracting moderate-vigorous physical activity trends from wearable fitness tracker data. *JMIR Mhealth Uhealth* 2019 Mar 12;7(3):e11075 [FREE Full text] [doi: [10.2196/11075](https://doi.org/10.2196/11075)] [Medline: [30860488](https://pubmed.ncbi.nlm.nih.gov/30860488/)]
25. Catellier DJ, Hannan PJ, Murray DM, Addy CL, Conway TL, Yang S, et al. Imputation of missing data when measuring physical activity by accelerometry. *Med Sci Sports Exerc* 2005 Nov;37(11 Suppl):S555-S562 [FREE Full text] [doi: [10.1249/01.mss.0000185651.59486.4e](https://doi.org/10.1249/01.mss.0000185651.59486.4e)] [Medline: [16294118](https://pubmed.ncbi.nlm.nih.gov/16294118/)]
26. Hicks JL, Althoff T, Sosic R, Kuhar P, Bostjancic B, King AC, et al. Best practices for analyzing large-scale health data from wearables and smartphone apps. *NPJ Digit Med* 2019;2:45 [FREE Full text] [doi: [10.1038/s41746-019-0121-1](https://doi.org/10.1038/s41746-019-0121-1)] [Medline: [31304391](https://pubmed.ncbi.nlm.nih.gov/31304391/)]
27. Scott SE, Duarte C, Encantado J, Evans EH, Harjumaa M, Heitmann BL, et al. The NoHoW protocol: a multicentre 2x2 factorial randomised controlled trial investigating an evidence-based digital toolkit for weight loss maintenance in European adults. *BMJ Open* 2019 Sep 30;9(9):e029425 [FREE Full text] [doi: [10.1136/bmjopen-2019-029425](https://doi.org/10.1136/bmjopen-2019-029425)] [Medline: [31575569](https://pubmed.ncbi.nlm.nih.gov/31575569/)]
28. Shaffer JA, Diaz K, Alcántara C, Edmondson D, Krupka DJ, Chaplin WF, et al. An inexpensive device for monitoring patients' weights via automated hovering. *Int J Cardiol* 2014 Mar 15;172(2):e263-e264 [FREE Full text] [doi: [10.1016/j.ijcard.2013.12.123](https://doi.org/10.1016/j.ijcard.2013.12.123)] [Medline: [24508493](https://pubmed.ncbi.nlm.nih.gov/24508493/)]
29. Turicchi J. BodyWeight Imputation Validation Variability. GitHub. 2020. URL: <https://github.com/jaketuricchi/BodyWeight-Imputation-Validation-Variability> [accessed 2020-06-13]
30. Moritz S, Sardá A, Bartz-Beielstein T, Zaefferer M, Stork J. Comparison of different methods for univariate time series imputation in R. *ArXiv* 2015:- epub ahead of print [FREE Full text]
31. Rantou K, Karagrigoriou A, Vonta I. On Imputation Methods in Univariate Time Series. *Nonlinear Studies*. 2017. URL: <http://nonlinearstudies.com/index.php/mesa/article/view/1522> [accessed 2019-06-20]

32. Saris W. Very-low-calorie diets and sustained weight loss. *Obes Res* 2001 Nov;9(Suppl 4):295S-301S [FREE Full text] [doi: [10.1038/oby.2001.134](https://doi.org/10.1038/oby.2001.134)] [Medline: [11707557](https://pubmed.ncbi.nlm.nih.gov/11707557/)]
33. Sellahewa L, Khan C, Lakkunarajah S, Idris I. A systematic review of evidence on the use of very low calorie diets in people with diabetes. *Curr Diabetes Rev* 2017;13(1):35-46. [doi: [10.2174/1573399812666151005123431](https://doi.org/10.2174/1573399812666151005123431)] [Medline: [26435354](https://pubmed.ncbi.nlm.nih.gov/26435354/)]
34. Dériaz O, Tremblay A, Bouchard C. Non linear weight gain with long term overfeeding in man. *Obes Res* 1993 May;1(3):179-185 [FREE Full text] [doi: [10.1002/j.1550-8528.1993.tb00609.x](https://doi.org/10.1002/j.1550-8528.1993.tb00609.x)] [Medline: [16353352](https://pubmed.ncbi.nlm.nih.gov/16353352/)]
35. Leaf A, Antonio J. The effects of overfeeding on body composition: the role of macronutrient composition - a narrative review. *Int J Exerc Sci* 2017;10(8):1275-1296 [FREE Full text] [Medline: [29399253](https://pubmed.ncbi.nlm.nih.gov/29399253/)]
36. Bhaskaran K, Smeeth L. What is the difference between missing completely at random and missing at random? *Int J Epidemiol* 2014 Aug;43(4):1336-1339 [FREE Full text] [doi: [10.1093/ije/dyu080](https://doi.org/10.1093/ije/dyu080)] [Medline: [24706730](https://pubmed.ncbi.nlm.nih.gov/24706730/)]
37. Helander EE, Vuorinen A, Wansink B, Korhonen IK. Are breaks in daily self-weighing associated with weight gain? *PLoS One* 2014;9(11):e113164 [FREE Full text] [doi: [10.1371/journal.pone.0113164](https://doi.org/10.1371/journal.pone.0113164)] [Medline: [25397613](https://pubmed.ncbi.nlm.nih.gov/25397613/)]
38. Spratt M, Carpenter J, Sterne JA, Carlin JB, Heron J, Henderson J, et al. Strategies for multiple imputation in longitudinal studies. *Am J Epidemiol* 2010 Aug 15;172(4):478-487. [doi: [10.1093/aje/kwq137](https://doi.org/10.1093/aje/kwq137)] [Medline: [20616200](https://pubmed.ncbi.nlm.nih.gov/20616200/)]
39. Moritz S. Title Time Series Missing Value Imputation. GitHub. 2018. URL: <https://github.com/SteffenMoritz/imputeTS> [accessed 2019-06-20]
40. Hyndman R, Athanasopoulos G, Bergmeir C. Package 'Forecast'. The Comprehensive R Archive Network. 2020. URL: <https://cran.r-project.org/web/packages/forecast/forecast.pdf> [accessed 2019-06-20]
41. Torgo L. Package 'DMwR'. The Comprehensive R Archive Network. 2015. URL: <https://cran.r-project.org/web/packages/DMwR/DMwR.pdf> [accessed 2020-08-13] [WebCite Cache ID <https://cran.r-project.org/web/packages/DMwR/DMwR.pdf>]
42. Stekhoven DJ, Bühlmann P. MissForest--non-parametric missing value imputation for mixed-type data. *Bioinformatics* 2012 Jan 1;28(1):112-118. [doi: [10.1093/bioinformatics/btr597](https://doi.org/10.1093/bioinformatics/btr597)] [Medline: [22039212](https://pubmed.ncbi.nlm.nih.gov/22039212/)]
43. Buuren S, Groothuis-Oudshoorn K. mice: multivariate imputation by chained equations in R. *J Stat Soft* 2011;45(3):- [doi: [10.18637/jss.v045.i03](https://doi.org/10.18637/jss.v045.i03)]
44. Gnauck A. Interpolation and approximation of water quality time series and process identification. *Anal Bioanal Chem* 2004 Oct;380(3):484-492. [doi: [10.1007/s00216-004-2799-3](https://doi.org/10.1007/s00216-004-2799-3)] [Medline: [15365680](https://pubmed.ncbi.nlm.nih.gov/15365680/)]
45. Duan Q, Djidjeli K, Price W, Twizell E. Weighted rational cubic spline interpolation and its application. *J Comput Appl Math* 2000 May;117(2):121-135. [doi: [10.1016/s0377-0427\(99\)00336-2](https://doi.org/10.1016/s0377-0427(99)00336-2)]
46. Lepot M, Aubin J, Clemens F. Interpolation in time series: an introductory overview of existing methods, their performance criteria and uncertainty assessment. *Water* 2017 Oct 17;9(10):796. [doi: [10.3390/w9100796](https://doi.org/10.3390/w9100796)]
47. Perillo GM, Piccolo MC. An interpolation method for estuarine and oceanographic data. *Comput Geosci* 1991 Jan;17(6):813-820. [doi: [10.1016/0098-3004\(91\)90062-i](https://doi.org/10.1016/0098-3004(91)90062-i)]
48. Jalles JT. Structural time series models and the kalman filter: a concise review. *SSRN Journal* 2009 Jun:- [FREE Full text] [doi: [10.2139/ssrn.1496864](https://doi.org/10.2139/ssrn.1496864)]
49. Tusell F. Multiple Imputation of Time Series With an Application to the Construction of Historical Price Indices. *Semantic Scholar*. 2019. URL: <https://pdfs.semanticscholar.org/03d9/7350371f8199a5d7f5d028681e8523b50c56.pdf> [accessed 2019-06-26]
50. Friedman J. A Variable Span Smoother. SLAC National Accelerator Laboratory. 1984. URL: <https://www.slac.stanford.edu/pubs/slacpubs/3250/slac-pub-3477.pdf> [accessed 2019-06-26]
51. Shah JS, Rai SN, DeFilippis AP, Hill BG, Bhatnagar A, Brock GN. Distribution based nearest neighbor imputation for truncated high dimensional data with applications to pre-clinical and clinical metabolomics studies. *BMC Bioinformatics* 2017 Feb 20;18(1):114 [FREE Full text] [doi: [10.1186/s12859-017-1547-6](https://doi.org/10.1186/s12859-017-1547-6)] [Medline: [28219348](https://pubmed.ncbi.nlm.nih.gov/28219348/)]
52. Saito Y, Takahashi O, Arioka H, Kobayashi D. Associations between body fat variability and later onset of cardiovascular disease risk factors. *PLoS One* 2017;12(4):e0175057 [FREE Full text] [doi: [10.1371/journal.pone.0175057](https://doi.org/10.1371/journal.pone.0175057)] [Medline: [28369119](https://pubmed.ncbi.nlm.nih.gov/28369119/)]
53. Lee J, Kawakubo K, Kobayashi Y, Mori K, Kasihara H, Tamura M. Effects of ten year body weight variability on cardiovascular risk factors in Japanese middle-aged men and women. *Int J Obes Relat Metab Disord* 2001 Jul;25(7):1063-1067. [doi: [10.1038/sj.ijo.0801633](https://doi.org/10.1038/sj.ijo.0801633)] [Medline: [11443507](https://pubmed.ncbi.nlm.nih.gov/11443507/)]
54. Nakanishi N, Nakamura K, Suzuki K, Tataka K. Effects of weight variability on cardiovascular risk factors; a study of nonsmoking Japanese male office workers. *Int J Obes Relat Metab Disord* 2000 Sep;24(9):1226-1230. [doi: [10.1038/sj.ijo.0801389](https://doi.org/10.1038/sj.ijo.0801389)] [Medline: [11033995](https://pubmed.ncbi.nlm.nih.gov/11033995/)]
55. French S, Jeffery R, Folsom A, Williamson D, Byers T. Relation of weight variability and intentionality of weight loss to disease history and health-related variables in a population-based sample of women aged 55-69 years. *Am J Epidemiol* 1995 Dec 15;142(12):1306-1314. [doi: [10.1093/oxfordjournals.aje.a117598](https://doi.org/10.1093/oxfordjournals.aje.a117598)] [Medline: [7503051](https://pubmed.ncbi.nlm.nih.gov/7503051/)]
56. Folsom AR, French SA, Zheng W, Baxter JE, Jeffery RW. Weight variability and mortality: the Iowa women's health study. *Int J Obes Relat Metab Disord* 1996 Aug;20(8):704-709. [Medline: [8856391](https://pubmed.ncbi.nlm.nih.gov/8856391/)]
57. Jacoby W. *Electoral Stud* 2000 Dec;19(4):577-613. [doi: [10.1016/S0261-3794\(99\)00028-1](https://doi.org/10.1016/S0261-3794(99)00028-1)]

58. R: The R Stats Package. The R Language - Seminar for Statistics. 2019. URL: <https://stat.ethz.ch/R-manual/R-devel/library/stats/html/00Index.html> [accessed 2019-07-08]
59. Siangphoe U, Wheeler DC. Evaluation of the performance of smoothing functions in generalized additive models for spatial variation in disease. *Cancer Inform* 2015;14(Suppl 2):107-116 [FREE Full text] [doi: [10.4137/CIN.S17300](https://doi.org/10.4137/CIN.S17300)] [Medline: [25983545](https://pubmed.ncbi.nlm.nih.gov/25983545/)]
60. Chen C, Twycross J, Garibaldi JM. A new accuracy measure based on bounded relative error for time series forecasting. *PLoS One* 2017;12(3):e0174202 [FREE Full text] [doi: [10.1371/journal.pone.0174202](https://doi.org/10.1371/journal.pone.0174202)] [Medline: [28339480](https://pubmed.ncbi.nlm.nih.gov/28339480/)]
61. Liu B, Yu M, Graubard BI, Troiano RP, Schenker N. Multiple imputation of completely missing repeated measures data within person from a complex sample: application to accelerometer data in the national health and nutrition examination survey. *Stat Med* 2016 Dec 10;35(28):5170-5188 [FREE Full text] [doi: [10.1002/sim.7049](https://doi.org/10.1002/sim.7049)] [Medline: [27488606](https://pubmed.ncbi.nlm.nih.gov/27488606/)]
62. Borghese MM, Borgundvaag E, McIsaac MA, Janssen I. Imputing accelerometer nonwear time in children influences estimates of sedentary time and its associations with cardiometabolic risk. *Int J Behav Nutr Phys Act* 2019 Jan 17;16(1):7 [FREE Full text] [doi: [10.1186/s12966-019-0770-0](https://doi.org/10.1186/s12966-019-0770-0)] [Medline: [30654817](https://pubmed.ncbi.nlm.nih.gov/30654817/)]

Abbreviations

ARIMA: AutoRegressive Integrated Moving Average

ASSRKS: ARIMA state-space representation and Kalman smoothing

BWV: body weight variability

EWMA: exponentially weighted moving average

KNN: K-nearest neighbors

LOESS: locally estimated scatterplot smoothing

MAR: missing at random

MCAR: missing completely at random

NLMD: nonlinear mean deviation

PMM: predictive means matching

RCT: randomized controlled trial

RF: random forest

RMSE: root mean square error

RPM: real patterns of missingness

SMKS: structural modeling with Kalman smoothing

TS: time series

WV: weight variability

Edited by G Eysenbach; submitted 27.01.20; peer-reviewed by V Gupta, R Bajpai; comments to author 12.06.20; accepted 25.06.20; published 11.09.20

Please cite as:

Turicchi J, O'Driscoll R, Finlayson G, Duarte C, Palmeira AL, Larsen SC, Heitmann BL, Stubbs RJ

Data Imputation and Body Weight Variability Calculation Using Linear and Nonlinear Methods in Data Collected From Digital Smart Scales: Simulation and Validation Study

JMIR Mhealth Uhealth 2020;8(9):e17977

URL: <http://mhealth.jmir.org/2020/9/e17977/>

doi: [10.2196/17977](https://doi.org/10.2196/17977)

PMID:

©Jake Turicchi, Ruairi O'Driscoll, Graham Finlayson, Cristiana Duarte, A L Palmeira, Sofus C Larsen, Berit L Heitmann, R James Stubbs. Originally published in JMIR mHealth and uHealth (<http://mhealth.jmir.org>), 11.09.2020. This is an open-access article distributed under the terms of the Creative Commons Attribution License (<https://creativecommons.org/licenses/by/4.0/>), which permits unrestricted use, distribution, and reproduction in any medium, provided the original work, first published in JMIR mHealth and uHealth, is properly cited. The complete bibliographic information, a link to the original publication on <http://mhealth.jmir.org/>, as well as this copyright and license information must be included.