



Development of a three-tier *in vitro* system, using Caco-2 cells, to assess the effects of lactate on iron uptake and transport from rye bread following *in vitro* digestion

Bering, Stine Brandt; Bukhave, Klaus; Henriksen, Marianne; Sandström, Brittmarie; Pariagh, Sandra; Fairweather-Tait, Susan J.; Lund, Elizabeth K.

Published in:
Journal of the Science of Food and Agriculture

DOI:
[10.1002/jsfa.2637](https://doi.org/10.1002/jsfa.2637)

Publication date:
2006

Document version
Early version, also known as pre-print

Citation for published version (APA):
Bering, S. B., Bukhave, K., Henriksen, M., Sandström, B., Pariagh, S., Fairweather-Tait, S. J., & Lund, E. K. (2006). Development of a three-tier *in vitro* system, using Caco-2 cells, to assess the effects of lactate on iron uptake and transport from rye bread following *in vitro* digestion. *Journal of the Science of Food and Agriculture*, 86(14), 2438-2444. <https://doi.org/10.1002/jsfa.2637>

1 **Development of a three tier *in vitro* system, using Caco-2 cells, to assess the effects**
2 **of lactate on iron uptake and transport from rye bread following *in vitro* digestion.**

3

4 Stine Bering¹, Klaus Bukhave¹, Marianne Henriksen^{1†}, Brittmarie Sandström^{1¤}, Sandra
5 Pariagh², Susan J. Fairweather-Tait², and Elizabeth K. Lund^{2#}.

6

7 ¹Department of Human Nutrition, Centre for Advanced Food Studies, The Royal
8 Veterinary and Agricultural University, Frederiksberg, Denmark.

9 ²Institute of Food Research, Norwich Research Park, Colney, Norwich, United
10 Kingdom.

11

12

13 Running title: Effects of lactate on iron absorption in 3-tier *in vitro* digestion/Caco-2
14 model

[†] Present working address: Nycomed, International Medical Affairs, 4000 Roskilde, Denmark.

[¤] Deceased 22 October 2002.

[#] Correspondence to: EK Lund, Institute of Food Research, Norwich Research Park, Colney, Norwich NR4 7UA, United Kingdom. Tel: +44 1603 255347. Fax: +44 1603 255167. E-mail: liz.lund@bbsrc.ac.uk.

ABSTRACT

1
2 We have developed a 3-tier Caco-2 cell system to simultaneously assess iron
3 dialyzability, uptake and transport across the Caco-2 monolayer from an *in vitro*
4 digested food matrix. The effect of lactate (0–200 mmol L⁻¹) on iron absorption from
5 rye bread subjected to simulated peptic (pH 5.5) and pancreatic digestion (pH 6.5) was
6 investigated to model absorption pre- and post the sphincter of Oddi. Lactate increased
7 dialyzability (11.8%, $P < 0.05$) in peptic digests whereas it reduced it in pancreatic
8 digests (4.9%, $P < 0.001$). Iron uptake from the peptic digests was in the region 39–76
9 pmol mg protein⁻¹ whereas it decreased from 281 to 51 pmol mg protein⁻¹ in pancreatic
10 digests. Iron transport was calculated for the peptic digests from ¹⁴C-polyethylene
11 glycol movement, and only at 200 mmol L⁻¹ lactate was there any detectable
12 transcellular transport (180 pmol mg protein⁻¹, $P < 0.05$). Iron absorption was positively
13 correlated to dialyzable iron for both digests ($R^2 = 0.48$ and $R^2 = 0.41$, respectively, $P <$
14 0.01), and the effect of lactate was therefore associated mainly with iron
15 bioaccessibility. The 3-tier system showed the potential to obtain detailed insight into
16 each step involved in iron transport across the monolayer from a food mixture.

17

18

19

20 Keywords: Iron bioavailability, Caco-2, *in vitro* digestion, lactate, phytate

INTRODUCTION

Predictive methods for assessing iron bioavailability from complex mixtures are useful tools for testing the modulating effect of dietary factors. A number of steps influence how much iron enters the body: (a) iron solubility in the food digest, (b) the concentration of iron that is in contact with the epithelial layer, its valency, and whether it is bound to small organic ions that inhibit or enhance release from the food matrix, (c) the mucosal “setting”, which is dependent on the iron status of the body and regulates the efficiency of enterocyte uptake and exit of iron from the cell into the systemic circulation, and (d) modulators of paracellular transfer.¹

The Caco-2 cell model has been used to assess iron absorption from complex foods subjected to simulated digestion prior to adding a soluble fraction to the cell monolayer on a semi-permeable membrane, which permits the measurement of both uptake and transport across the membrane.^{2,3} Glahn *et al.*⁴ measure iron uptake into the cells by inserting a dialysis membrane above a cell monolayer grown on the base of the cell culture well, simulating the mucous layer that protects the cells from the digestive enzymes. One disadvantage of this method is that it cannot be used to predict exit from the cell into the plasma. Also, the fact that the efflux pathway is blocked may alter the uptake rate of iron into the cell. Dietary iron absorption is often correlated with the size of the iron stores, indicating that the stores regulator, which modulates intestinal iron absorption in response to the level of body iron stores,⁵ is an important factor in predicting iron bioavailability. Extending the Caco-2 cell model to a 3-tier system, including both a dialysis membrane and the epithelial monolayer grown on a semi-permeable membrane, has the potential to simulate a range of iron status scenarios in

1 the model, for example, by adding transferrin with various degrees of iron saturation⁶ in
2 the basolateral chamber or the recently identified regulator of iron absorption, hepcidin.⁷
3
4 Predicting iron bioavailability from a food matrix is difficult, as it depends on several
5 factors associated with food composition and structure. In particular, phytate and
6 polyphenols are significant inhibitors of iron bioavailability.^{8,9,10} Fermentation of
7 vegetables and cereals is known to increase nonheme iron absorption, possibly due to
8 the production of small organic acids.^{11,12,13} Suggested mechanisms for this effect
9 include the lowering of pH and increased buffering capacity, which may hinder or delay
10 the formation of less soluble compounds,¹¹ activation of phytases,¹⁰ chelation of iron
11 with organic acids, hindering both complex binding to phytate and precipitation in the
12 gut,¹² and finally the delayed gastric emptying rate caused by the organic acids, which
13 may increase exposure time of iron to the gut.^{14,15}
14
15 The aim of the current study was to assess the feasibility of using a 3-tier Caco-2 cell
16 system using *in vitro* digestion in the tier above a dialysis membrane and measuring
17 iron uptake and transport across the monolayer. We assessed the suitability of this
18 technique by investigating the effect of different concentrations of lactate, on iron
19 absorption from a phytate rich meal using a food matrix of rye bread. Levels equivalent
20 to those achieved during fermentation of sourdough and sauerkraut^{16,17} were selected so
21 as to assess whether the increased iron absorption from fermented vegetables and
22 cereals seen in humans related to the presence of organic acids. We chose to use bread
23 as a typical model food matrix to test in the system as this would be closer to the
24 envisaged end use compared to a simple buffer; but then to add different concentrations
25 of lactate to the bread, rather than ferment the bread, so that the phytate content

1 remained unchanged and to test only one variable in the system. It is known that phytate
2 influences iron uptake into Caco-2 cells independently of any effect on dialyzability.¹⁸
3 As iron is primarily absorbed in the duodenum and the most proximal part of jejunum¹⁹
4 the study was set up to measure iron absorption from a peptic (pH 5.5) and a pancreatic
5 (pH 6.5) *in vitro* digest, corresponding to the digestion conditions in the lumen of the
6 proximal duodenum and jejunum respectively.²⁰

MATERIALS AND METHODS

Chemicals

Unless otherwise stated, all chemicals were purchased from Sigma-Aldrich (St. Louis, MO) or BDH Laboratory Supplies (Dorset, UK).

Cell Culture

Caco-2 cells were obtained from the European Collection of Cell Cultures (Wiltshire, UK). Cells at passage 47 were seeded at a density of 10^4 cells cm^{-2} onto 6-well Transwell polycarbonate membranes with a pore size of $0.4 \mu\text{m}$ and an area of 4.7cm^2 (Costar Corp., Cambridge, MA) and grown at 37°C in an atmosphere of 5% CO_2 in standard growth media: Dulbecco's Modified Eagle Medium (Sigma D-6429) supplemented with 10% fetal bovine serum, 1% non-essential amino acids, 1% L-glutamine, 100U mL^{-1} penicillin and $100 \mu\text{g mL}^{-1}$ streptomycin. Culture media was changed every 2–3 days. Iron absorption studies were conducted 19 days post seeding. These conditions were based on preliminary studies showing that at this time maximal iron transport had been reached and high transepithelial electrical resistance (TEER) readings were consistently measured.

Preparation of the 3-tier system

The membranes were removed from 12 mm transwell inserts (Costar), which instead were fitted with a dialysis membrane (cut-off 12-14 kDa, Spectra/Por 2, Spectrum Laboratories, Inc., Rancho Dominguez, CA), fixed by a silicone ring (14 mm internal diameter, purchased locally). The inserts were sterilized in 70% ethanol and washed in sterile water before use. The inserts were placed above the 24 mm transwell membranes (6-well plates) by use of insert rings (23 mm internal diameter, 36 mm external diameter, 0.5 mm high, polytetrafluoroethylene), thereby creating the 3-tier system presented in Fig 1.

1 ***In vitro* digestion**

2 Samples of 50 mg mL⁻¹ rye bread solutions (2.85 μmol inositol phosphates (IP)₃₋₆ mg
3 dry matter⁻¹, containing 6% IP₃, 7% IP₄, 14% IP₅, and 73% IP₆) were prepared by
4 mixing 200 mg freeze-dried, homogenized rye bread in 120 mmol L⁻¹ NaCl and adding
5 L-lactic acid to a final concentration of 0–200 mmol L⁻¹. Samples were spiked with 900
6 kBq ⁵⁵FeCl₃ (Specific activity 717 MBq mg⁻¹, PerkinElmer Life Sciences, Inc., Boston,
7 MA) and equilibrated for 10 min. The pH was adjusted to 2.0 (with 2.0 mol L⁻¹ HCl)
8 and the volume was made up to 4.0 mL prior to the addition of 0.2 mL pepsin solution
9 (40 mg mL⁻¹ porcine pepsin, 600–1,800 units mg protein⁻¹, in 0.1 mol L⁻¹ HCl), and the
10 samples were incubated 1 h at 37°C (200 rpm) in an incubator (Innova 4400, Incubator
11 Shaker, New Brunswick Scientific Co., Inc., Edison, NJ). After the pepsin digestion the
12 samples were divided into two. In the first 2.0 mL, the pH was raised to 5.5 by dropwise
13 addition of 5.0 mol L⁻¹ NaOH, and the volume adjusted to 2.9 mL with 120 mol L⁻¹
14 NaCl. These digests were stored at -20°C until iron absorption experiments. To the final
15 2.0 mL, 0.5 mL pancreatin-bile solution (0.4 mg mL⁻¹ porcine pancreatin, 4 × USP
16 specifications, and 2.4 mg mL⁻¹ porcine bile extract in 120 mmol L⁻¹ NaCl) was added,
17 and the pH raised to 6.5 by dropwise addition of saturated NaHCO₃. The volume was
18 adjusted to 2.9 mL with 120 mmol L⁻¹ NaCl. These digests were transferred directly to
19 the 3-tier system for iron absorption experiments.

20 **Iron uptake and transport by Caco-2 cells**

21 Immediately before the pancreatic digestion period, medium was removed from the
22 cells and they were washed with 2 × 2 mL Hank's Balanced Salt Solution (HBSS), pH
23 6.5. Then 1.5 mL and 1.0 mL HBSS, pH 6.5 were added to the cell and basolateral
24 compartments, respectively. The transwell inserts with dialysis membranes were placed
25 above the cell monolayers and 0.5 mL of the pancreatic digests was placed in these

1 inserts. The plates and residuals of the intestinal digests (control for determination of
2 total soluble iron in the food digests) were incubated for 2 h at 37°C (65 rpm) in an
3 Innova 4400 incubator, then the digests, the dialysates and the basolateral solutions
4 were collected for determination of ⁵⁵Fe. Non-absorbed iron was removed from the cell
5 layers according to Glahn *et al.*²¹ Briefly, the cell layers were washed in 2 × 2 mL
6 “rinse” solution (140 mmol L⁻¹ NaCl, 5 mmol L⁻¹ KCl, and 10 mmol L⁻¹ piperazine-N-
7 N’-bis(2-ethanesulfonic acid) (PIPES), incubated 10 min with 2 mL “removal” solution
8 (rinse solution with an additional 1 mmol L⁻¹ bathophenanthroline disulfonic acid and 5
9 mmol L⁻¹ sodium hydrosulfite) and washed with 2 × 2 mL rinse solution. Finally, the
10 cells were harvested with 1.5 mL, 200 mmol L⁻¹ NaOH for determination of ⁵⁵Fe and
11 protein. Absorption studies with the peptic digests were performed in a similar manner.

12 **Assessment of paracellular transport**

13 After the pepsin digestion and the subsequent division of samples in two, 65 kBq ¹⁴C-
14 polyethylene glycol (PEG) 4000 (Specific activity 581 MBq g⁻¹, Amersham Pharmacia
15 Biotech, Buckinghamshire, UK) was added to each tube to assess paracellular transport
16 across the monolayer.

17 **Analyses**

18 Activities of ⁵⁵Fe and ¹⁴C-PEG was determined by dual isotope liquid scintillation
19 counting of samples in aqueous solution with 90% Quicksafe A (Zinsser Analytic
20 GmbH, Frankfurt, Germany) in a Tri-Carb 2700TR (Packard Instruments, Meriden,
21 CT). The scintillation counting was performed with corrections for quenching and
22 window settings 0–10 and 12–156 keV for ⁵⁵Fe and ¹⁴C-PEG, respectively. Cellular
23 protein was determined using the Bicinchoninic Acid Protein Assay Kit (Pierce
24 Biotechnology, Rockford, IL). Total soluble iron was determined as described by
25 Kapsokefalou and Miller.²² Briefly, reducing protein precipitant solution (200 µL) was

1 added to 400 μ L aliquots of each control digest sample. Samples were held overnight at
2 room temperature. Subsequently they were centrifuged at $2575 \times g$ for 10 min. Aliquots
3 of the supernatants (100 μ L in duplicate) were transferred to a 96-well plate and 200 μ L
4 N-(2-hydroxyethyl)piperazine-N'-(2-ethanesulfonic acid) (HEPES) buffer pH 9.9 and
5 25 μ L ferrozine solution were added to each well. Absorbance (570 nm) was measured
6 after 1 h incubation, and sample iron concentrations were calculated from data
7 generated from standards. The content of phytate in the rye bread was measured as
8 individual IP₃₋₆ by high-performance ion chromatography.²³ The quantities of total
9 dialyzed iron, iron uptake and transport by the cells were calculated from the specific
10 activity of ⁵⁵Fe (amount of radioactivity per mol of soluble iron) in the digest control
11 samples (stationary system in which no iron has been removed or entered) and the
12 activity of ⁵⁵Fe measured in the digests, dialysates, cells and transport solutions of the 3-
13 tier system. The amount of iron in the dialysate is given as nanomoles per litre and
14 converted to percentage of the initial concentration in the digest. Iron uptake and
15 transport are given as picomoles per milligram of cell protein. The percentage of iron
16 transported paracellularly from the pepsin digests was then calculated from the
17 proportion of ¹⁴C-PEG in the dialysate which crossed the epithelial layer, with the
18 assumption 'tight junctions' are equally permeable to iron and PEG

19 **Statistical analysis**

20 For each food sample four replicates were made with independent digests and plates for
21 each replicate and data given as mean \pm SEM, $n = 4$. The effects of lactate or iron content
22 on iron movement between compartments were assessed by ANOVA with Bonferroni
23 post test and linear regression analysis of all data points using Prism 3.0 (GraphPad
24 Prism version 3.00 for Windows, GraphPad Software, San Diego, CA, USA). Means
25 were considered significantly different for $P < 0.05$.

RESULTS

Effects of lactate on soluble and dialyzable iron

Following the pepsin digestion the concentration of soluble iron in the digest was $8.2 \pm 1.2 \mu\text{mol L}^{-1}$ while the equivalent concentration following the pancreatin digestion was significantly higher, $11.2 \pm 1.1 \mu\text{mol L}^{-1}$ ($P < 0.001$), with no effect of lactate on these parameters. The concentrations of iron in the apical compartment below the dialysis membrane (dialysate) after 2 h, and the percentage of the total amount of iron dialyzed (sum of iron in the apical, cell, and basolateral compartment) relative to the total iron in the 3-tier system (sum of iron in the digest, apical, cell, and basolateral compartment) are shown in Fig 2. The amount of iron dialyzed from the peptic digests increased significantly from 11.9% to 23.7% ($P < 0.05$) with increase in lactate from 10 to 200 mmol L^{-1} , showing significant correlation with lactate concentration ($R^2 = 0.49$, $P < 0.005$). In contrast, following the pancreatin digestion, lactate (200 mmol L^{-1}) caused a significant reduction in the percentage iron dialyzed from 6.9% to 2.0% ($P < 0.001$) with an inverse relationship between dialyzable iron and lactate concentration ($R^2 = 0.51$, $P < 0.001$).

Effects of lactate on iron uptake

Iron uptake into the cells over the 2 h in which the pepsin digestion was carried out in the upper chamber was in the region of 39 to 76 $\text{pmol mg protein}^{-1}$ in the presence of 0 to 200 mmol L^{-1} lactate in the digests (1.2 to 2.8% of the total soluble iron) with no effect of increasing lactate concentration (Fig 3). During the pancreatin digestion stage, iron uptake decreased from 228 to 81 $\text{pmol mg protein}^{-1}$ with an increase in lactate concentration from 0 to 10 mmol L^{-1} , a decrease from 4.9% to 1.7% of the total soluble iron in the system ($P < 0.001$). Further reductions in uptake with increasing lactate

1 concentration occurred, so that at 200 mmol L⁻¹ only 0.2% of the iron in the system was
2 taken up by the cells (Fig 3).

3 **Effects of lactate on iron transport**

4 During the pepsin digestion phase the amount of iron in the basolateral compartment
5 increased with increasing lactate concentrations such that twice as much iron crossed
6 the epithelial layer in the presence of 200 mmol L⁻¹ lactate as when no lactate was
7 present. The amount of iron reaching the basolateral side was proportional to dialyzable
8 iron concentrations ($R^2 = 0.87$, $P < 0.001$) but much of this transported iron could be
9 accounted for by paracellular transport as estimated using the ¹⁴C-PEG levels in the
10 dialysate. Overall $15.3 \pm 1.8\%$ ($n = 20$) of the ¹⁴C-PEG crossed the dialysis membrane
11 during the peptic incubation period. This compares to $12.0 \pm 1.2\%$ ($n = 20$) of the
12 labelled iron added to the food matrix. From the relative concentrations of ⁵⁵Fe and ¹⁴C-
13 PEG in the dialysate we calculated the amount of transfer across the Caco-2 cell layer,
14 which could be assigned as paracellular transport and by difference the amount that was
15 transported transcellularly. Only at 200 mmol L⁻¹ lactate ($0.9 \mu\text{mol iron L}^{-1}$ dialysate)
16 was there any significant transcellular transport ($180 \text{ pmol mg protein}^{-1}$, $P < 0.05$). The
17 total iron uptake (total iron crossing the apical membrane) can be calculated by adding
18 this transcellular transport to the amount of iron uptake into the cell at 2 h. This
19 calculation would then suggest that during the peptic digestion there is a positive linear
20 relationship between dialyzable iron and total iron uptake ($R^2 = 0.48$, respectively, $P <$
21 0.01), as shown in Fig 4.

22 Following the 2 h pancreatin digestion phase only $53 \text{ pmol iron mg protein}^{-1}$ was
23 transported to the basolateral side with no effect of lactate. It was not possible to
24 calculate the relative impacts of paracellular and transcellular iron transport as,
25 following the addition of bile acids and pancreatin, only a negligible amount of ¹⁴C-

1 PEG was able to cross the dialysis membrane, $0.67 \pm 0.14\%$ ($n = 20$), although $2.6 \pm$
2 0.2% ($n = 20$) of iron was dialysed. Iron absorption in relation to dialyzable iron is
3 shown for the pancreatic digests in Fig 4 as well, but these absorption values only
4 includes uptake rates, as the transcellular transport was not determined. The transport
5 was however minor in these digests and not influenced by lactate concentration, so that
6 overall there was a positive linear relationship between dialyzable iron and total iron
7 uptake during the pancreatin digestion step as well ($R^2 = 0.41$, $P < 0.01$). During the
8 pancreatic digestion, at the higher pH (6.5 v. 5.5) a higher fraction of the dialyzed iron
9 was taken up into the cells than during the pepsin digestion step (Fig 4).

10

DISCUSSION

1
2 The use of the 3-tier Caco-2 cell system to allow measurement of soluble and dialyzable
3 iron together with iron uptake and transport, all in one experiment provides a valuable
4 and novel approach to the assessment of bioavailability, and offers a further refinement
5 of the model developed by Glahn *et al.*⁴ A second novel aspect of this study is the
6 experimental determination of what happens to iron when food leaves the stomach,
7 before it is mixed with pancreatic secretions at the sphincter of Oddi. The upper part of
8 the duodenum is recognized to be the area of maximal expression of brush-border
9 associated divalent metal transporter (DMT1) activity, especially following iron
10 deprivation.²⁴ The residence time of material in the duodenum is variable but
11 comparatively short following a meal, but as the free iron is probably still soluble due to
12 the low pH, and as food may empty from the stomach over a period of several hours, the
13 cells covering the duodenal wall will be exposed to pepsin digested food for a
14 prolonged period, and a significant part of the dietary iron could be taken up here.
15 For molecules to cross the mucous layer they must be present in low molecular weight
16 hydrophilic forms. In the 3-tier system this step is assessed by analyzing the proportion
17 of the soluble iron present in the food matrix that crosses the dialysis membrane. This
18 dialyzable iron will depend on the pH of the food matrix,²⁵ phytate content and the
19 presence of small organic acids such as citric acid and ascorbic acid,²⁶ and probably also
20 the lactate content, as investigated in our study.

21

22 The addition of lactate (0–200 mmol L⁻¹) had no effect on the soluble iron content of the
23 food matrix in either the peptic (pH 5.5) or pancreatic (pH 6.5) digests. However, the
24 presence of increasing concentrations of lactate increased the amount of iron dialyzed
25 from peptic digests, leading to concentrations of iron within the dialysate in the region

1 of $0.9 \mu\text{mol L}^{-1}$. In contrast, following adjustment to pH 6.5 and digestion with
2 pancreatin-bile, dialyzable iron concentration was reduced to $0.1 \mu\text{mol L}^{-1}$, and in this
3 situation lactate further reduced the concentrations of dialyzable iron, presumably by
4 increasing the amount of iron complexed into particles larger than the molecular weight
5 cut-off of the dialysis membrane while still being effectively soluble. The improved
6 dialysability of iron, at pH 5.5, on addition of lactate may reflect competition between
7 the phytate naturally present in the rye bread and the lactate as previously suggested by
8 Salovaara *et al.*²⁷ The concentration of iron in the dialysates in these experiments is
9 therefore more than 2 orders of magnitude less than those routinely used to study
10 transport kinetics.^{28,29} Therefore, saturation of key transporter activity is unlikely, and
11 the linear relationship between the concentration in the dialysate and uptake into the cell
12 reported here would be predicted, particularly as phytate concentrations were
13 standardised. Most food matrices used previously in Caco-2 experiments to assess
14 nonheme iron absorption have a total nonheme iron content in the region of $8\text{--}33 \mu\text{mol}$
15 L^{-1} and a dialysate concentration of $0.5\text{--}4 \mu\text{mol L}^{-1}$,^{2,4,30} a more physiologically
16 meaningful range for the luminal content in the proximal small intestine and similar to
17 those used in the current study. A linear relationship between dialyzed iron and apparent
18 absorption is seen for both peptic and pancreatic digests (Fig 4). This also explains why
19 low concentrations of lactate ($< 50 \text{mmol L}^{-1}$) decreased iron absorption, as less iron
20 was dialyzed from these samples (% iron dialyzed, Fig 2) than from samples without
21 lactate. The inhibitory effect of lactate on iron uptake from the pancreatic digests
22 corresponds well with the inhibitory effect of lactate on iron uptake in Caco-2 cells
23 described previously^{31,32} using solutions of lactate and iron at pH 6.8 and 7,
24 respectively, and our results would suggest that the inhibitory effect of lactate may be
25 associated mainly with a decrease in iron bioaccessibility, reflected in our study as

1 dialyzability, rather than an effect on solubility and therefore a lower availability for
2 absorption.

3 In the case of the peptic digest (pH 5.5) the amount of iron uptake into the cell does not
4 correlate with either the concentration in the dialysate or the basolateral media. This
5 might suggest that intracellular iron is not always a good indicator of bioavailability as
6 has been suggested previously.¹⁸ The only significant positive effect of lactate on iron
7 absorption from the peptic digest was seen at the highest lactate concentration (200
8 mmol L⁻¹). This concentration is in the upper range of what is seen in lactic acid
9 fermented foods that are high in lactate,^{33,16,17} and taking into consideration the 2–3 fold
10 dilution of the food by gastric and intestinal secretions our data suggests that it is
11 unlikely that lactate will increase iron absorption from a meal. It is perhaps surprising
12 that the fractional uptake of dialyzable iron is higher following the pancreatic digestion,
13 where pH was higher, than after the peptic digestion (Fig 4). As more iron is soluble at
14 the lower pH and as iron enters the cells across the apical membrane via DMT1, which
15 is a proton-coupled process and depends on the cell membrane potential,³⁴ it would be
16 predicted that iron absorption from the peptic digests, with the lower pH, would be
17 greater. The fact that it does not suggests that either the lower pH of the peptic digests
18 makes the Caco-2 cells less efficient, or perhaps more likely the pancreatic digestion
19 removes dialyzable, but inhibitory factors, from the food matrix, such as iron-peptide
20 complexes, and thereby increase iron uptake.

21

22 This initial study using the 3-tier Caco-2 cell model demonstrated that this system is
23 promising in studying iron uptake and transport from complex food matrices
24 undergoing digestion *in vitro*. The presence of lactate affected the amount of iron
25 dialyzed more than the transport, and thus highlights the importance of the dialysis

1 membrane in the system. It is probable that limiting export of iron from the cells in a
2 monolayer grown on the plastic base of the well would inhibit uptake, as a response to
3 increased intracellular iron,³⁵ and therefore also to the relation between dialyzed iron
4 and iron uptake. We therefore included the monolayer step in our model, but our PEG
5 data suggest the continuity of the ‘epithelium’ may have been compromised. To allow
6 for this in future, and to maximise the value of the system, kinetic transport studies of a
7 marker of passive transport, such as mannitol, should be made during the incubation
8 period so that permeability of the monolayer can be accounted for in the transport
9 measurements. The main purpose of the 3-tier model is to be able to measure iron
10 absorption from foods in a system in which the mucosal “setting” of the epithelial layer,
11 reflecting the iron status of individuals, is the main determinate of iron transport,
12 independent of the form of iron in the food. It still remains to be investigated how
13 serosal factors affect the transepithelial transport in the 3-tier system, i.e. the plasma
14 protein transferrin as an acceptor of iron³⁶ or hepcidin as a regulator of iron transport.

15

16 In conclusion, the 3-tier system described in this paper has the potential to obtain
17 detailed insight into each step involved in mineral transport across the intestinal
18 epithelium from food mixtures, thus providing a useful tool for designing foods with
19 maximal bioavailability.

20

21

ACKNOWLEDGEMENT

22 The authors wish to thank Jenny Gee for helpful advice on the scintillation counting.
23 The research was funded by The Ministry of Science, Technology, and Innovation,
24 Denmark, Vinnova, Sweden, and the Marie Curie Fellowship, The European Union.

REFERENCES

1. Miret S, Simpson RJ and McKie AT, Physiology and molecular biology of dietary iron absorption. *Annu Rev Nutr* **23**:283-301 (2003).
2. Au AP and Reddy MB, Caco-2 cells can be used to assess human iron bioavailability from a semipurified meal. *J Nutr* **130**:1329-1334 (2000).
3. Garcia MN, Flowers C and Cook JD, The Caco-2 cell culture system can be used as a model to study food iron availability. *J Nutr* **126**:251-258 (1996).
4. Glahn RP, Wien EM, Van Campen DR and Miller DD, Caco-2 cell iron uptake from meat and casein digests parallels in vivo studies: Use of a novel in vitro method for rapid estimation of iron bioavailability. *J Nutr* **126**:332-339 (1996).
5. Gavin MW, McCarthy DM and Garry PJ, Evidence that iron stores regulate iron absorption - a setpoint theory. *Am J Clin Nutr* **59**:1376-1380 (1994).
6. Alvarez-Hernandez X, Smith M and Glass J, Regulation of iron uptake and transport by transferrin in Caco-2 cells, an intestinal cell line. *Biochim Biophys Acta* **1192**:215-222 (1994).
7. Leong WI and Lonnerdal B, Hepcidin, the recently identified peptide that appears to regulate iron absorption. *J Nutr* **134**:1-4 (2004).
8. Sandberg AS, Brune M, Carlsson NG, Hallberg L, Skoglund E and Rossander-Hulthen L, Inositol phosphates with different numbers of phosphate groups influence iron absorption in humans. *Am J Clin Nutr* **70**:240-246 (1999).
9. Brune M, Rossander L and Hallberg L, Iron absorption and phenolic compounds: importance of different phenolic structures. *Eur J Clin Nutr* **43**:547-557 (1989).
10. Brune M, Rossander-Hultén L, Hallberg L, Glerup A and Sandberg A-S, Iron absorption from bread in humans: inhibiting effects of cereal fiber, phytate and

- 1 inositol phosphates with different numbers of phosphate groups. *J Nutr* **122**:442-
2 449 (1992).
- 3 11. Hallberg L and Rossander L, Absorption of iron from western-type lunch and dinner
4 meals. *Am J Clin Nutr* **35**:502-509 (1982).
- 5 12. Derman DP, Bothwell TH, Torrance JD, Bezwoda WR, Macphail AP, Kew MC,
6 Sayers MH, Disler PB and Charlton RW, Iron absorption from maize (*Zea mays*)
7 and sorghum (*Sorghum vulgare*) beer. *Brit J Nutr* **43**:271-279 (1980).
- 8 13. Gillooly M, Bothwell TH, Torrance JD, Macphail AP, Derman DP, Bezwoda WR,
9 Mills W, Charlton RW and Mayet F, The effects of organic acids, phytates and
10 polyphenols on the absorption of iron from vegetables. *Brit J Nutr* **49**:331-342
11 (1983).
- 12 14. Liljeberg H and Bjorck I, Delayed gastric emptying rate may explain improved
13 glycaemia in healthy subjects to a starchy meal with added vinegar. *Eur J Clin Nutr*
14 **52**:368-371 (1998).
- 15 15. Salovaara S, Larsson AM, Eklund-Jonsson C, Andlid T and Sandberg AS, Prolonged
16 transit time through the stomach and small intestine improves iron dialyzability and
17 uptake in vitro. *J Agric Food Chem* **51**:5131-5136 (2003).
- 18 16. Ganzle MG, Ehmann M and Hammes WP, Modeling of growth of *Lactobacillus*
19 *sanfranciscensis* and *Candida milleri* in response to process parameters of
20 sourdough fermentation. *Appl Environ Microbiol* **64**:2616-2623 (1998).
- 21 17. van Dijk C, Ebbenhorst-Selles T, Ruisch H, Stolle-Smits T, Schijvens E, van Deelen
22 W and Boeriu C, Product and redox potential analysis of sauerkraut fermentation. *J*
23 *Agric Food Chem* **48**:132-139 (2000).

- 1 18. Glahn RP, Wortley GM, South PK and Miller DD, Inhibition of iron uptake by phytic
2 acid, tannic acid, and ZnCl₂: studies using an in vitro digestion/Caco-2 cell model.
3 *J Agric Food Chem* **50**:390-395 (2002).
- 4 19. Beard JL and Dawson HD, Iron, in *Handbook of Nutritionally Essential Mineral*
5 *Elements*, Ed by O'Dell BL and Sunde RA, New York, pp 275-334 (1997).
- 6 20. Ovesen L, Bendtsen F, Tage-Jensen U, Pedersen NT, Gram BR and Rune SJ,
7 Intraluminal pH in the stomach, duodenum, and proximal jejunum in normal
8 subjects and patients with exocrine pancreatic insufficiency. *Gastroenterol* **90**:958-
9 962 (1986).
- 10 21. Glahn RP, Lee OA, Yeung A, Goldman MI and Miller DD, Caco-2 cell ferritin
11 formation predicts nonradiolabeled food iron availability in an in vitro
12 digestion/Caco-2 cell culture model. *J Nutr* **128**:1555-1561 (1998).
- 13 22. Kapsokefalou M and Miller DD, Effects of meat and selected food components on the
14 valence of nonheme iron during in vitro digestion. *J Food Sci* **56**:352-355 (1991).
- 15 23. Skoglund E, Carlsson N-G and Sandberg A-S, Determination of isomers of inositol
16 mono- to hexaphosphates in selected foods and intestinal contents using high-
17 performance ion chromatography. *J Agric Food Chem* **45**:431-436 (1997).
- 18 24. Canonne-Hergaux F, Gruenheid S, Ponka P and Gros P, Cellular and subcellular
19 localization of the Nramp2 iron transporter in the intestinal brush border and
20 regulation by dietary iron. *Blood* **93**:4406-4417 (1999).
- 21 25. Miller DD, Schricker BR, Rasmussen RR and Van Campen D, An in vitro method for
22 estimation of iron availability from meals. *Am J Clin Nutr* **34**:2248-2256 (1981).
- 23 26. Hazell T and Johnson IT, Effects of food processing and fruit juices on in vitro
24 estimated iron availability from cereals, vegetables and fruits. *J Sci Food Agric*
25 **38**:73-82 (1987).

- 1 27. Salovaara S, Sandberg AS and Andlid T, Combined impact of pH and organic acids
2 on iron uptake by Caco-2 cells. *J Agric Food Chem* **51**:7820-4 (2003).
- 3 28. Gangloff MB, Lai C, Van Campen DR, Miller DD, Norvell WA and Glahn RP,
4 Ferrous iron uptake but not transfer is down-regulated in Caco-2 cells grown in
5 high iron serum-free medium. *J Nutr* **126**:3118-3127 (1996).
- 6 29. Halleux C and Schneider YJ, Iron absorption by Caco-2 cells cultivated in serum-free
7 medium as in vitro model of the human intestinal epithelial barrier. *J Cell Physiol*
8 **158**:17-28 (1994).
- 9 30. Puyfoulhoux G, Rouanet JM, Besancon P, Baroux B, Baccou JC and Caporiccio B,
10 Iron availability from iron-fortified spirulina by an in vitro digestion/Caco-2 cell
11 culture model. *J Agric Food Chem* **49**:1625-1629 (2001).
- 12 31. Salovaara S, Sandberg AS and Andlid T, Organic acids influence iron uptake in the
13 human epithelial cell line Caco-2. *J Agric Food Chem* **50**:6233-6238 (2002).
- 14 32. Bergqvist SW, Sandberg AS, Andlid T and Wessling-Resnick M, Lactic acid
15 decreases Fe(II) and Fe(III) retention but increases Fe(III) transepithelial transfer
16 by Caco-2 cells. *J Agric Food Chem* **53**:6919-6923 (2005).
- 17 33. Bergqvist SW, Sandberg AS, Carlsson NG and Andlid T, Improved iron solubility in
18 carrot juice fermented by homo- and hetero-fermentative lactic acid bacteria. *Food*
19 *Microbiology* **22**:53-61 (2005).
- 20 34. Gunshin H, Mackenzie B, Berger UV, Gunshin Y, Romero MF, Boron WF,
21 Nussberger S, Gollan JL and Hediger MA, Cloning and characterization of a
22 mammalian proton-coupled metal-ion transporter. *Nature* **388**:482-488 (1997).
- 23 35. Sharp P, Tandy S, Yamaji S, Tennant J, Williams M and Srai SKS, Rapid regulation
24 of divalent metal transporter (DMT1) protein but not mRNA expression by non-
25 haem iron in human intestinal Caco-2 cells. *Febs Lett* **510**:71-76 (2002).

1 36. Alvarez-Hernandez X, Smith M and Glass J, The effect of apotransferrin on iron
2 release from Caco-2 cells, an intestinal epithelial cell line. *Blood* **91**:3974-3979
3 (1998).

4

5

6

FIGURE LEGENDS

1
2
3
4
5
6
7
8
9
10
11
12
13
14
15
16
17
18
19
20
21
22
23
24
25

Figure 1 Diagram of the experimental model. The model includes *in vitro* digestion with either pepsin or pepsin and pancreatin-bile (directly in the digest compartment) followed by uptake and transport studies in the 3-tier Caco-2 cell system. The system consists of 4 compartments, i.e. the digest (the compartment above the dialysis membrane), dialyzable digest (apical compartment below the dialysis membrane), cell monolayer and basolateral compartment. ^{55}Fe is used as a marker of iron uptake and transport and ^{14}C -PEG as a non-absorbable marker of monolayer tightness.

Figure 2 Iron dialysate concentration following a 2 h incubation of a rye bread digest in the presence of increasing amounts of lactate from 0–200 mmol L⁻¹ initial concentration, and the percentage of the total amount of iron dialyzed (sum of iron in the apical, cell, and basolateral compartment) relative to the total iron in the 3-tier system (sum of iron in the digest, apical, cell, and basolateral compartment). Dialyzable iron was measured following both pepsin digestion alone and pepsin plus pancreatin-bile digestion. Values are means \pm SEM, $n = 4$. Means with no letters in common are significantly different, $P < 0.05$. For the lines without letters there is no differences in means.

Figure 3 Iron uptake in 2 h from pepsin and pepsin plus pancreatin-bile digested rye bread with increasing amounts of lactate (0–200 mmol L⁻¹ initial concentration) in the 3-tier system. Values are means \pm SEM, $n = 4$. Means with no letters in common are significantly different, $P < 0.05$. For the line without letters there is no differences in means.

Figure 4 The total iron uptake (sum of uptake and transcellular transport) relative to the amount of dialyzable iron in the 3-tier system following a 2 h incubation of pepsin and pepsin plus pancreatin-bile digested rye bread in the presence of increasing amounts of lactate from 0–200 mmol L⁻¹ initial concentration. Transcellular transport is not included for the pancreatic digests, but the total transport was only 53 pmol iron mg protein⁻¹ and not affected by the

- 1 lactate concentration. The correlations of iron absorption with dialyzable iron was $R^2 = 0.41$
- 2 and $R^2 = 0.48$, for the peptic and pancreatic digests respectively, $P < 0.01$. Values are means \pm
- 3 SEM, $n = 4$.

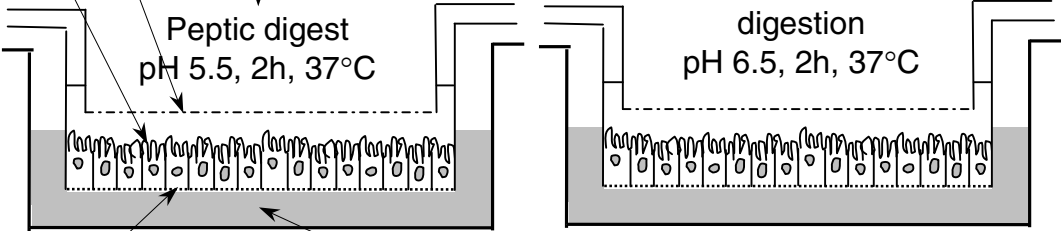
Rye bread with ^{55}Fe and ^{14}C -PEG



Pepsin digestion
pH 2, 1h, 37°C

Dialysis membrane

Caco-2 cells



Transwell membrane

Basolateral compartment

