



Københavns Universitet

Fusarium graminearum and its interactions with cereal heads

Yang, Fen; Jacobsen, Susanne; Jørgensen, Hans Jørgen Lyngs; Collinge, David B.; Svensson, Birte; Finnie, Christine Susan

Published in:
Frontiers in Plant Science

DOI:
[10.3389/fpls.2013.00037](https://doi.org/10.3389/fpls.2013.00037)

Publication date:
2013

Document Version
Publisher's PDF, also known as Version of record

Citation for published version (APA):
Yang, F., Jacobsen, S., Jørgensen, H. J. L., Collinge, D. B., Svensson, B., & Finnie, C. S. (2013). Fusarium graminearum and its interactions with cereal heads: studies in the proteomics era. *Frontiers in Plant Science*, 4(37). <https://doi.org/10.3389/fpls.2013.00037>



Fusarium graminearum and its interactions with cereal heads: studies in the proteomics era

Fen Yang^{1,2*}, Susanne Jacobsen², Hans J. L. Jørgensen¹, David B. Collinge¹, Birte Svensson² and Christine Finnie²

¹ Enzyme and Protein Chemistry, Department of Systems Biology, Technical University of Denmark, Lyngby, Denmark

² Department of Plant and Environmental Sciences, Faculty of Science, University of Copenhagen, Frederiksberg C, Denmark

Edited by:

Setsuko Komatsu, National Institute of Crop Science, Japan

Reviewed by:

Jesus V. Jorin Novo, University of Cordoba, Spain

Takumi Nishiuchi, Kanazawa University, Japan

*Correspondence:

Fen Yang, Department of Plant and Environmental Sciences, Faculty of Science, University of Copenhagen, Thorvaldsensvej 40, 1871 Frederiksberg C, Denmark.
e-mail: yangf@life.ku.dk

The ascomycete fungal pathogen *Fusarium graminearum* (teleomorph stage: *Gibberella zeae*) is the causal agent of *Fusarium* head blight in wheat and barley. This disease leads to significant losses of crop yield, and especially quality through the contamination by diverse fungal mycotoxins, which constitute a significant threat to the health of humans and animals. In recent years, high-throughput proteomics, aiming at identifying a broad spectrum of proteins with a potential role in the pathogenicity and host resistance, has become a very useful tool in plant-fungus interaction research. In this review, we describe the progress in proteomics applications toward a better understanding of *F. graminearum* pathogenesis, virulence, and host defense mechanisms. The contribution of proteomics to the development of crop protection strategies against this pathogen is also discussed briefly.

Keywords: *Fusarium graminearum*, *Fusarium* head blight, pathogenicity, plant defense response, proteomics

INTRODUCTION

The pathogen *Fusarium graminearum* causes devastating head blight of small grain cereals including wheat and barley. *Fusarium* head blight (FHB), as a global problem, has great economic impact on the cereal industry due to the reduced grain yield and quality as well as to the contamination by diverse mycotoxins, including deoxynivalenol (DON) and zearalenone, which are harmful for humans and animals.

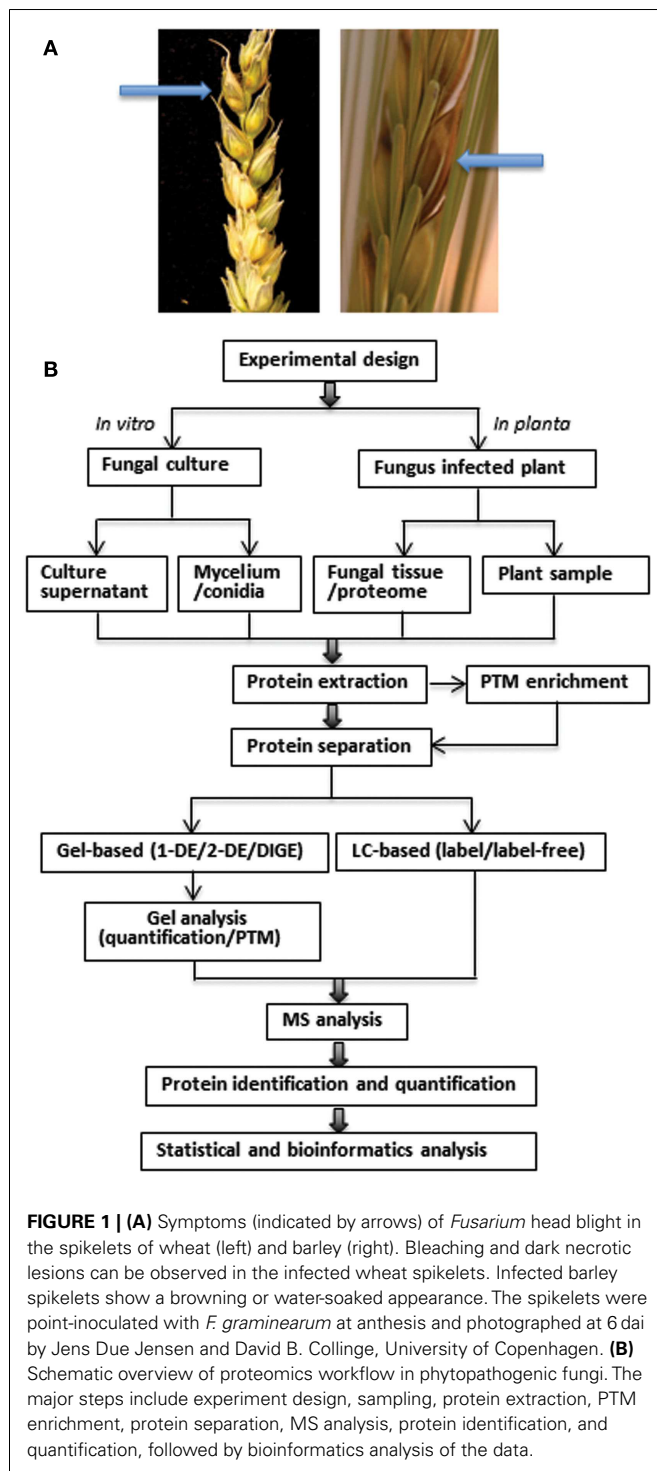
The disease (Figure 1A) is initiated by deposition of spores on or inside flowering spikelets (Bushnell et al., 2003). Fungal hyphae develop on the exterior surfaces of florets and glumes, rather than by direct penetration through the epidermis, prior to the colonization of anthers, stigmas, and lodicules (Bushnell et al., 2003). The fungus spreads in wheat from spikelet to spikelet through the vascular tissue in the rachis and rachilla (Trail, 2009) and this is associated with the production of DON, a virulence factor (effector molecule) causing tissue necrosis (Jansen et al., 2005). In barley, spread of the disease is limited and virulence does not appear to be due to the presence of the toxin (Maier et al., 2006). The fungus apparently exhibits a brief biotrophic phase before switching to the necrotrophic phase, when vigor of colonization increases by the fungus and eventually the plant cells die (Trail, 2009).

As a result of its devastating effects, *F. graminearum* has been under intense investigation for many years to understand the genetic basis of the life cycle, pathogenicity, evolution, and population biology. Availability of the full genome sequence (Ma et al., 2010) considerably revitalizes research of gene function in *F. graminearum*. In addition to classical biochemical, genetic, molecular biological, and plant pathology approaches, several “omics” techniques are employed in the studies of *F. graminearum* and its interactions with hosts. Transcriptome and metabolome analysis

have been conducted in *F. graminearum* during the invasion of hosts, sexual development, and conidial germination, in response to azole fungicide and/or in *F. graminearum* mutants as well as in barley and wheat during infection to understand defense responses (reviewed by Kazan et al., 2012). *In silico* prediction of the secretome of *F. graminearum* has also been performed to identify potential pathogenicity factors and effectors (Brown et al., 2012). Proteomics, as the core technology in functional genomics, allows interpretation of gene function, determination of protein abundance, interactions, modifications, locations, and implications in development and environmental responses (Wright et al., 2012). In the present review, we focus on the recent progress made by using proteomics techniques to enhance the understanding of cellular and molecular mechanisms of *F. graminearum* pathogenicity and virulence as well as the host defense responses.

PROTEOMICS TECHNIQUES IN PHYTOPATHOGENIC FUNGI

Proteome analysis of phytopathogenic fungi and their interactions with hosts has increased dramatically over the last years, because of the technical development of “omics” and bioinformatic tools, and the growing number of fungal genomes being sequenced. Investigations in this area mainly are (i) identification of mycelial, conidial, and secreted proteins across a range of fungal species by establishing reference proteome maps of these fungal structures. Proteome profiles are conducted and/or compared between species, races, mutants, growth, development stages, and growth conditions (Gonzalez-Fernandez et al., 2010), in particular during spore germination, hyphal penetration, appressorium formation, toxin production, and secretion (vanKan, 2006), and (ii) plant-fungus interactions to study infection cycles, to identify pathogenicity factors and to study plant defense responses.



Analysis of proteins of some fungal species *in planta* is limited due to the fact that it is difficult to isolate fungal tissues from the infected hosts and that the fungal biomass constitutes a small portion of the total biological material resulting in the dominance of plant proteins. Besides fungi with agricultural interest, such as *Botrytis cinerea*, *Sclerotinia sclerotiorum*, and *F. graminearum* (reviewed by Gonzalez-Fernandez and Jorrin-Novo, 2012),

important studies employing a diversity of proteomics techniques have been performed on major crops, including rice, maize, wheat, and barley interacting with fungal pathogens, in addition to *Arabidopsis thaliana* (reviewed by Gonzalez-Fernandez et al., 2010).

The workflow of proteomic analysis in phytopathogenic fungi is shown in **Figure 1B**. Experimental design and sampling reflect the aim of the study, i.e., whether it has focus on the fungus or the plant under the chosen conditions. The protein extraction protocol is a very critical step and determines which proteins are available for analysis. This step is particularly challenging for both plants and fungi, because of their robust cell walls in addition to proteases and different non-protein components which can interfere both with the population and quality of the proteins and their subsequent separation (Hurkman and Tanaka, 2007). Post-translational modifications (PTMs) can also be analyzed using proteomics, but require selective enrichment and purification strategies due to their reversible and labile nature and low stoichiometric abundances. Some PTMs, such as phosphorylation, glycosylation, acetylation, phenylation, S-nitrosylation, and ubiquitylation, are involved in signal transduction during plant-microbe interactions and have been analyzed by proteomics (Jayaraman et al., 2012).

Protein separation in the majority of earlier proteomics studies was based on two-dimensional gel electrophoresis (2-DE) coupled with conventional staining methods. Difference gel electrophoresis (DIGE), where samples are labeled differentially with fluorophores, allows distinction between proteins obtained in different samples that can be resolved on the same gel. This can address the issues of both sensitivity and gel variability in 2-DE (Wright et al., 2012). However, DIGE suffers from the same problems as traditional 2-DE, especially in relation to the resolution of hydrophobic proteins and proteins exhibiting extreme pIs and molecular weights. Currently, gel-free techniques for separating peptides become standard for large-scale shotgun proteomics, which can overcome some of the limitations of the gel-based approach. The methods are based on the pre-fractionation of peptide mixtures by monodimensional LC or multidimensional protein identification technology (MudPIT) such as strong cation exchange (SCX) combined with reversed phase chromatography (Gilmore and Washburn, 2010).

Mass spectrometry (MS), consisting of an ion source, a mass analyzer, and a detector, is the most common technique for unbiased protein identification (Aebersold and Mann, 2003). The various techniques for ionizing samples include matrix assisted laser desorption/ionization (MALDI) and electrospray ionization (ESI). The mass analyzers include time-of-flight (TOF), ion trap, quadrupole, orbitrap, and fourier transform ion cyclotron resonance. In MS/MS, specific precursor ions produced in the initial mass analyzer are chosen and fragmented, resulting in sequence-informative fragment ion spectra. Fragmentation methods can be collision-based (e.g., CAD and HCD) or electron-based (e.g., ECD and ETD) dissociation (Coon, 2009). Observed ion spectra are compared against databases containing known protein sequences by search algorithms (e.g., SEQUEST, Mascot, and OMSSA) for protein identification.

Comparative proteomics can be based on the traditional pre-staining of 2-DE gels such as Coomassie Blue staining, silver staining, and fluorescence staining and the modern label-free or labeling approaches at the MS stage, followed by the statistical, and bioinformatics analysis to determine the significance of data. Isotope-assisted quantification methods include *in vitro* chemical (e.g., ICAT, iTRAQ, TMT, and ^{18}O) and *in vivo* metabolic (e.g., SILAC and ^{15}N -labeling) labeling of biological samples. In chemical labeling, distinct protein samples are labeled with heavy and light isotopes or isobaric tags, pooled, and compared by MS. Stable isotope labeling of amino acids in cell culture (SILAC) or plants that are grown on media supplemented with heavy isotope-containing amino acids, allows for labeling of proteins as they are synthesized (Ong et al., 2002). The relative ratio of protein from different samples is determined by the ratios of signal intensities of the labeled peptides that are common to the samples in MS analysis. Label-free quantification compares samples based on the measurement of changes in peptide peak areas or peak heights in chromatography and peptide peak intensity in MS or the spectral counting of identified proteins after MS/MS analysis (Neilson et al., 2011).

FUSARIUM GRAMINEARUM PROTEOME ANALYSES

Proteomics studies conducted on *F. graminearum* have focused mainly on the secretome and impact of DON (Table 1). This is due to the important roles of secreted proteins and DON in pathogenicity. The first *in vitro* gel-based secretome study in *F. graminearum* was performed in a culture with a medium containing either glucose or hop cell walls. Here, 23 and 84 unique proteins were identified, respectively, mainly involved in cell wall polysaccharide degradation (Phalip et al., 2005). Using LC-MS/MS, 229 fungal proteins, mostly glycoside hydrolases and proteases, were identified in the secretome of *F. graminearum* during growth on 13 synthetic media (Paper et al., 2007). To closely mimic the nutritional situation of the fungus *in planta*, Yang et al. (2012) employed a gel-based proteomics approach to access the secretome in the growth cultures with barley or wheat flour as the sole nutrient source, resulting in the identification of 69 unique fungal proteins including enzymes involved in the degradation of cell walls, starch, and proteins. Secreted proteins differing in accumulation between wheat and barley flour media were mainly involved in fungal cell wall remodeling and the degradation of plant cell walls, starch, and proteins. To analyze the effect of DON production in host infection process, *F. graminearum* was grown on a medium promoting trichothecene biosynthesis (Taylor et al., 2008). Here, comparative proteomics showed 130 differentially expressed fungal proteins, of which proteins potentially involved in virulence were up-regulated, whereas down-regulated proteins were primary metabolic enzymes, chaperones, and proteins involved in translation.

Two phosphoproteome studies of *F. graminearum* under nitrogen limiting conditions and under conditions of unlimited nutrients have been published recently (Rampitsch et al., 2010, 2012). It was suggested that phosphorylation events are involved in the signaling pathways, leading to the activation of the trichothecene pathway, which is also activated in *F. graminearum* under nutrient stress (Rampitsch et al., 2010). A total of 348 phosphorylation

sites localized to 301 peptides from 241 proteins including 10 protein kinases and seven transcription factors were identified during nitrogen starvation. When *F. graminearum* was grown *in vitro* without nutritional limitation, 2902 putative phosphopeptides with homologous matches to 1496 different proteins were identified (Rampitsch et al., 2012). Here, the majority of phosphoproteins were nuclear proteins with ATP-binding function and the phosphorylation sites were conserved in three phosphopeptides from transcription elongation factor 1 β , acidic ribosomal proteins, and glycogen synthase.

Although it is very challenging to identify large numbers of *F. graminearum* proteins *in planta*, Paper et al. (2007) extracted *F. graminearum* secreted proteins from infected wheat heads by vacuum filtration, resulting in the identification of 120 fungal proteins including several cell wall degrading enzymes, of which 56% contained putative secretion signals. Additionally, proteomics analyses of *F. graminearum*-infected barley spikelets at maturity (Yang et al., 2010a) and 2 days after inoculation (dai; Yang et al., 2010b) as well as wheat spikelets from 1 to 3 dai (Zhou et al., 2006), revealed nine, one, and eight fungal proteins, respectively. The identification of fungal stress-related and antioxidant proteins *in planta* strongly suggests that the pathogen is exposed to stresses such as oxidation and starvation and that it attempts to overcome plant defense.

PROTEOMICS STUDIES OF HOST DEFENSE TO FUSARIUM GRAMINEARUM

Extensive proteomics studies have been conducted in *F. graminearum*-infected wheat, barley, and their wild relatives (Table 1). With the exception of one recent study (Gunnaiyah et al., 2012) using shotgun proteomics, other studies have employed gel-based techniques to investigate the differentially expressed proteins of hosts with different levels of disease susceptibility at different time points after inoculation at anthesis or during germination (Table 1). Due to the use of different cultivars, inoculation methods, infection stages, growth conditions, and proteomic techniques, little overlap is apparent between the regulated proteins identified in these studies. In resistant and/or susceptible wheat in response to *F. graminearum* up to 5 dai, many proteins related to carbon metabolism and photosynthesis were down-regulated, whereas the up-regulated proteins could be involved in antioxidant, jasmonic acid, and ethylene signaling pathways, phenylpropanoid biosynthesis, antimicrobial compound synthesis, detoxification, cell wall fortification, defense-related responses, amino acid synthesis, and nitrogen metabolism. Wheat susceptibility likely reflected the delayed activation of the salicylic acid defense pathway (Ding et al., 2011). Moreover, distinct abundance patterns of different xylanase inhibitor forms and pathogenesis-related (PR) proteins were shown in the wheat ear in response to the *F. graminearum* ΔTri5 mutant at 5, 15, and 25 dai (Dornez et al., 2010).

When the proteomes of mature grains of susceptible barley infected by *F. graminearum* under two different levels of nitrogen fertilizers were analyzed, massive, fungus-induced degradation of the grain proteome was observed and increased *Fusarium* infection occurred with low N amount (Yang et al., 2010a). In contrast, Zantinge et al. (2010) observed no degradation of seed proteomes

Table 1 | Original proteomics papers published on *F. graminearum* and its interactions with wheat and barley.

Growth conditions	Sampling times	Sample materials	Proteomics techniques	Remarks	Reference
In the growth media containing either glucose or hop cell walls	6 d, 9 d	Culture supernatants	1-DE, 2-DE, LC-MS/MS	Analysis of the fungal <i>in vitro</i> secretomes	Philip et al. (2005)
In the synthetic media containing polysaccharide supplements	7 d	Culture supernatants	1-DE, LC-MS/MS	High-throughput analysis of the fungal <i>in vitro</i> secretomes	Paper et al. (2007)
In the wheat grains	Maturity	Fungal secretome	1-DE, LC-MS/MS	Analysis of the fungal <i>in planta</i> secretomes	Paper et al. (2007)
In the growth medium promoting trichothecene biosynthesis after 2-day growth in the rich medium	0, 4 d, 9 d, 12 d	Fungal tissues	iTRAQ, LC-MS/MS 2-DE, MS/MS	<i>In vitro</i> time course study of the changes in fungal intercellular proteomes due to the induction of trichothecene production	Taylor et al. (2008)
In the growth media containing only barley or wheat flour	7 d	Culture supernatants	2-DE, MALDI-MS/MS	Study of the fungal <i>in vitro</i> secretomes under growth conditions which mimic <i>in planta</i> nutritional situation	Yang et al. (2012)
In the growth medium with limited nitrogen after 2-day growth in the rich medium	0, 6 h, 12 h	Fungal tissues	2-DE, MALDI-MS, 1-DE, IMAC, TiO ₂ , LC-MS, SAX, IMAC, LC-MS/MS	Analysis of the fungal phosphoproteomes under the <i>in vitro</i> growth condition that activates trichothecene pathway	Rampitsch et al. (2010)
In the growth medium with unlimited nutrients	1 d	Fungal tissues	SCX, IMAC, LC-MS/MS	Analysis of the fungal <i>in vitro</i> phosphoproteomes	Rampitsch et al. (2012)
Virus-free and -infected strains grown in the complete medium	5 d	Fungal tissues	2-DE, LC-MS/MS	Study of the fungal proteomes in response to viral infection	Kwon et al. (2009)
In the resistant wheat spikes	6 h, 12 h, 24 h	Wheat spikes	2-DE, MALDI MS	Study of the differential expressed wheat proteins in response to fungal infection	Wang et al. (2005)
In the susceptible and resistant wheat spikes	5 d	Wheat spikelets	2-DE, LC-MS/MS	Study of the differential expressed wheat proteins in response to fungal infection	Zhou et al. (2005)
In the susceptible wheat spikes	1 d, 2 d, 3 d	Wheat spikelets	2-DE, LC-MS/MS	Identification of wheat proteins regulated by the fungus and fungal expressed proteins <i>in planta</i>	Zhou et al. (2006)
In the susceptible wheat ears	5 d, 15 d, 25 d	Wheat ears	DIGE, MALDI MS/MS	Investigation of the changes in xylanase inhibitors (isoforms of wheat due to fungal <i>Tir5</i> mutant infection	Dornez et al. (2010)
In the susceptible and resistant wheat spikes	12 h	Wheat spikes	2-DE, MALDI MS	Study of the differential expressed wheat proteins and genes in response to fungal infection	Ding et al. (2011)
In the moderate resistant wheat spikes	48 h	Wheat spikes	2-DE, MALDI MS	Study of the differential expressed wheat proteins in response to fungal infection	Shin et al. (2011)

(Continued)

Table 1 | Continued

Growth conditions	Sampling times	Sample materials	Proteomics techniques	Remarks	Reference
In wheat carrying either resistant or susceptible alleles at the <i>Fhb 1</i> locus	72 h	Wheat spikelets	LC-MS/MS, spectral counting	Identification of mechanisms of resistance governed by the FHB resistance locus <i>Fhb 1</i>	Gunnaiah et al. (2012)
In emmer heads and co-colonization with <i>Fusarium culmorum</i>	Maturity	Emmer grains	2-DE, LC-MS/MS	Study of the differential expressed emmer seed proteins in response to fungal infection	Eggert et al. (2011)
In the spikes of six barley genotypes of varying resistance	3 d	Barley spikelets	2-DE, LC-MS/MS	Study of the differential expressed barley proteins in response to fungal infection	Geddes et al. (2008)
In the susceptible barley spikes grown under different N fertilizers	Maturity	Barley seeds	2-DE, MALDI MS/MS	Investigation of effect of nitrogen fertilizer mounts on the severity of FHB and identification of fungal proteins in <i>planta</i>	Yang et al. (2010a)
In the susceptible barley spikes	2 d	Barley spikelets	2-DE, MALDI MS/MS	Definition of infection levels correlated to fungal induced plant proteome degradation and identification of the differential expressed barley proteins in response to fungal infection	Yang et al. (2010b)
In the susceptible barley seeds	3 d	Germinating barley seeds	2-DE, MALDI MS/MS	Study of the differential expressed barley seed proteins in response to fungal infection during germination	Yang et al. (2011)
In the spikes of eleven barley genotypes of varying resistance	Maturity	Barley seeds	2-DE, LC-MS/MS	Study of the differential expressed barley seed proteins in response to fungal infection	Zantinge et al. (2010)
In the naked barley heads and co-colonization with <i>Fusarium culmorum</i>	Maturity	Naked barley grains	2-DE, MALDI MS, LC-MS/MS	Identification of the differentially expressed seed proteins in response to fungal infection and to growing location of the plant	Eggert and Pawelzik (2011)

of barley cultivars with different susceptibility to *F. graminearum*. These findings led to the analysis of the compatible interaction between barley and *F. graminearum* during the early infection stage to clearly define the infection levels correlated to the degree of fungal induced proteome degradation. Analysis of infected susceptible barley spikelets at 2 dai (Yang et al., 2010b) and 3 dai (Geddes et al., 2008) revealed up-regulation of proteins associated with oxidative stress response, PR-proteins and increased energy metabolism, although slight proteome degradation was observed at 2 dai (Yang et al., 2010b). However, changes in proteins associated with an oxidative response could not be observed in resistant barley (Geddes et al., 2008), suggesting enhanced oxidative stress in the compatible interaction. Moreover, investigation of infection of emmer wheat and naked barley mature grains by both *F. graminearum* and *F. culmorum* showed DON accumulation and several changed proteins involved in transcription regulation, defense responses, nutrient reservoirs, and starch biosynthesis in contrast to proteome degradation (Eggert and Pawelzik, 2011; Eggert et al., 2011). These results indicate that wild relatives can stimulate defense strategies in response to *Fusarium* infection after a long infection period up to the maturity stage.

CONTRIBUTION OF PROTEOMICS TO CROP PROTECTION AGAINST FHB

In order to reduce epidemics of FHB, several approaches for control can be employed, including the use of cultural control techniques (e.g., crop rotations, irrigation, weed control, nitrogen input, and tilling), the use of fungicides, chemicals and biological control, transgenic plants, and resistance breeding (Parry et al., 1995). The major contribution of proteomics to crop protection is the identification of both fungal effectors possibly facilitating infection or triggering plant defense and host proteins or biomarkers possibly conferring enhanced resistance, which require subsequent functional analysis of corresponding genes to establish new strategies for disease control. So far, several *F. graminearum* genes relative to mycotoxin production, signal transduction, metabolism, and growth have been analyzed in detail to examine their roles in the virulence and pathogenicity (reviewed by Kazan et al., 2012), but the targets discovered on the basis of the outcomes of proteomics, which may be essential for fungal infection, have not been well investigated.

With respect to host resistance, proteomics has identified many host proteins in response to *F. graminearum*, the majority of which are often involved in primary metabolism, defense, and stress-related responses. However, the most frequently identified host proteins have not been fully investigated, except the PR-proteins (e.g., chitinase, β -1,3-glucanase and thaumatin-like protein), in terms of downstream characterization of their functional roles in enhanced resistance. The reasons can be that some proteins of interest are actually not found by proteomics due to low abundance or condition-dependent expression and that high-throughput stable transformation of wheat and barley for functional analysis of host genes is still not available. Furthermore, there has been a lack of wheat and barley genome sequences, although barley genome has recently been published (The International Barley Genome Sequencing Consortium, 2012), which should assist the

process of identifying elements relating to resistance. Transgenic wheat expressing a α -1-purothionin, a thaumatin-like protein 1, a β -1,3-glucanase (MacKintosh et al., 2007), a class II chitinase (Shin et al., 2008), an antifungal plant defensin (Li et al., 2011), a pectin methyl-esterase inhibitor (Volpi et al., 2011), a polygalacturonase-inhibiting protein (Ferrari et al., 2012), a lactoferrin (Han et al., 2012), a *Arabidopsis thaliana* NPR1 (Makandar et al., 2006), or a truncated form of the yeast ribosomal protein L3 (Di et al., 2010) enhanced resistance to FHB under greenhouse conditions. However, transgenic lines have rarely been tested for FHB severity under field conditions. Among tested lines, a β -1,3-glucanase and a L3 transgenic wheat line conferred enhanced resistance in addition to reduced DON level in the L3 line. Transgenic barley expressing a FsTri101, a PDR5, a chitinase, or a thaumatin-like protein showed that neither of these genes was effective in the field at reducing FHB or DON levels, whereas two transgenic lines expressing another thaumatin-like protein or a trichothecene transporter, have shown reduced DON accumulation during 5 years of field trials (Dahleen et al., 2011). FHB resistance breeding is another approach, where mapping of QTLs controlling resistance to *F. graminearum* is a major task. Resistance-associated host metabolite-based breeding selection has also been suggested, when reliable associations between these metabolites as biomarkers and host resistance can be established (Bollina et al., 2011). The same principle can be applied to genes and proteins. Large-scaled “omics” studies of host-*F. graminearum* interactions offer such opportunity to identify potential biomarkers.

PERSPECTIVES

Proteomics has become an indispensable tool for understanding molecular and cellular mechanisms in plant-microbe interactions. With the aid of the remarkable development of proteomics techniques, host genome sequencing and bioinformatics tools, the capability of proteomics to identify the novel elements involved in *F. graminearum* pathogenicity and virulence and host resistance will continue to improve. However, the full characterization of a proteome is extremely challenging due to proteome dynamics and complexity. The high cost and complexity of experimental procedures also limit the utilization of proteomics. Furthermore, functional analysis of identified proteins or genes is required to elucidate their roles in pathogenicity and plant resistance. Although significant progress has been made in understanding FHB, environmental changes, and evolution of virulence and toxin biosynthesis in *F. graminearum* are highly challenging for disease control. Therefore, it will be essential to integrate all the information generated from the “omics” studies together with plant pathology and genetic engineering to fully understand host *F. graminearum* interactions for development of sustainable cereal protection strategies.

ACKNOWLEDGMENTS

The work was funded by the Directorate for Food, Fisheries, and Agri Business grant, Plant Biotech Denmark, the Centre for Advanced Food Studies, and Technical University of Denmark.

REFERENCES

- Aebersold, R., and Mann, M. (2003). Mass spectrometry-based proteomics. *Nature* 422, 198–207.
- Bollina, V., Kushalappa, A. C., Choo, T. M., Dion, Y., and Rioux, S. (2011). Identification of metabolites related to mechanisms of resistance in barley against *Fusarium graminearum*, based on mass spectrometry. *Plant Mol. Biol.* 77, 355–370.
- Brown, N. A., Antoniw, J., and Hammond-Kosack, K. E. (2012). The predicted secretome of the plant pathogenic fungus *Fusarium graminearum*: a refined comparative analysis. *PLoS ONE* 7:e33731. doi:10.1371/journal.pone.0033731
- Bushnell, W. R., Hazen, B. E., and Pritsch, C. (2003). “Histology and physiology of *Fusarium* head blight,” in *Fusarium Head Blight of Wheat and Barley*, eds K. J. Leonard and W. R. Bushnell (St. Paul, MN: APS Press), 44–83.
- Coon, J. J. (2009). Collisions or electrons? Protein sequence analysis in the 21st century. *Anal. Chem.* 81, 3208–3215.
- Dahleen, L. S., Brueggeman, R., Abebe, T., and Skadsen, R. (2011). “Field tests of transgenic barley lines in North Dakota,” in *Proceedings of the 2011 National Fusarium Head Blight Forum*, eds S. Canty, A. Clark, A. Anderson-Scully, D. Ellis, and D. Van Sanford (East Lansing, MI: U.S. Wheat and Barley Scab Initiative), 82.
- Di, R., Blechl, A., Dill-Macky, R., Tortora, A., and Tumer, N. E. (2010). Expression of a truncated form of yeast ribosomal protein L3 in transgenic wheat improves resistance to *Fusarium* head blight. *Plant Sci.* 178, 374–380.
- Ding, L., Xu, H., Yi, H., Yang, L., Kong, Z., Zhang, L., et al. (2011). Resistance to hemi-biotrophic *F. graminearum* infection is associated with coordinated and ordered expression of diverse defensesignaling pathways. *PLoS ONE* 6:e19008. doi:10.1371/journal.pone.0019008
- Dornez, E., Croes, E., Gebruers, K., Carpentier, S., Swennen, R., Laukens, K., et al. (2010). 2-D DIGE reveals changes in wheat xylanase inhibitor protein families due to *Fusarium graminearum* δ Tri5 infection and grain development. *Proteomics* 10, 2303–2319.
- Eggert, K., and Pawelzik, E. (2011). Proteome analysis of *Fusarium* head blight in grains of naked barley (*Hordeum vulgare* subsp. nudum). *Proteomics* 11, 972–985.
- Eggert, K., Zörb, C., Mühlhling, K. H., and Pawelzik, E. (2011). Proteome analysis of *Fusarium* infection in emmer grains (*Triticum dicoccum*). *Plant Pathol.* 60, 918–928.
- Ferrari, S., Sella, L., Janni, M., De Lorenzo, G., Favaron, F., and D’Ovidio, R. (2012). Transgenic expression of polygalacturonase-inhibiting proteins in *Arabidopsis* and wheat increases resistance to the flower pathogen *Fusarium graminearum*. *Plant Biol.* 14, S31–S38.
- Geddes, J., Eudes, F., Laroche, A., and Selinger, L. B. (2008). Differential expression of proteins in response to the interaction between the pathogen *Fusarium graminearum* and its host, *Hordeum vulgare*. *Proteomics* 8, 545–554.
- Gilmore, J. M., and Washburn, M. P. (2010). Advances in shotgun proteomics and the analysis of membrane proteomes. *J. Proteomics* 73, 2078–2091.
- Gonzalez-Fernandez, R., and Jorriñovo, J. V. (2012). Contribution of proteomics to the study of plant pathogenic fungi. *J. Proteome Res.* 11, 3–16.
- Gonzalez-Fernandez, R., Prats, P., and Jorriñovo, J. V. (2010). Proteomics of plant pathogenic fungi. *J. Biomed. Biotechnol.* 2010, 932527.
- Gunnaiyah, R., Kushalappa, A. C., Duggavathi, R., Fox, S., and Somers, D. J. (2012). Integrated metabolite-proteomic approach to decipher the mechanisms by which wheat QTL (Fhb1) contributes to resistance against *Fusarium graminearum*. *PLoS ONE* 7:e40695. doi:10.1371/journal.pone.0040695
- Han, J., Lakshman, D. K., Galvez, L. C., Mitra, S., Baenziger, P. S., and Mitra, A. (2012). Transgenic expression of lactoferrin imparts enhanced resistance to head blight of wheat caused by *Fusarium graminearum*. *BMC Plant Biol.* 12:33. doi:10.1186/1471-2229-12-33
- Hurkman, W. J., and Tanaka, C. K. (2007). “High-resolution two-dimensional gel electrophoresis: a cornerstone of plant proteomics,” in *Plant Proteomics*, eds J. Samaj and J. Thelen (Berlin: Springer Press), 14–28.
- Jansen, C., von Wettstein, D., Schäfer, W., Kogel, K. H., Felk, A., and Maier, F. J. (2005). Infection patterns in barley and wheat spikes inoculated with wild-type and trichothecene synthase gene disrupted *Fusarium graminearum*. *Proc. Natl. Acad. Sci. U.S.A.* 102, 16892–16897.
- Jayaraman, D., Forshey, K. L., Grimrud, P. A., and Ané, J. M. (2012). Leveraging proteomics to understand plant–microbe interactions. *Front. Plant Sci.* 3:44. doi:10.3389/fpls.2012.00044
- Kazan, K., Gardiner, D. M., and Manners, J. M. (2012). On the trail of a cereal killer: recent advances in *Fusarium graminearum* pathogenomics and host resistance. *Mol. Plant Pathol.* 13, 399–413.
- Kwon, S. J., Cho, S. Y., Lee, K. M., Yu, J., Son, M., and Kim, K. H. (2009). Proteomic analysis of fungal host factors differentially expressed by *Fusarium graminearum* infected with *Fusarium graminearum* virus-DK21. *Virus Res.* 144, 96–106.
- Li, Z., Zhou, M., Zhang, Z., Ren, L., Du, L., Zhang, B., et al. (2011). Expression of a radish defensin in transgenic wheat confers increased resistance to *Fusarium graminearum* and *Rhizoctonia cerealis*. *Funct. Integr. Genomics* 11, 63–70.
- Ma, L. J., van der Does, H. C., Borkovich, K. A., Coleman, J. J., Daboussi, M. J., Di Pietro, A., et al. (2010). Comparative genomics reveals mobile pathogenicity chromosomes in *Fusarium*. *Nature* 464, 367–373.
- MacKintosh, C. A., Lewis, J., Radmer, L. E., Shin, S., Heinen, S. J., Smith, L. A., et al. (2007). Overexpression of defense response genes in transgenic wheat enhances resistance to *Fusarium* head blight. *Plant Cell Rep.* 26, 479–488.
- Maier, F. J., Miedaner, T., Hadeler, B., Felk, A., Salomon, S., Lemmens, M., et al. (2006). Involvement of trichothecenes in fusarioses of wheat, barley and maize evaluated by gene disruption of the trichodiene synthase (Tri5) gene in three field isolates of different chemotype and virulence. *Mol. Plant Path.* 7, 449–461.
- Makandar, R., Essig, J. S., Schapaugh, M. A., Trick, H. N., and Shah, J. (2006). Genetically engineered resistance to *Fusarium* head blight in wheat by expression of *Arabidopsis* NPR1. *Mol. Plant Microbe Interact.* 19, 123–129.
- Neilson, K. A., Ali, N. A., Muralidharan, S., Mirzaei, M., Mariani, M., Assadourian, G., et al. (2011). Less label, more free: approaches in label-free quantitative mass spectrometry. *Proteomics* 11, 535–553.
- Ong, S. E., Blagoev, B., Kratchmarova, I., Kristensen, D. B., Steen, H., Pandey, A., et al. (2002). Stable isotope labeling by amino acids in cell culture, SILAC, as a simple and accurate approach to expression proteomics. *Mol. Cell. Proteomics* 1, 376–386.
- Paper, J. M., Scott-Craig, J. S., Adhikari, N. D., Cuomo, C. A., and Walton, J. D. (2007). Comparative proteomics of extracellular proteins in vitro and in planta from the pathogenic fungus *Fusarium graminearum*. *Proteomics* 7, 3171–3183.
- Parry, D. W., Jenkinson, P., and McLeod, L. (1995). *Fusarium* ear blight (scab) in small grain cereals: a review. *Plant Pathol.* 44, 207–238.
- Phalip, V., Delalande, F., Carapito, C., Goubet, F., Hatsch, D., Leize-Wagner, E., et al. (2005). Diversity of the exoproteome of *Fusarium graminearum* grown on plant cell wall. *Curr. Genet.* 48, 366–379.
- Rampitsch, C., Subramaniam, R., Djuric-Ciganovic, S., and Bykova, N. V. (2010). The phosphoproteome of *Fusarium graminearum* at the onset of nitrogen starvation. *Proteomics* 10, 124–140.
- Rampitsch, C., Tinker, N. A., Subramaniam, R., Barkow-Oesterreicher, S., and Laczko, E. (2012). Phosphoproteome profile of *Fusarium graminearum* grown in vitro under non-limiting conditions. *Proteomics* 12, 1002–1005.
- Shin, K. H., Kamal, A. H. M., Cho, K., Choi, J. S., Jin, Y., Paek, N. C., et al. (2011). Defense proteins are induced in wheat spikes exposed to *Fusarium graminearum*. *Plant Omics* 4, 270–277.
- Shin, S., Mackintosh, C. A., Lewis, J., Heinen, S. J., Radmer, L., Dill-Macky, R., et al. (2008). Transgenic wheat expressing a barley class II chitinase gene has enhanced resistance against *Fusarium graminearum*. *J. Exp. Bot.* 59, 2371–2378.
- Taylor, R. D., Saparno, A., Blackwell, B., Anoop, V., Gleddie, S., Tinker, N. A., et al. (2008). Proteomic analyses of *Fusarium graminearum* grown under mycotoxin-inducing conditions. *Proteomics* 8, 2256–2265.
- The International Barley Genome Sequencing Consortium. (2012). A physical, genetic and functional sequence assembly of the barley genome. *Nature* 491, 711–716.
- Trail, F. (2009). For blighted waves of grain: *Fusarium graminearum* in the postgenomics era. *Plant Physiol.* 149, 103–110.
- vanKan, J. A. L. (2006). Licensed to kill: the life style of a necrotrophic plant pathogen. *Trends Plant Sci.* 11, 247–253.
- Volpi, C., Janni, M., Lionetti, V., Bellincampi, D., Favaron, F., and D’Ovidio, R. (2011). The ectopic expression of a pectin methyl esterase inhibitor increases pectin methyl esterification and limits fungal diseases in wheat. *Mol. Plant Microbe Interact.* 24, 1012–1019.

- Wang, Y., Yang, L., Xu, H., Li, Q., Ma, Z., and Chu, C. (2005). Differential proteomic analysis of proteins in wheat spikes induced by *Fusarium graminearum*. *Proteomics* 5, 4496–4503.
- Wright, P. C., Noirel, J., Ow, S. Y., and Fazeli, A. (2012). A review of current proteomics technologies with a survey on their widespread use in reproductive biology investigations. *Theriogenology* 77, 738–765.
- Yang, F., Jensen, J. D., Spliid, N. H., Svensson, B., Jacobsen, S., Jørgensen, L. N., et al. (2010a). Investigation of the effect of nitrogen on severity of *Fusarium* head blight in barley. *J. Proteomics* 73, 743–752.
- Yang, F., Jensen, J. D., Svensson, B., Jørgensen, H. J., Collinge, D. B., and Finnie, C. (2010b). Analysis of early events in the interaction between *Fusarium graminearum* and the susceptible barley (*Hordeum vulgare*) cultivar Scarlett. *Proteomics* 10, 3748–3755.
- Yang, F., Jensen, J. D., Svensson, B., Jørgensen, H. J., Collinge, D. B., and Finnie, C. (2012). Secretomics identifies *Fusarium graminearum* proteins involved in the interaction with barley and wheat. *Mol. Plant Pathol.* 13, 445–453.
- Yang, F., Svensson, B., and Finnie, C. (2011). Response of germinating barley seeds to *Fusarium graminearum*: the first molecular insight into *Fusarium* seedling blight. *Plant Physiol. Biochem.* 49, 1362–1368.
- Zantinge, J., Kumar, K., Xi, K., Johns, M., Murray, A., Jones, T., et al. (2010). Comparison of barley seed proteomic profiles associated with *Fusarium* head blight reaction. *Can. J. Plant Pathol.* 32, 496–512.
- Zhou, W., Eudes, F., and Laroche, A. (2006). Identification of differentially regulated proteins in response to a compatible interaction between the pathogen *Fusarium graminearum* and its host, *Triticum aestivum*. *Proteomics* 6, 4599–4609.
- Zhou, W., Kolb, F. L., and Riechers, D. E. (2005). Identification of proteins induced or upregulated by *Fusarium* head blight infection in the spikes of hexaploid wheat (*Triticum aestivum*). *Genome* 48, 770–780.

Conflict of Interest Statement: The authors declare that the research was conducted in the absence of any commercial or financial relationships that could be construed as a potential conflict of interest.

Received: 30 November 2012; paper pending published: 04 January 2013; accepted: 12 February 2013; published online: 28 February 2013.

Citation: Yang F, Jacobsen S, Jørgensen HJL, Collinge DB, Svensson B and Finnie C (2013) *Fusarium graminearum* and its interactions with cereal heads: studies in the proteomics era. *Front. Plant Sci.* 4:37. doi: 10.3389/fpls.2013.00037

This article was submitted to *Frontiers in Plant Proteomics*, a specialty of *Frontiers in Plant Science*.

Copyright © 2013 Yang, Jacobsen, Jørgensen, Collinge, Svensson and Finnie. This is an open-access article distributed under the terms of the Creative Commons Attribution License, which permits use, distribution and reproduction in other forums, provided the original authors and source are credited and subject to any copyright notices concerning any third-party graphics etc.